

# BRUNTON

---

## RESIDENTIAL

T. 0191 236 8347  
E. info@bruntonresidential.com  
A. 125 St George's Terrace, NE2  
W. 2DN  
bruntonresidential.com



## Elmwood Park Court

Great Park, NE13 9BP

\*\*\* 360 VIRTUAL TOUR \*\*\* - Available 08 September 2024 - Rent £1,280pcm - 3 bed - 2 bathrooms - 2 receptions - Persimmon Dartford/Prestwick build - 3 storey Townhouse - Great Park Location. The Dartford/Prestwick build offers accommodation which briefly comprises of; Entrance hallway with access to a family kitchen with double doors to gardens, a second sitting room and a ground floor WC. The first-floor landing offers access to a full-width lounge with balcony doors, the main bedroom with ensuite shower room. Finally, the top floor offers two well-sized bedrooms along with a family bathroom WC.

**£1,280 PCM**

# 11 Elmwood Park Court

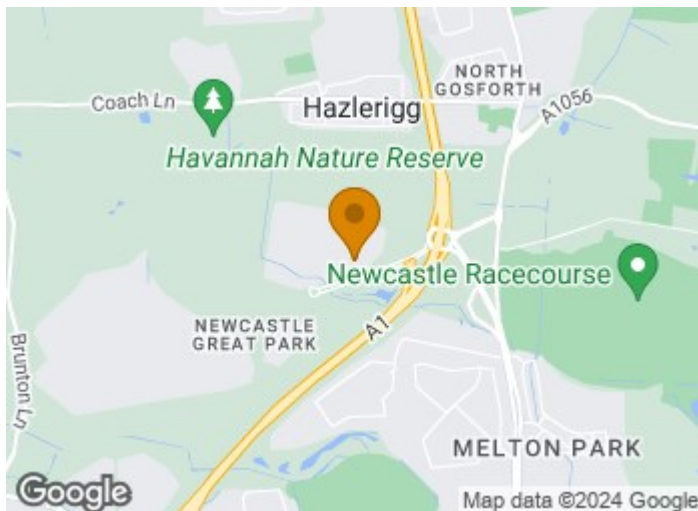
Great Park, NE13 9BP



\*\*\* 360 VIRTUAL TOUR \*\*\* - Available 08 September 2024 - Rent £1,280pcm - 3 bed - 2 bathrooms - 2 receptions - Persimmon Dartford/Prestwick build - 3 storey Townhouse - Great Park Location. Brunton Residential are delighted to offer to rent this townhouse located on the Elmwood Park section of Great Park. The Dartford/Prestwick by Persimmon offers accommodation which briefly comprises; Entrance hallway with access to a family kitchen with double doors to gardens, a second sitting room, and a ground floor WC. The first-floor landing offers access to a full-width lounge with balcony doors, the main bedroom with ensuite shower room. Finally, the top floor offers two well-sized bedrooms along with a family bathroom WC.

Externally the property has an open aspect to the front while to the rear is a paved designed garden leading to an allocated parking space.

Available on an unfurnished basis. Smoking inside the property is not permitted.

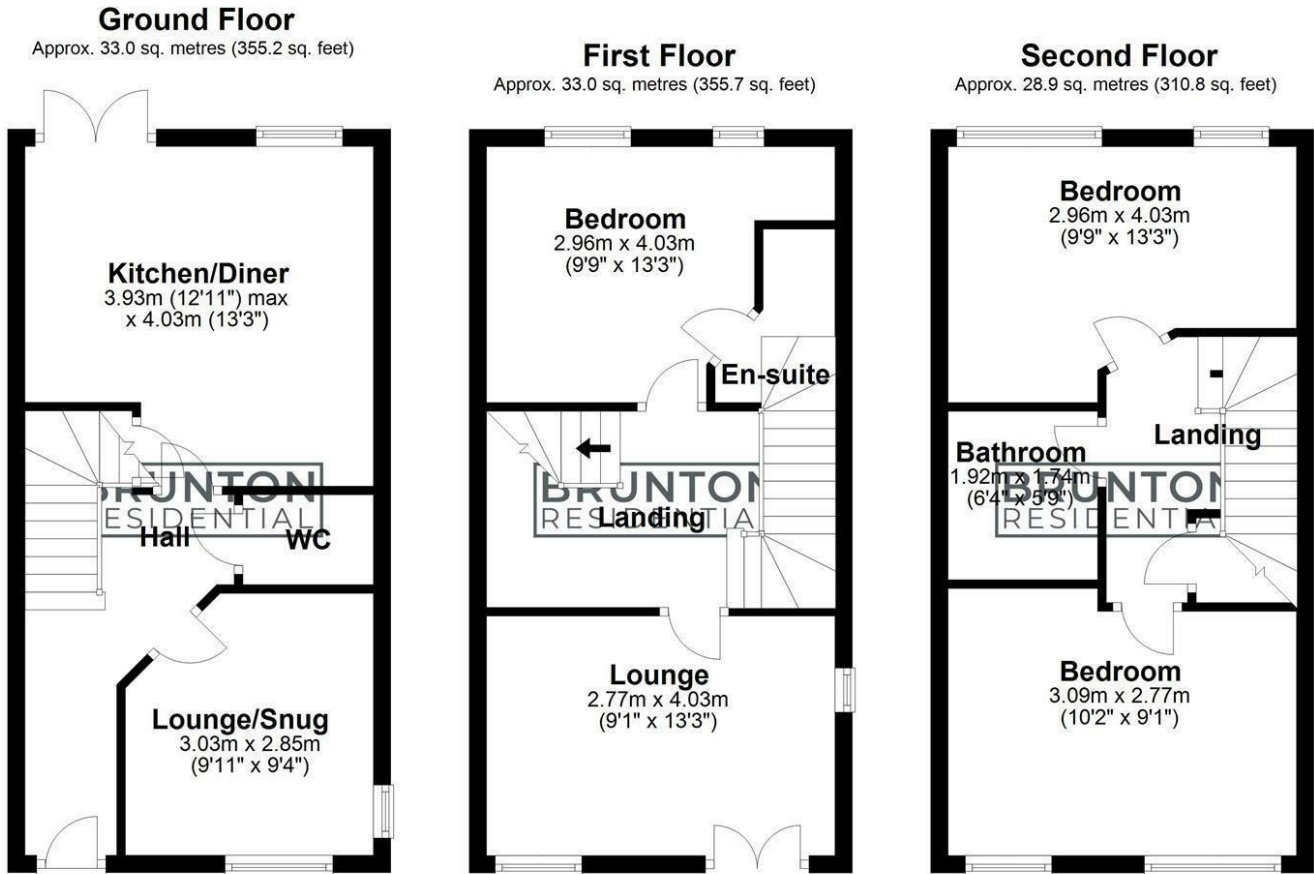


- Available 08 September 2024
- 2 reception rooms
- Rear paved design garden
- EPC rating C
- Rent £1,280pcm
- Main bedroom with ensuite
- Family bathroom with additional WC
- 3 bed 3 storey Townhouse
- Dartford/Prestwick Persimmon build
- Fitted kitchen





## Floor Plan



All measurements are approximate and are for illustration only.  
Plan produced using PlanUp.

These particulars, whilst believed to be accurate are set out as a general outline only for guidance and do not constitute any part of an offer or contract. Intending purchasers should not rely on them as statements of representation of fact, but must satisfy themselves by inspection or otherwise as to their accuracy. No person in this firm's employment has the authority to make or give any representation or warranty in respect of the property.

