

# BRUNTON

---

RESIDENTIAL



**WINDER DRIVE, HAVANNAH PARK, NEWCASTLE UPON TYNE**

**£1,000 PCM**

# BRUNTON

---

RESIDENTIAL





# BRUNTON

---

RESIDENTIAL



# BRUNTON

---

## RESIDENTIAL



EXCELLENT LOCATION - TWO BEDROOMS - FANTASTIC REAR GARDEN - OFF ROAD  
PARKING - FURNISHED PROPERTY

\*\*\*360 VIRTUAL TOUR\*\*\* - Available 19th August 24 - Rent £1000pcm - 2 bed semi-detached  
home - Suitable for professionals. Furnished home

Brunton Residential are delighted to offer this excellent semi-detached home located on Winder  
Drive in the ever-popular Havannah Park Estate. This home is in fantastic condition throughout  
and has a stunning garden area.

# BRUNTON

---

## RESIDENTIAL



# BRUNTON

---

## RESIDENTIAL

Brunton Residential are delighted to offer this excellent semi-detached Bellway home located on Winder Drive in the ever-popular Havannah Park Estate. Available on a furnished basis.

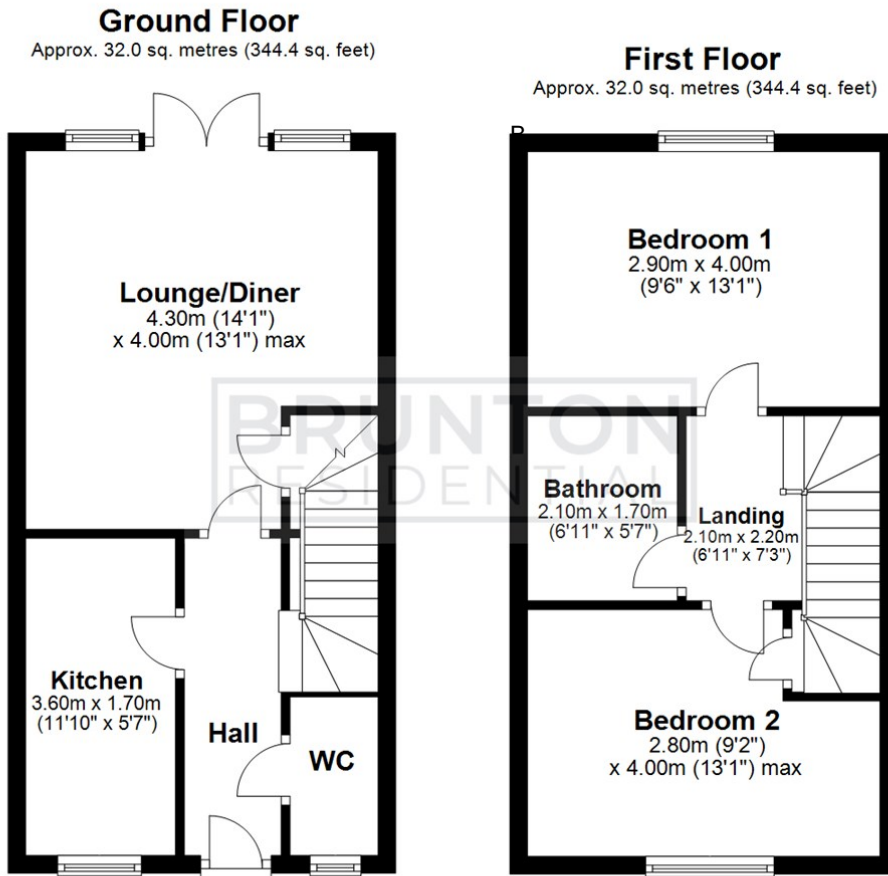
Briefly comprising of, an entrance hall leading to the kitchen area and onto the living/diner with French doors to the rear garden. The kitchen is equipped with a built-in washing machine, dishwasher, oven and hob and fridge freezer. There is also a ground-floor WC for convenience. To the first floor, you will find both bedrooms and a family bathroom. This home is in fantastic condition throughout and has a stunning garden area and off-street parking.

Contact the team today to arrange a viewing to avoid disappointment.



# BRUNTON

## RESIDENTIAL



Total area: approx. 64.0 sq. metres (688.9 sq. feet)

All measurements are approximate and are for illustration only.  
Plan produced using PlanUp.

TENURE :

LOCAL AUTHORITY : Newcastle

COUNCIL TAX BAND : B

EPC RATING : B

SERVICES :

