

BRUNTON

RESIDENTIAL



SOUTH VIEW, NEWSHAM, BLYTH

£750 PCM

BRUNTON

RESIDENTIAL





BRUNTON

RESIDENTIAL



BRUNTON

RESIDENTIAL

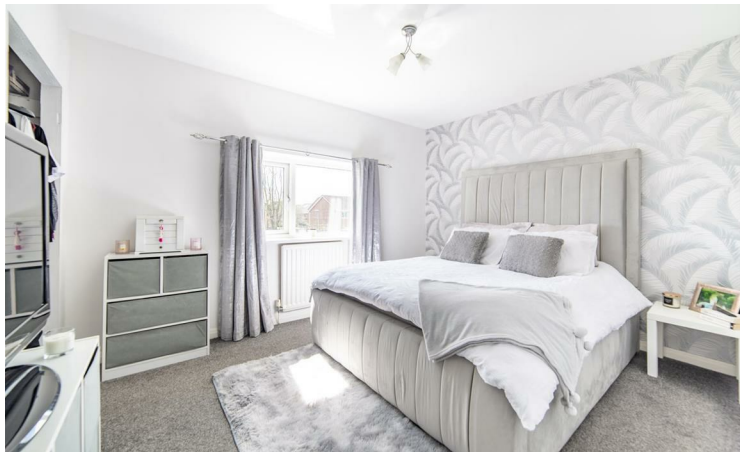


*****360 VIRTUAL TOUR *** AVAILABLE JUNE 2024 - 3 BED END TERRACE HOUSE - RENT
£750PCM - UNFURNISHED.**

This three-bedroom end terrace home is situated on a quiet cul-de-sac of South View in Blyth. Briefly comprising of, entrance hallway, lounge/diner, kitchen and downstairs w.c, To the first floor there are two double bedrooms, a smaller bedroom/home office, and a shower room. The property benefits from combi boiler gas central heating and double glazing throughout. Externally there is a driveway to the front and a large south-facing garden to the rear. Viewings are highly recommended.

BRUNTON

RESIDENTIAL



BRUNTON

RESIDENTIAL

This three-bedroom end terrace home is situated on a quiet cul-de-sac of South View in Blyth. Briefly comprising of, entrance hallway, lounge/diner, kitchen and downstairs w.c, To the first floor there are two double bedrooms, a smaller bedroom/home office, and a shower room. The property benefits from combi boiler gas central heating and double glazing throughout. Externally there is a driveway to the front and a large south-facing garden to the rear. Viewings are highly recommended.



BRUNTON

RESIDENTIAL

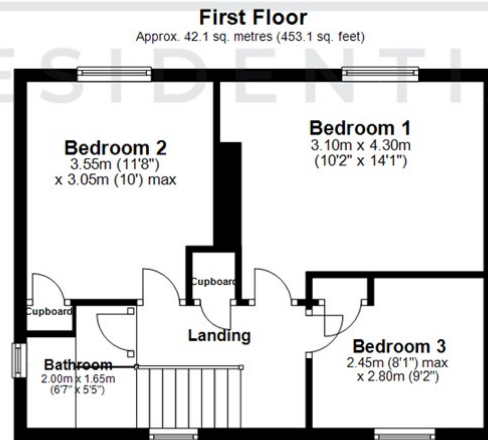
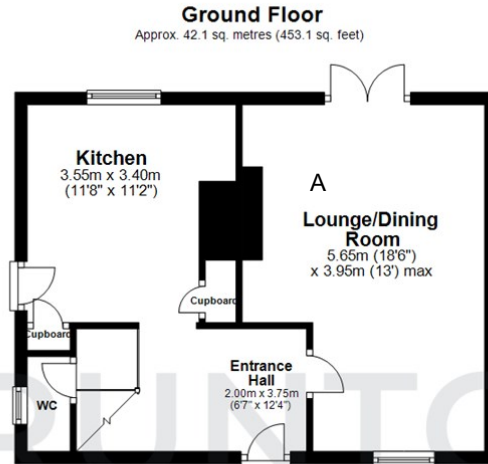
TENURE :

LOCAL AUTHORITY :

COUNCIL TAX BAND : A

EPC RATING : D

SERVICES :



Total area: approx. 84.2 sq. metres (906.2 sq. feet)

All measurements are approximate and are for illustration only.
Plan produced using PlanUp.



Energy Efficiency Rating		Current	Potential
Very energy efficient - lower running costs			
(92 plus) A			84
(81-91) B			
(69-80) C			
(55-68) D		67	
(39-54) E			
(21-38) F			
(1-20) G			
Not energy efficient - higher running costs			
England & Wales		EU Directive 2002/91/EC	

Environmental Impact (CO ₂) Rating		Current	Potential
Very environmentally friendly - lower CO ₂ emissions			
(92 plus) A			
(81-91) B			
(69-80) C			
(55-68) D			
(39-54) E			
(21-38) F			
(1-20) G			
Not environmentally friendly - higher CO ₂ emissions			
England & Wales		EU Directive 2002/91/EC	