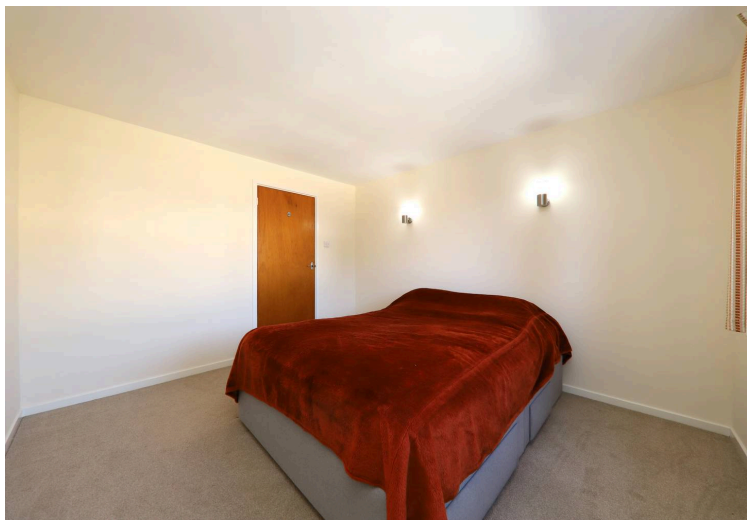


29 Ashleigh Court Solomons Hill, Rickmansworth

£385,000 Leasehold

LARGE LIVING/DINING ROOM • MODERN KITCHEN • TWO DOUBLE BEDROOMS • FAMILY BATHROOM • PRIVATE STORAGE CUPBOARD • PERMIT PARKING • TOWN CENTRE LOCATION • STUNNING VIEWS





A well-presented TWO DOUBLE BEDROOM SECOND FLOOR FLAT, situated in the heart of Rickmansworth Town Centre.

This property comprises of a welcoming entrance hall, that provides access into a large and bright living/dining room with oak planked flooring and views across Rickmansworth. From here there is a door that leads to a modern kitchen that benefits from oak planked flooring and a large storage cupboard. There are two good-sized double bedrooms and a family bathroom with a marble finished floor.

There is one permit parking space, plus the benefit of a garage in block and exclusive access to an adjacent secure store room.

Situated in the most convenient of positions, around the corner from Rickmansworth High Street and Metropolitan/Chiltern Line station. All local amenities are close at hand, whilst the M25 is reached via a drive to Junction 17 or 18. There are leisure facilities for the equestrian, water skier and golfer nearby.

Council Tax band: D

Tenure: Leasehold

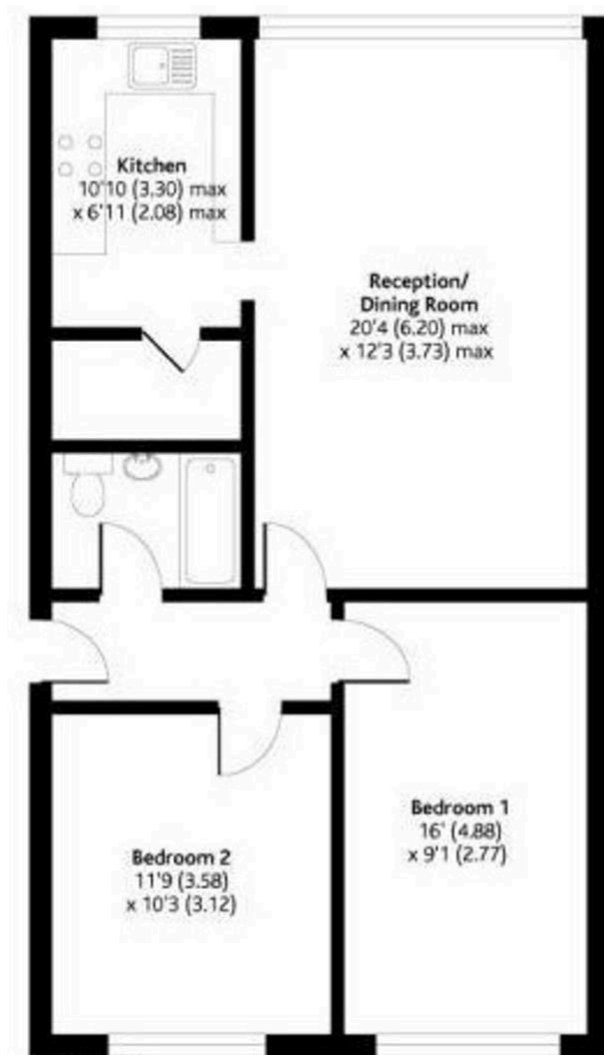
EPC Energy Efficiency Rating: D

EPC Environmental Impact Rating: D



Ashleigh Court, Solomons Hill, Rickmansworth, WD3 1EA

APPROX. GROSS INTERNAL FLOOR AREA 730 SQ FT 67.81 SQ METRES



Whilst these particulars are intended to give a fair description of the property, their accuracy is not guaranteed. Any purchaser must satisfy themselves as to the correctness of statements contained therein. These particulars do not constitute an offer or contract, and statements therein are made without responsibility, or warranty on the part of the vendor or Trend & Thomas, neither of whom are liable to expenses incurred should the property no longer be available. It is not always possible on viewings to confirm the working order of the central heating or appliances included within the sale; therefore, we strongly recommend that prospective buyers satisfy themselves upon these matters before embarking upon the expense of purchase.