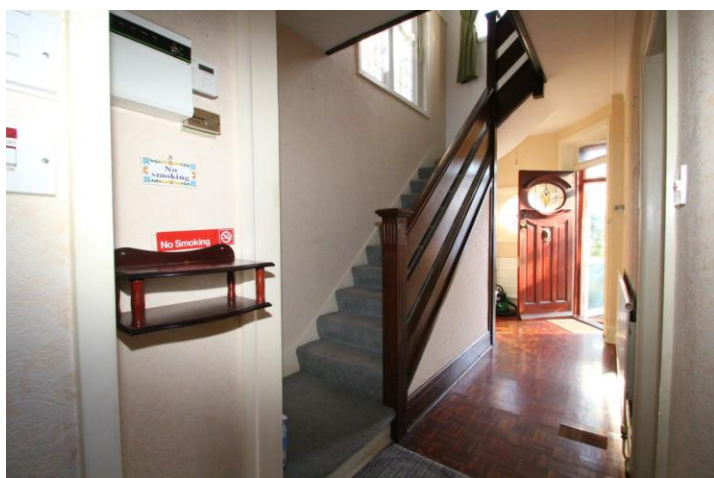




# Hane







- 4 Bedrooms
- 2 Receptions rooms
- Kitchen, Separate dining room
- First floor terrace
- Rear Garden with 2 rear garages

Chain free! Hane Estate Agents are pleased to offer a spacious 4 bedroom semi-detached house. The property benefits from 2 reception rooms, kitchen, dinning room, ground floor wc, first floor shower/wc, en-suite to loft room, garden and 2 rear garages. Parquet flooring on the ground floor and laminate flooring on 1st and loft room. Closest station is Palmers Green Overground. EPC rating E, Council Tax Band F. Gas, electric, water and sewage are all mains supplied. Gas central heating and hot water. Off street parking/front drive. Part C information available on request.



First Floor

Bedroom 1  
3.54 x 3.66m  
11'8" x 12'0"

Bedroom 2  
3.83 x 3.52m  
12'7" x 11'7"

Bedroom 3  
2.62 x 3.62m  
8'7" x 11'11"

Terrace

Stairs leading up to the first floor

Stairs leading to garden

North Arrow



**Contact Us**  
www.hane.co.uk  
office@hane.co.uk  
0208 342 9858

Agents Note: Whilst every care has been taken to prepare these particulars, they are for guidance purposes only. All measurements are approximate and are for general guidance purposes only and whilst every care has been taken to ensure their accuracy, they should not be relied upon and potential buyers/tenants are advised to recheck the measurements.