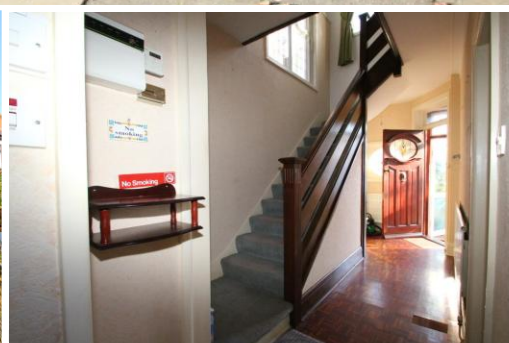




Hane



Connaught Gardens | Palmers Green |

Chain free! Hane Estate Agents are pleased to offer a spacious 4 bedroom semi-detached house. The property benefits from 2 reception rooms, kitchen, dinning room, ground floor wc, first floor shower/wc, en-suite to loft room, garden and 2 rear garages. Parquet flooring on the ground floor and laminate flooring on 1st and loft room. Closest station is Palmers Green Overground. EPC rating E, Council Tax Band F. Gas, electric, water and sewage are all mains supplied. Gas central heating

£620,000
Freehold

- 4 Bedrooms
- 2 Receptions rooms
- Kitchen, Separate dining room
- First floor terrace
- Rear Garden with 2 rear garages