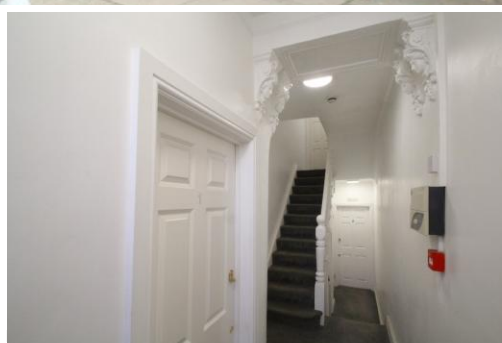




# Hane



## Salisbury Road | | London | N4 1JZ

Hane Estate Agents offer a self contained studio flat in good condition on the top floor in a period conversion. The property offers an open plan kitchen/dining area, shower room/w.c. and storage. Situated off Green Lanes close to Manor House Piccadilly Line (Zone 2) and Harringay British Rail station. Council Tax Band B, EPC rating D. Electric, gas, water, sewage are all mains supply, Gas central heating and hot water. Service charge £900 pa and £350 pa ground rent. Current tenant paying £1250pcm,

Asking Price Of  
**£169,950**  
**Leasehold**

- Studio
- Open plan living/kitchen
- Shower room/toilet
- Wooden Flooring
- Gas central heating and hot water