



Hane





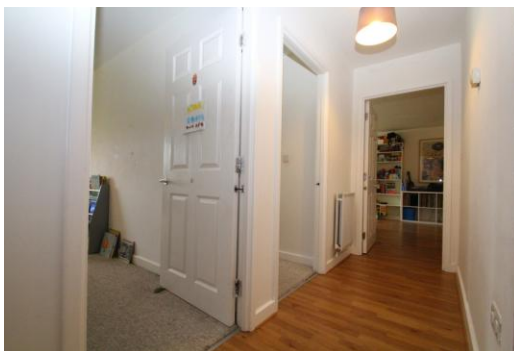
16 Hawthorne House, Grovelands Road, South Tottenham, London, N15 6BW

£440,000 Leasehold

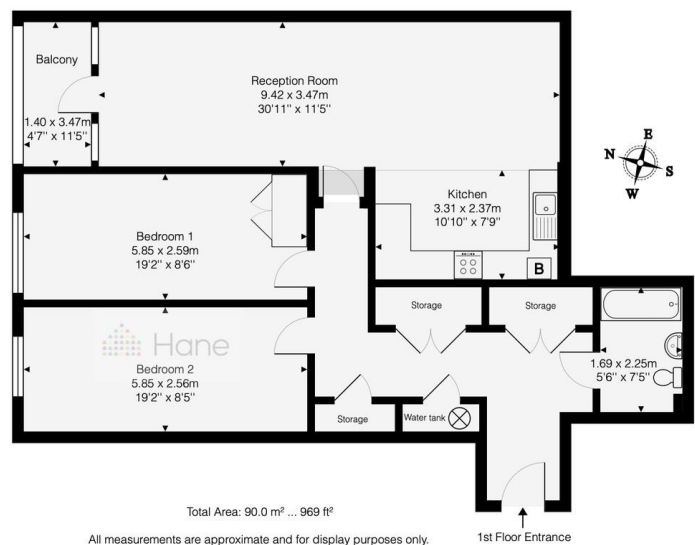
- 2 Double Bedrooms
- Open plan living room/kitchen/diner
- Family bathroom
- Fitted kitchen
- Floor-to-ceiling windows in living area

EPC Rating 'C'

Hane Estate Agents offer a 2 bedroom 1st floor flat with a private balcony set within a modern block with lift access. The property has an open plan living room/kitchen/diner and family bathroom. Floor-to-ceiling windows in living area over looking Markfield Park. Close to 2 main stations, South Tottenham (0.3 miles away) servicing the Overground is a 12-minute walk from the property, and Seven Sisters (0.5 miles) is a 16-minute walk servicing the Overground, Stansted Express and Victoria tube line. Markfield Park and Walthamstow Wetlands are a short walk away providing green space for tranquil walks and other leisure activities. Bus routes nearby: 318, 476, 76. Combined with the local eateries, bars, cafes and shops this area is perfectly located with a combination of close-by



Hawthorne House, Grovelands Road, Tottenham, London, N15 6BW



Hane Estate Agents

555 Green Lanes
Harringay
London
N8 0RL

Contact Us

www.hane.co.uk
office@hane.co.uk
0208 342 9858

Agents Note: Whilst every care has been taken to prepare these particulars, they are for guidance purposes only. All measurements are approximate and for general guidance purposes only and whilst every care has been taken to ensure their accuracy, they should not be relied upon and potential buyers/tenants are advised to recheck the measurements