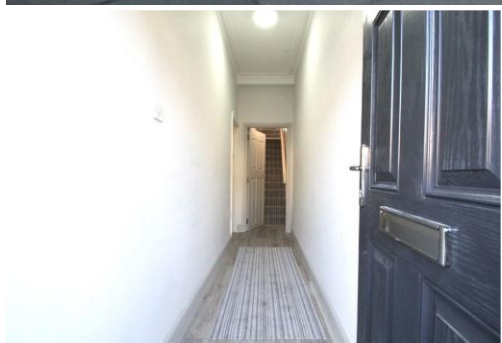




Hane



Woodlands Park Road | Haringey | | N15

Chain free! Share of freeh. Hane Estate Agents offer a Newly refurbished spacious split level 1 double bedroom first floor (top floor) converted flat. New wood flooring throughout and new carpets on the stairs. Close to Turnpike Lane Piccadilly Line Underground. EPC rating E, Council Tax band B. Gas, electric, water, sewage are all mains supply, Gas central heating and hot water. Permit parking, on street. Part C information available on request.

£405,000
Leasehold

- Newly Refurbished
- 1 Double Bedroom
- Large Living Room
- New Kitchen/Diner
- New Bathroom/toilet