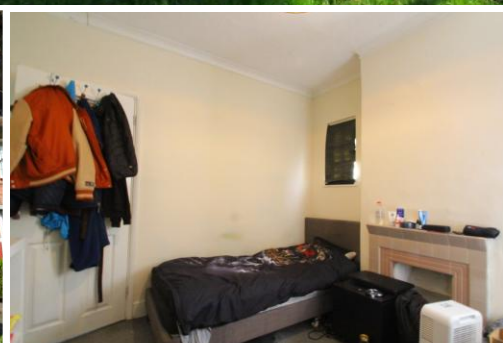




Hane

Sold



Risley Avenue | Tower Gardens |

Hane Estate Agents offer a well presented 3 bedroom semi detached house with a large garden. The property has potential for a rear extension STPP. Situated in a quiet area within a short bus ride to Turnpike Lane underground. EPC rating E. Council tax band C. The property is in a Conservation Area. Gas, electric, water, sewage are all mains supply. Gas central heating and hot water. Permit parking, on street. Part C information available on request.

Asking Price Of
£499,950
Freehold

- 3 Bedroom
- 2 Reception Rooms
- Bathroom/w.c & Separate w.c
- Fitted Kitchen
- Large Rear Garden with Side Access