



Hane



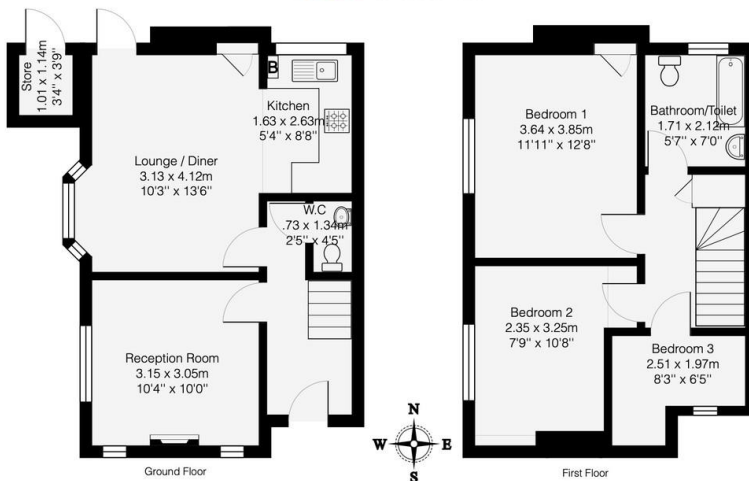
Risley Avenue

Tower Gardens, Harringey, London, N17 7HN

Asking Price Of
£525,000
Freehold

Property Summary

Hane Estate Agents offer a well presented 3 bedroom semi detached house with a large garden. The property has a living room, fitted kitchen, separate reception room, bathroom/w.c on the first floor and a w.c on the ground floor and large rear garden with side access. The property has potential for a rear extension STPP.



Risley Avenue, Tottenham, London, N17 7HN

Area: 74.5 m² ... 802 ft²

All measurements are approximate and for display purposes only.

Energy performance certificate (EPC)	
Address London	Energy rating E
Valid until 31 April 2024	Certificate number 0154-0156-0202-1458
Property type End terrace house	Total floor area 69 square metres
Rules on letting this property	
Properties can be let if they have an energy rating from A to E.	
You can read guidance for landlords on the requirements and exemptions of a certificate at https://www.gov.uk/guidance/energy-performance-certificate-for-landlords	

- 3 Bedroom
- 2 Reception Rooms
- Bathroom/w.c & Separate w.c
- Fitted Kitchen
- Large Rear Garden with Side Access
- Potential for Rear Extension STPP
- EPC Rating E
- Council Tax Band C
- Conservation Area

555 Green Lanes
Harringay
London
N8 0RL

www.hane.co.uk
office@hane.co.uk
0208 342 9858

Agents Note: Whilst every care has been taken to prepare these particulars, they are for guidance purposes only. All measurements are approximate and for general guidance purposes only and whilst every care has been taken to ensure their accuracy, they should not be relied upon and potential buyers/tenants are advised to recheck the measurements