



**BRITISH  
PROPERTY  
AWARDS**

**2021  
2024**

★★★★★

**GOLD WINNER**

ESTATE AGENT  
IN BARNET

Mantlestates.com



estates.com



**£385,000**

**TENURE : LEASEHOLD**

**Wolfson Court, Whetstone, London N20**

**Bedrooms : 2**

**Bathrooms : 2**

**Reception Rooms : 1**

**2 BEDROOM 2nd FLOOR FLAT**

**BALCONY**

**2 BATHROOMS**

**GATED DEVELOPMENT**

**LEASE: 137 Years remaining**

**ALLOCATED UNDER GROUND  
PARKING**

**Mantlestates**

2A Church Hill Road, East Barnet, EN4 8TB

office@mantlestates.com | 0208 275 1555

Website: <https://mantlestates.com/>



Well Presented 2 Bedroom, 2 Bathroom Second Floor Flat With Balcony in Gated Development with Long Lease & Under Ground Allocated Parking. Popular development. Access to Residence Gymnasium. Well located to local shopping facilities & Parks.

OFFERED CHAIN FREE.

**ENTRANCE HALL:** 12' 00" x 3' 09" (3.66m x 1.14m)

Entry phone, carpet, electric heater, storage cupboard.

**LOUNGE AREA:** 11' 06" x 10' 03" (3.51m x 3.12m)

Double-glazed window to front aspect x 2, carpet.

**DINING AREA:** 9' 09" x 9' 03" (2.97m x 2.82m)

Double-glazed window to the front aspect, carpet, electric heater, and door to the balcony.

**BALCONY:** 10' 10" x 3' 03" (3.30m x 0.99m)

**KITCHEN:** 6' 02" x 9' 00" (1.88m x 2.74m)

Wall and floor standing kitchen units, plumbed washing machine, stainless steel sink drainer with mixer tap, electric hob, electric oven, extractor, plumbed for dishwasher, fitted fridge freezer, spot lights.

**BATHROOM:** 10' 02" x 6' 00" (3.10m x 1.83m)

Double glazed window to side aspect, panel bath with mixer tap and shower attachment, low-level flush, wash hand basin with mixer tap, heated towel rail, storage cupboard with hot water system, extractor.

**BEDROOM ONE:** 10' 05" x 10' 02" (3.17m x 3.10m)

Double glazed window to rear aspect, carpet, electric heater, fitted wardrobe.

**EN-SUITE:** 6' 08" x 5' 06" (2.03m x 1.68m)

Double glazed window to side aspect, part tiled walls, low level flush water closet, wash hand basin with mixer tap, corner shower cubicle, heated towel rail, spot lights, extractor.

**BEDROOM 2:** 10' 01" x 10' 03" (3.07m x 3.12m)

Double glazed window to rear aspect, fitted wardrobe, carpet, electric heater.

**EXTERNALS:**

Gated underground parking, communal gardens, gymnasium access.

**Mantlestates**

2A Church Hill Road, East Barnet, EN4 8TB

office@mantlestates.com | 0208 275 1555

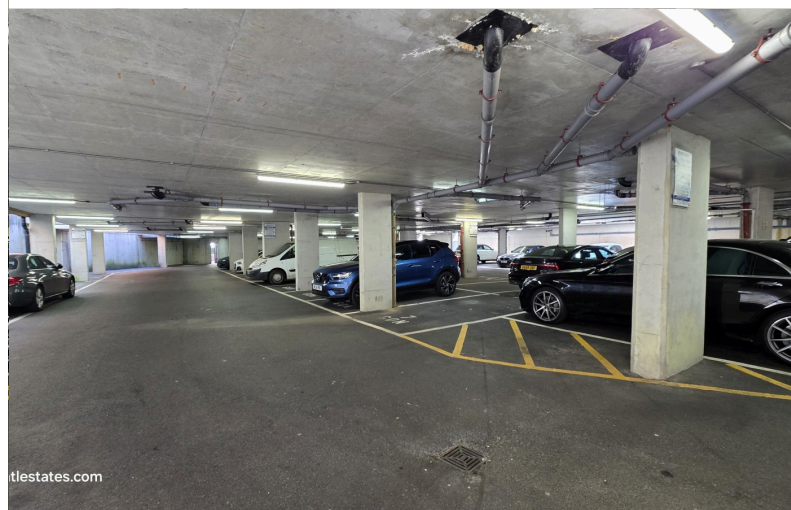
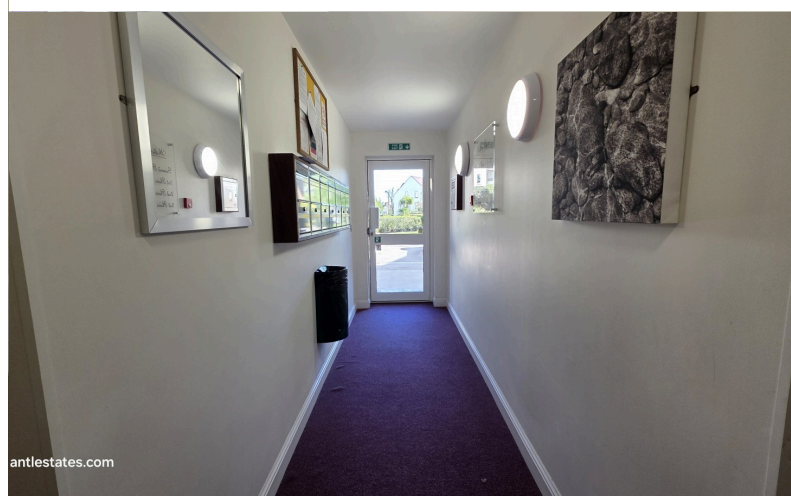
Website: <https://mantlestates.com/>











**Mantlestates**

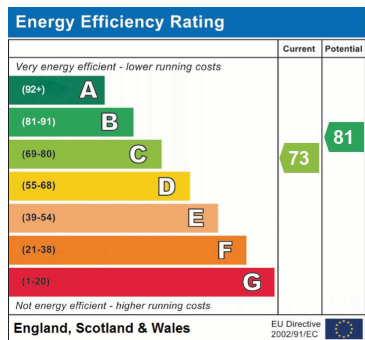
2A Church Hill Road, East Barnet, EN4 8TB

office@mantlestates.com | 0208 275 1555

Website: <https://mantlestates.com/>







Address: Wolfson Court, Whetstone N20

## Mantlestates

2A Church Hill Road, East Barnet, EN4 8TB  
 office@mantlestates.com | 0208 275 1555  
 Website: <https://mantlestates.com/>



