



**BRITISH
PROPERTY
AWARDS**

**2021
2024**

★ ★ ★ ★ ★

GOLD WINNER

ESTATE AGENT
IN BARNET



Asking Price £325,000

TENURE : LEASEHOLD

Girton Court, Whetstone N20

Bedrooms : 1

Bathrooms : 1

Reception Rooms : 1

2nd FLOOR

LIFT

ACCESS TO GYM

ALLOCATED PARKING

CHAIN FREE

PRIVATE BALCONY

Mantlestates

2A Church Hill Road, East Barnet, EN4 8TB

office@mantlestates.com | 0208 275 1555

Website: <https://mantlestates.com/>



Mantlestates are pleased to offer this gated and spacious One bedroom flat on the 2nd floor with a balcony and long lease. Lift, gym access and underground parking. Near to local shopping facilities and transport links.

OFFERED CHAIN FREE.

ENTRANCE HALL: 11' 04" x 3' 10" (3.45m x 1.17m)

Carpet, electric heater, entry phone.

STORAGE CUPBOARD: 3' 08" x 2' 03" (1.12m x 0.69m)

Hot water cylinder.

W/C: 5' 00" x 3' 07" (1.52m x 1.09m)

Low-level flush, electric heater, wash hand basin with mixer tap set in a vanity unit.

LOUNGE / DINER: 20' 08" x 13' 00" (6.30m x 3.96m)

ACTUAL SIZES: (20'.08" > 12'.10") X (13'.00" > 9'.00"). Double-glazed window to rear aspect, double-glazed door to balcony, carpet, electric heater.

BALCONY: 12' 00" x 2' 05" (3.66m x 0.74m)

KITCHEN: 7' 10" x 8' 01" (2.39m x 2.46m)

Double-glazed window to rear aspect, wall and base units, integrated fridge freezer, washing machine, dishwasher, electric hob and electric oven, extractor hood, spot lights, part tiled walls, and tiled floor.

BEDROOM: 12' 05" x 10' 06" (3.78m x 3.20m)

Double-glazed window to rear aspect, carpet, electric heater.

DRESSING AREA: 3' 07" x 6' 04" (1.09m x 1.93m)

Carpet

BATHROOM: 7' 05" x 6' 04" (2.26m x 1.93m)

Low-level flush w/c, wash hand basin with mixer taps set in a vanity unit, spotlights, extractor fan, heated flooring, panelled bath with mixer tap and shower attachment, part tiled walls.

Mantlestates

2A Church Hill Road, East Barnet, EN4 8TB

office@mantlestates.com | 0208 275 1555

Website: <https://mantlestates.com/>





Mantlestates



Mantlestates

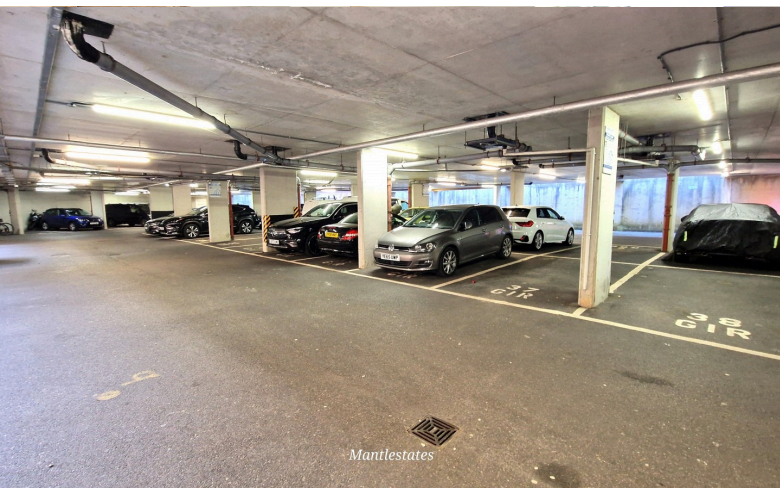




Mantlestates



Mantlestates



Mantlestates



Mantlestates



Mantlestates



Mantlestates

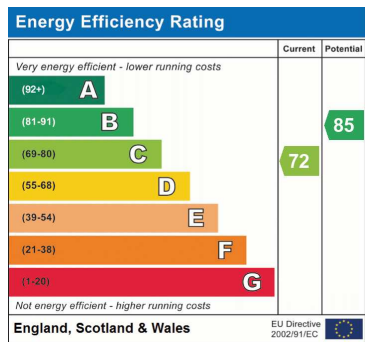


Mantlestates



Mantlestates
 2A Church Hill Road, East Barnet, EN4 8TB
 office@mantlestates.com | 0208 275 1555
 Website: <https://mantlestates.com/>



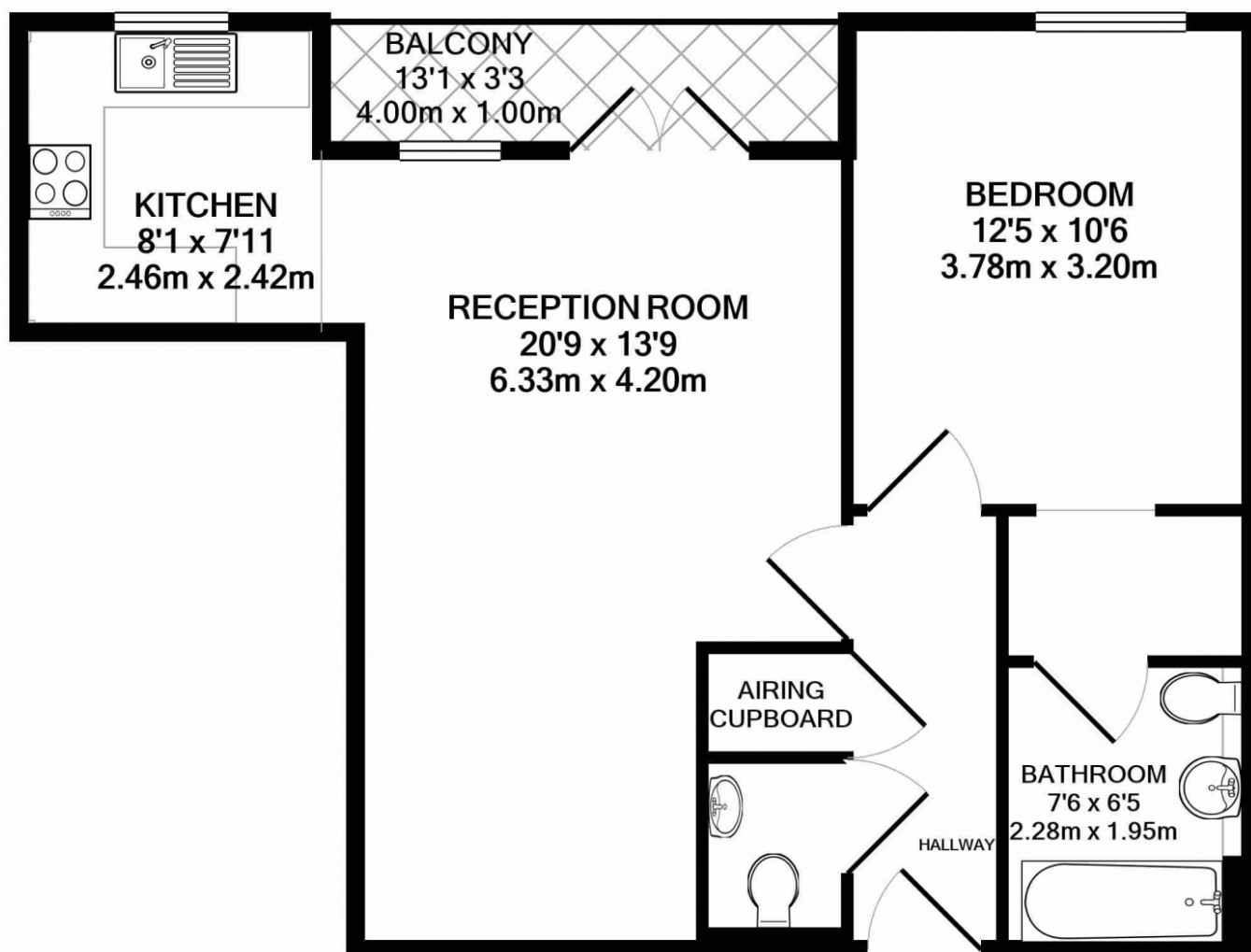


Address: Girtton Court, N20

Mantlestates

2A Church Hill Road, East Barnet, EN4 8TB
 office@mantlestates.com | 0208 275 1555
 Website: <https://mantlestates.com/>





GIRTON COURT, MAGDALENE GARDENS, LONDON, N20

TOTAL APPROX. FLOOR AREA 602 SQ.FT. (56.0 SQ.M.)

Whilst every attempt has been made to ensure the accuracy of the floor plan contained here, measurements of doors, windows, rooms and any other items are approximate and no responsibility is taken for any error, omission, or mis-statement. This plan is for illustrative purposes only and should be used as such by any prospective purchaser. The services, systems and appliances shown have not been tested and no guarantee as to their operability or efficiency can be given

Made with Metropix ©2021

Mantlestates

2A Church Hill Road, East Barnet, EN4 8TB

office@mantlestates.com | 0208 275 1555

Website: <https://mantlestates.com/>

