

**ROBERT
HALE
HOMES FOR
SALE**

6, Wheel Centre, Broad St.,
March, Cambs. PE15 8TX

MARCH

01354 652785

E-mail:
march@robert-hale-homes.co.uk

Website:
www.robert-hale-homes.co.uk

7 DAYS

WISBECH 465222

MARCH 652785

NAEA NETWORK

OVER 1000 OFFICES



**50 GREEN STREET,
MARCH,
PE15 9DZ.**

THE PROPERTY

VERY DECEPTIVE, BEAUTIFULLY PRESENTED, THREE
BEDROOMED DETACHED BUNGALOW * STUNNING 32FT FITTED
KITCHEN/DINER * LOVELY LARGE ENCLOSED LANDSCAPED
GARDENS TO REAR * MULTI-VEHICLE OFF ROAD PARKING
* GARAGE/UTILITY * GAS FIRED CENTRAL HEATING * DOUBLE
GLAZING * VIEWING ABSOLUTELY ESSENTIAL!

PRICE

£350,000 FREEHOLD EPC BAND E

COUNCIL TAX

TO BE ASSESSED FENLAND DISTRICT COUNCIL
REF. NO. M4802

SELLING? FREE, FREE, VALUATIONS!



For your own peace of mind, always have an independent survey,
and always test all systems and appliances!
Items displayed in photographs may not necessarily be included.



REF. NO. M4802

50 GREEN STREET, MARCH

HOW TO GET THERE

From our March office travel through Broad Street and just after crossing the river bridge turn immediately left into Elwyn Road. Continue and take the 3rd turning into Badgeney Road. Proceed and take the first turning right into Green Street.

THE ACCOMMODATION

(Dimensions given are approximate only).

FRONT ENTRANCE LOBBY

SIDE LOBBY

With tiled floor, doorway off to front and rear.

ENTRANCE HALL

With tiled floor.

LOUNGE

16' 7" (max) x 10' 5" (max) With bay window, electric "flame effect" fire.

FITTED KITCHEN/DINER

32' (max) x 15' (max) With tiled floor, double glazed French doors to rear garden, Belling electric range, electric hob extractor, display cupboards with glazed doors, spice drawer, worktop with drawers and cupboard under plus concealed lighting over, Island unit with inset stainless steel single drainer sink unit with cupboard under and with a breakfast bar, fitted dresser unit, built in storage, multi fuel burner, worktop with space/plumbing under for dishwasher and automatic washing machine, space for condensing tumble drier.

BATHROOM/W.C./SHOWER ROOM

With panelled bath with mixer tap and shower attachment, tiled floor, part tiled walls, pedestal washbasin with cupboards under, low level w.c., heated towel rail, Quadrant shower cubicle with Triton electric shower, access to loft.

BEDROOM NO. 1

13' 3" (max) x 10' 1" (max) With bay window.

BEDROOM NO. 2

12' (max) x 12' (max).

BEDROOM NO. 3

10' 5" (max) x 9' (max).

OUTSIDE

**TIMBER STORE SHED
EXTERNAL POWER POINTS**

**COLD WATER TAP
SUMMER HOUSE**

GARAGE/UTILITY

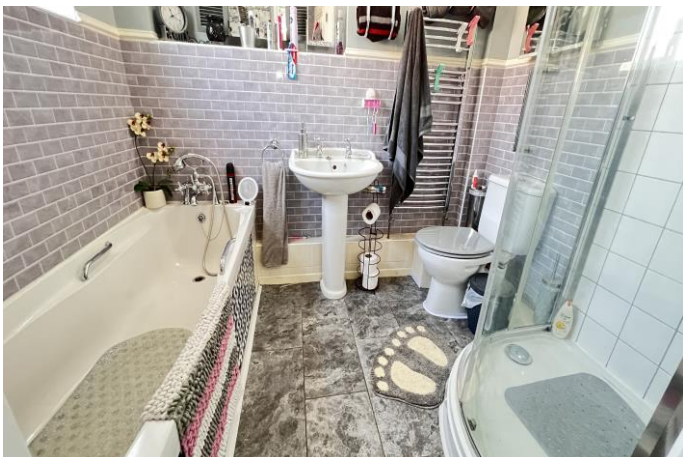
GARDENS

Low maintenance gardens to front, down to a block paved and shingle multi-vehicle off road parking space. Block paved pathway to side entrance door, lovely enclosed landscaped gardens to rear with ornamental pond and water feature, paved patio, lawn, borders, trees, conifers etc.



REF. NO. M4802

50 GREEN STREET, MARCH



REF. NO. M4802

50 GREEN STREET, MARCH

