

**ROBERT
HALE
HOMES FOR
SALE**

6, Wheel Centre, Broad St.,
March, Cambs. PE15 8TX

MARCH

01354 652785

E-mail:
march@robert-hale-homes.co.uk

Website:
www.robert-hale-homes.co.uk

7 DAYS

WISBECH 465222

MARCH 652785

NAEA NETWORK

OVER 1000 OFFICES



**6 SOUTHWELL CLOSE
MARCH
PE15 8JW**

THE PROPERTY

VERY DECEPTIVE, MODERN THREE BEDROOMED END TERRACED HOUSE * FITTED KITCHEN WITH BUILT IN OVEN AND HOB ETC. * ATTRACTIVE ENCLOSED COURTYARD GARDEN * TWO ALLOCATED CAR SPACES * ROOF TERRACE !! * GAS FIRED CENTRAL HEATING * DOUBLE GLAZING * VIEW QUICKLY!

PRICE

£225,000 FREEHOLD EPC BAND C

COUNCIL TAX

BAND B FENLAND DISTRICT COUNCIL REF. NO. M4757

SELLING? FREE, FREE, VALUATIONS!



For your own peace of mind, always have an independent survey,
and always test all systems and appliances!
Items displayed in photographs may not necessarily be included.



REF. NO. M4757

6 SOUTHWELL CLOSE, MARCH

HOW TO GET THERE

From the Fountain near our March office proceed along Dartford Road, which becomes Wisbech Road. At the mini roundabout turn right into Norwood Road and take the second turning right into Southwell Close.

THE ACCOMMODATION

(Dimensions given are approximate only).

ENTRANCE HALL

with stairway off, central heating thermostat.

LOUNGE

12' 4" (max) x 12' 3" (max) with double glazed French doors to rear garden.

FITTED KITCHEN/DINER

12' 4" (max) x 12' 3" (max) with double glazed French doors to rear garden, space/plumbing for automatic washing machine, inset stainless steel single drainer sink unit with cupboard under, preparation surfaces with drawers and cupboards under, range of wall cupboards, built in electric oven, built in gas hob, electric hob hood, part tiled walls.

GROUND FLOOR CLOAKROOM/W.C.

with hand washbasin with tiled splashback, low level w.c., built in cupboard housing hot water cylinder.

GROUND FLOOR BEDROOM NO. 3

10' 3" (max) x 7' 6" (max).

FIRST FLOOR

LANDING

access via foldaway ladder to loft, built in cupboard housing Ideal wall mounted gas fired central heating boiler, French doors to **ROOF TERRACE**.

BATHROOM/W.C./SHOWER ROOM

with panelled bath with mixer tap and shower overhead, hand washbasin with mixer tap, integrated low level w.c., shaver point, heated towel rail.

BEDROOM NO. 1

11' 9" (max) x 9' 8" (max).

BEDROOM NO. 2

12' 3" (max) x 10' 3" (max).

OUTSIDE

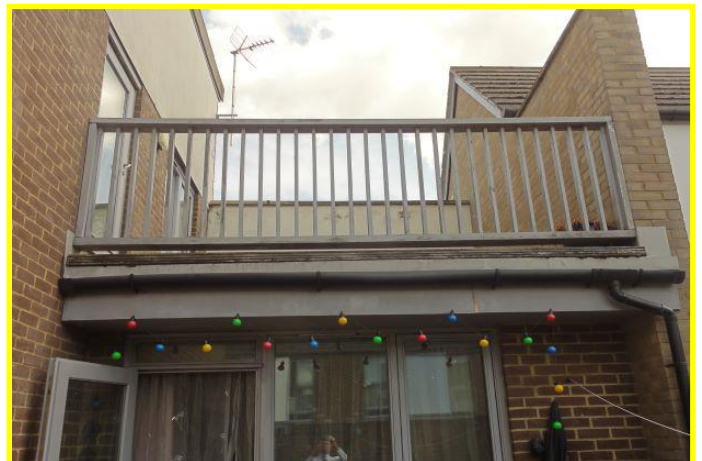
TWO ALLOCATED OFF ROAD PARKING SPACES

GARDENS

paved front garden area. Enclosed courtyard garden to rear, part laid to lawn with paved patio area.

N.B.

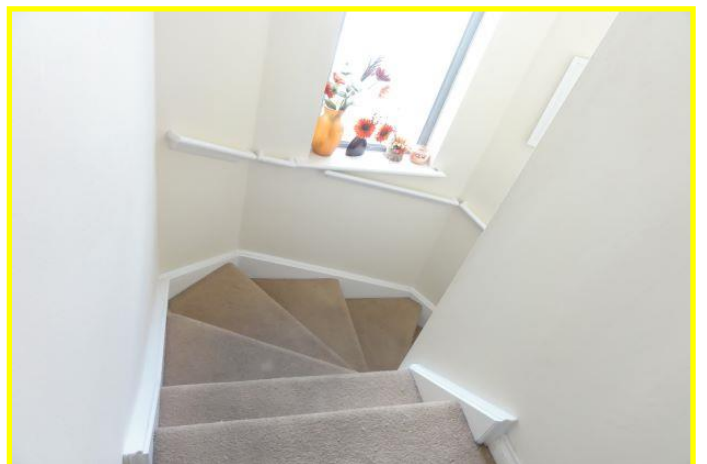
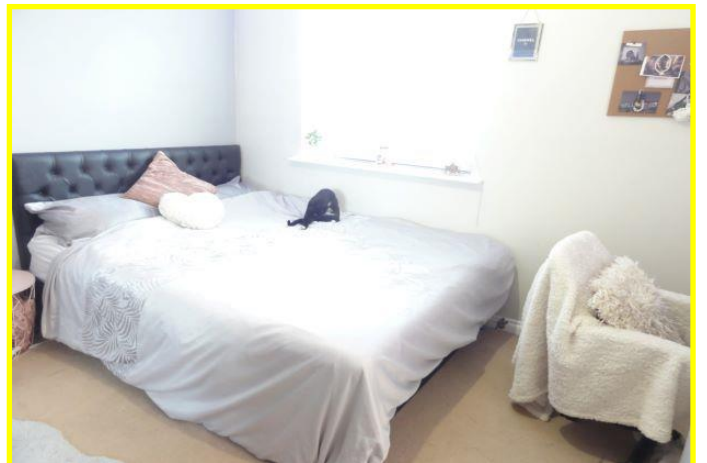
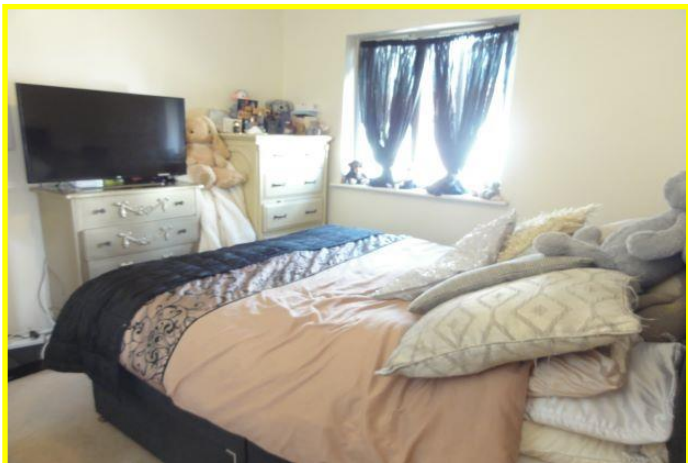
There is a Service Charge for the Estate which is currently £48.00 per month.



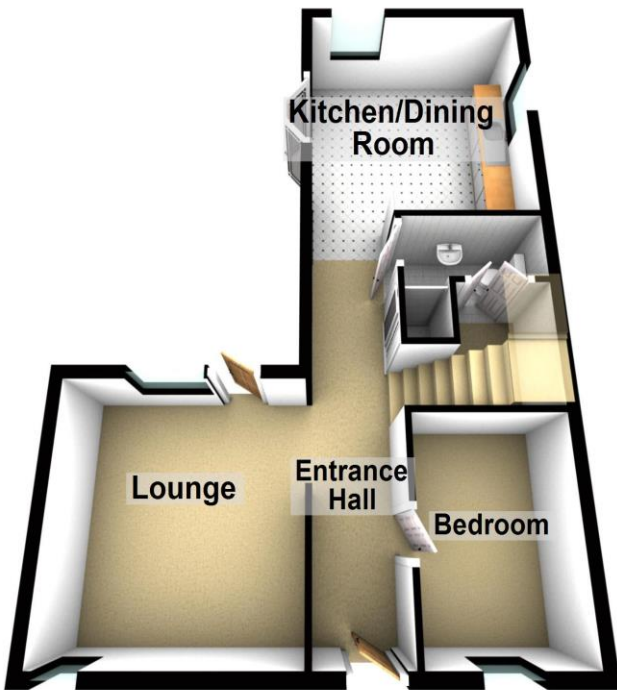
REF. NO. M4757

6 SOUTHWELL CLOSE, MARCH





Ground Floor



First Floor

