

**ROBERT
HALE
HOMES FOR
SALE**

6, Wheel Centre, Broad St.,
March, Cambs. PE15 8TX

MARCH

01354 652785

E-mail:
march@robert-hale-homes.co.uk

Website:
www.robert-hale-homes.co.uk

7 DAYS

WISBECH 465222

MARCH 652785

NAEA NETWORK

OVER 1000 OFFICES



**139B WISBECH ROAD
MARCH, PE15 8ET**

THE PROPERTY

BEAUTIFULLY PRESENTED, VERY DECEPTIVE, EXTENDED THREE BEDROOMED DETACHED HOUSE SITUATED ON A GOOD PLOT WITH EASY ACCESS TO BOTH TOWN AND THE MAIN ROAD NETWORK! * 20FT FITTED KITCHEN WITH BUILT-IN OVEN, HOB, MICROWAVE, FRIDGE/FREEZER AND DISHWASHER! * LOVELY CONSERVATORY * GENEROUS ATTRACTIVE ENCLOSED REAR GARDENS * 300 SQ FT GARAGE/WORKSHOP! * 255 SQ FT STORE * MULTI-VEHICLE PARKING * GAS CENTRAL HEATING * DOUBLE GLAZING * VIEWING ESSENTIAL!!

PRICE	£335,000	FREEHOLD	EPC BAND D
COUNCIL TAX	BAND C	FENLAND DISTRICT COUNCIL	REF. NO. M4791

SELLING? FREE, FREE, VALUATIONS!



For your own peace of mind, always have an independent survey,
and always test all systems and appliances!
Items displayed in photographs may not necessarily be included.



REF. NO. M4791

139B WISBECH ROAD, MARCH

HOW TO GET THERE

From the Fountain near our March office proceed along Dartford Road. Follow the road for about 0.8 mile and the property is on the right hand side.

THE ACCOMMODATION

(Dimensions given are approximate only).

ENTRANCE HALL

With laminate floor, central heating programmer, stairway off.

LOUNGE

13'8"(max) x 12'7"(max) With bay window, laminate floor.

FITTED KITCHEN/DINER

20'9"(max) x 12'(max) With laminate floor, double glazed French doors to conservatory, peninsula preparation surface with cupboards under and built in induction hob and built-in electric oven, wall cupboards, built-in microwave, built-in fridge/freezer, built-in dishwasher, inset single drainer 1½ bowl ceramic sink with mixer tap and cupboards under, understairs cupboard, electric hob hood.

GROUND FLOOR CLOAKROOM/W.C./UTILITY

With flush suite, pedestal wash basin with tiled splashback, work top with space/plumbing under for automatic washing machine and space/vent for tumble drier, double wall cupboard.

BRICK & UPVC CONSERVATORY

13'(max) x 11'4(max) With tiled floor, double glazed French doors to rear garden.

FIRST FLOOR

LANDING

With built-in airing cupboard housing gas fired wall mounted Combi boiler.

BATHROOM/W.C.

With laminate floor, heated towel rail, shower bath with mixer tap with folding screen, integrated hand washbasin with mixer tap and cupboards under, integrated low level w.c., floor cupboards, medicine cabinet, part tiled walls.

BEDROOM NO. 1

13'(max) x 8'3"(max)

BEDROOM NO. 2

10'3"(max) x 9'9"(max)

BEDROOM NO. 3

13'10"(max) x 7'10"(max)

OUTSIDE

STORE

20'7"(max) x 12'4"(max)

GARAGE/WORKSHOP

25'(max) x 12'3"(max) With up and over door, personal door, power and lighting.

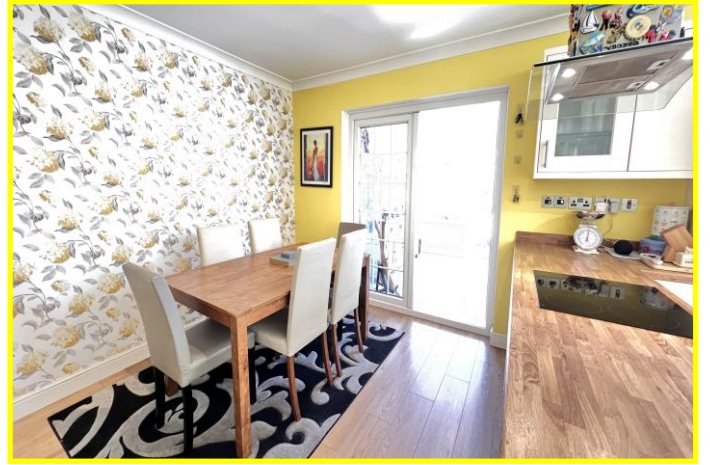
GARDENS

Gardens to front, down to a shingle multi-vehicle off road parking space. Timber double gates to side open onto the generous enclosed rear garden which has additional shingle off road parking space, paved patio, lawns, borders, shrubs, shingle patio area, and a seasonal vegetable plot.



REF. NO. M4791

139B WISBECH ROAD, MARCH



REF. NO. M4791

139B WISBECH ROAD, MARCH

