

**ROBERT
HALE
HOMES FOR
SALE**

Falcon House, Falcon Road,
Wisbech, Cambs. PE13 1AU

WISBECH

01945 465222

E-mail:

wisbech@robert-hale-homes.co.uk

Website:

www.robert-hale-homes.co.uk

7 DAYS

WISBECH 465222

MARCH 652785

NAEA NETWORK

OVER 1000 OFFICES



**CASA
353, HIGH ROAD
NEWTON
PE13 5ES**

THE PROPERTY: A BEAUTIFUL AND IMMACULATELY PRESENTED THREE BEDROOMED LINK DETACHED CHALET STYLE HOUSE WITH STUNNING VIEWS OVER OPEN FIELDS AND SITUATED IN A HIGHLY POPULAR VILLAGE * 19FT LOUNGE/DINER * ATTRACTIVE GENEROUS ENCLOSED GARDENS TO REAR * GARAGE WITH ELECTRIC DOOR PLUS OFF ROAD PARKING * OIL FIRED CENTRAL HEATING * DOUBLE GLAZING
* REALLY MUST BE VIEWED TO BE APPRECIATED!!

THE PRICE:

£225,000

FREEHOLD EPC BAND E

REF.8831

SELLING? FREE, FREE, VALUATIONS!

For your own peace of mind, always have an independent survey,
and always test all systems and appliances!
Items displayed in photographs may not necessarily be included.



REF:8831 CASA, 353 HIGH ROAD, NEWTON

COUNCIL TAX: BAND B FENLAND DISTRICT COUNCIL

HOW TO GET THERE: From the Wisbech town centre roundabout take the A1101 Long Sutton/Sleaford exit over Freedom Bridge. Follow the road for about 2.7 miles then turn left signed Newton & Tydd St Giles. Follow the main road for about 1.5 miles and the property is on the left hand side overlooking fields.

THE ACCOMMODATION: (Dimensions given are approximate only)

ENTRANCE HALL: With laminate floor, stairway off, understairs cupboard.

LOUNGE/DINER: 19' (max) x 19' (max) 'L' shaped, feature fire surround.

KITCHEN: 10' 1" (max) x 9' 6" (max) With electric cooker point, preparation surfaces with drawers & cupboards under, range of wall cupboards, inset stainless steel single drainer sink unit with cupboard under.

GROUND FLOOR BEDROOM 3:
10' 3" (max) x 8' (max) With double glazed patio doors to rear garden.

FIRST FLOOR:

LANDING: With built in airing cupboard housing hot water cylinder with immersion heater.

BATHROOM/W.C.: With panelled bath with thermostatic shower overhead, pedestal wash basin, low level W.C., part tiled walls.

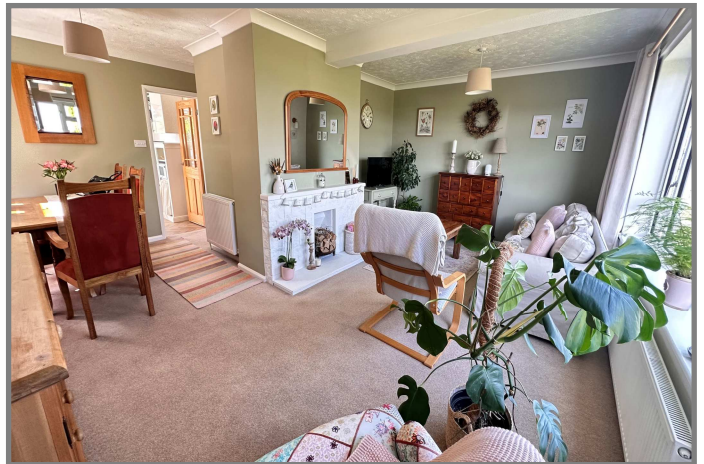
BEDROOM NO 1: 12' 7" (max) x 12' (max).

BEDROOM NO 2: 12' 7" (max) x 10' 4" (max).

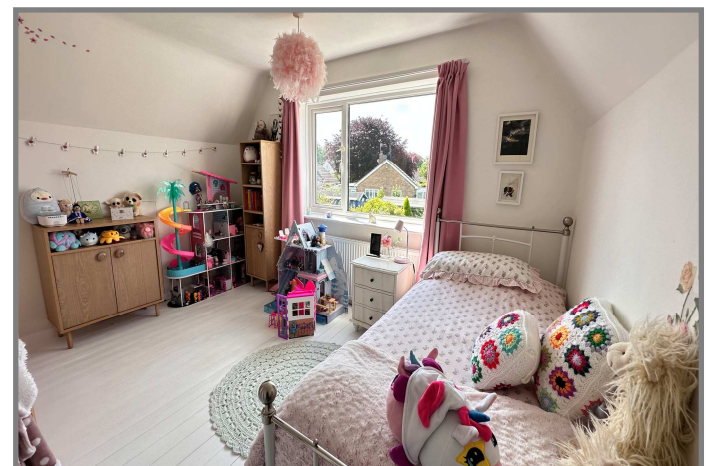
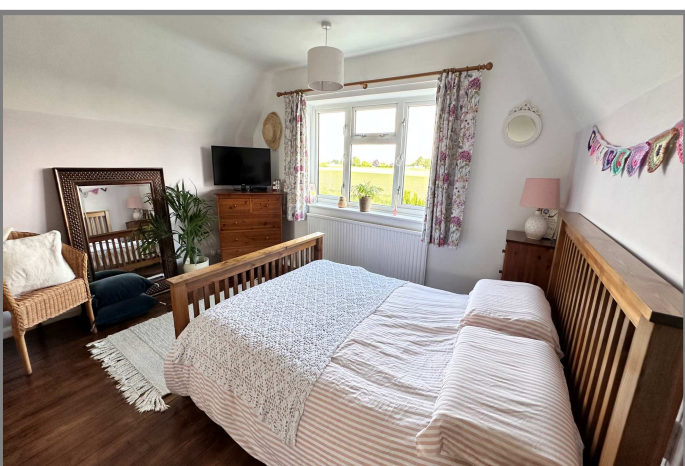
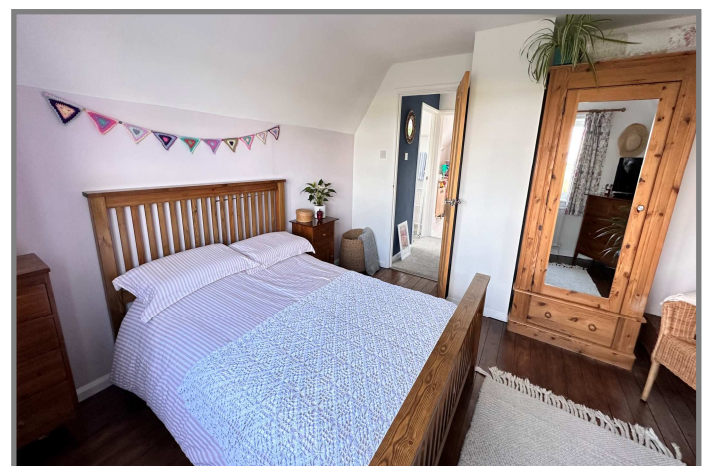
OUTSIDE: **OIL STORAGE TANK : COLD WATER TANK : BRICK OUTHOUSE (housing oil fired central heating boiler). GREEN HOUSE : TIMBER STORE SHED**

GARAGE: 15' (max) x 8' 2" (max) With electronically operated remote controlled roller door, power & lighting, personal door.

GARDENS: To front, with stunning views over open fields and laid to lawn with shrubs, borders, conifers and a concrete strip driveway/multi-vehicle off road parking space. Timber gate to side opens onto a concrete pathway leading to the generous attractive enclosed rear garden which is laid to lawn with numerous trees, shrubs, borders, small pond and a paved patio.



REF:8831 CASA, 353 HIGH ROAD, NEWTON



REF:8831 CASA, 353 HIGH ROAD, NEWTON

