

**ROBERT
HALE
HOMES FOR
SALE**

Falcon House, Falcon Road,
Wisbech, Cambs. PE13 1AU

WISBECH

01945 465222

E-mail:

wisbech@robert-hale-homes.co.uk

Website:

www.robert-hale-homes.co.uk

7 DAYS

WISBECH 465222

MARCH 652785

NAEA NETWORK

OVER 1000 OFFICES



**CHARM BUNGALOW
81, HARECROFT ROAD
WISBECH, PE13 1RL**

THE PROPERTY:

VERY DECEPTIVE TWO BEDROOMED DETACHED BUNGALOW ON A GOOD SIZE PLOT IN A PRIVATE LANE WITH EASY ACCESS TO THE TOWN CENTRE AND SCHOOLS * 22FT LOUNGE * FITTED KITCHEN WITH BUILT IN OVEN & HOB * 23FT CONSERVATORY * 18FT GARAGE PLUS MULTI-VEHICLE OFF ROAD PARKING * GENEROUS ENCLOSED GARDENS TO REAR * GAS FIRED CENTRAL HEATING * MOSTLY DOUBLE GLAZED * VIEW QUICKLY!

THE PRICE:

£215,000

FREEHOLD EPC BAND D

REF.8829

SELLING? FREE, FREE, VALUATIONS!

For your own peace of mind, always have an independent survey,
and always test all systems and appliances!
Items displayed in photographs may not necessarily be included.



REF:8829 81, HARECROFT ROAD, WISBECH

COUNCIL TAX: BAND B FENLAND DISTRICT COUNCIL

HOW TO GET THERE: From the Wisbech town centre roundabout take the exit over Freedom Bridge signed Long Sutton/Sleaford. Follow the road and after 0.4 of a mile turn left into Harecroft Road. Turn fourth right into a small private road identified by a D & J.S Wilson sign at the top. It is the first bungalow on the left hand side.

THE ACCOMMODATION: (Dimensions given are approximate only)

ENTRANCE LOBBY:

SPACIOUS ENTRANCE HALL:

With built in airing cupboard housing gas fired wall mounted combi-boiler.

LOUNGE/DINER:

22' 10" (max) x 22' (max) 'L' shaped with reconstituted stone fire place enclosing an open fire.

FITTED KITCHEN:

8' 5" (max) With built in electric double oven, built in gas hob, range of wall cupboards, space/plumbing for washing machine and dishwasher, inset single drainer sink unit with mixer tap & cupboard under, preparation surfaces with drawers & cupboards under, built in larder cupboard.

CONSERVATORY:

23' 4" (max) x 6' 3" (max) With double glazed French doors to rear garden.

BATHROOM/W.C.:

With shower/bath with thermostatic shower, inset hand wash basin mixer tap & cupboards under, low level W.C., part tiled walls.

BEDROOM NO 1:

11' (max) x 10' 9" (max).

BEDROOM NO 2:

11' 9" (max) x 11' (max).

OUTSIDE:

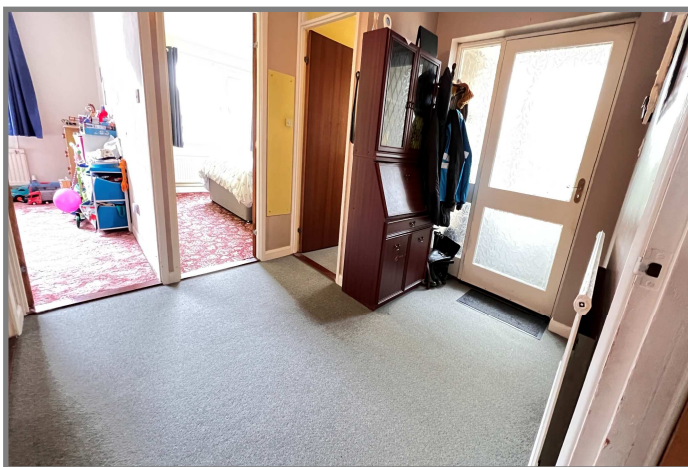
CAR PORT

GARAGE:

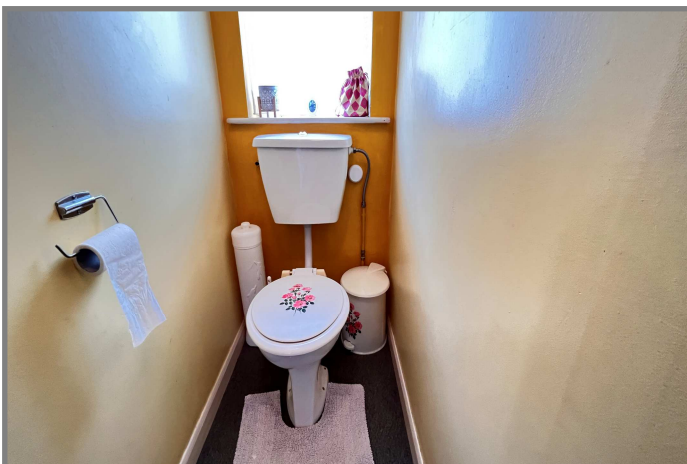
18' (max) x 9' (max) With up & over door, power & lighting, personal door.

GARDENS:

To front, down to a multi-vehicle off road parking space which extends along the side of the bungalow. Enclosed pathway to side leads to a timber gate opening on to the attractive enclosed rear garden which is laid to lawn with borders, shrubs and a paved patio.



REF:8829 81, HARECROFT ROAD, WISBECH



REF. 8829 CHARM BUNGALOW, 81, HARECROFT ROAD, WISBECH



Harecroft Rd

