

19 Greenford Avenue, Hanwell, London, W7 1LD
020 8567 3219



Freehold / House - End Terrace

137a, Empire Road
£580,000

Constructed in recent years (circa 2006) this spacious, three bedroom end terrace house is well located on a popular residential road close to the many amenities on Bilton Road.

- End Of Terrace
- Well Presented
- Two Reception Rooms
- Three Bedrooms
- Eat In Kitchen
- Two Bathrooms
- Gas Central Heating
- Double Glazing
- Shared Parking To The Rear



Freehold / House - End Terrace

Empire Road, UB6 7EZ

£580,000

This well presented end terrace house offers light and airy accommodation throughout featuring two reception rooms, a large and well fitted eat in kitchen with double patio doors to the garden plus a ground floor shower room with WC.

On the first floor are three bedrooms and a family bathroom with access from the landing to the loft.

Outside offers good size front garden, to the rear the sunny plot has a paved patio, flower borders and access at the rear to shared parking space

Well located on a popular residential road in the heart of Perivale, close to the local day to day shops, eateries and bus links on Bilton Road. With easy access to both Perivale and Alperton Stations and well regarded schools.

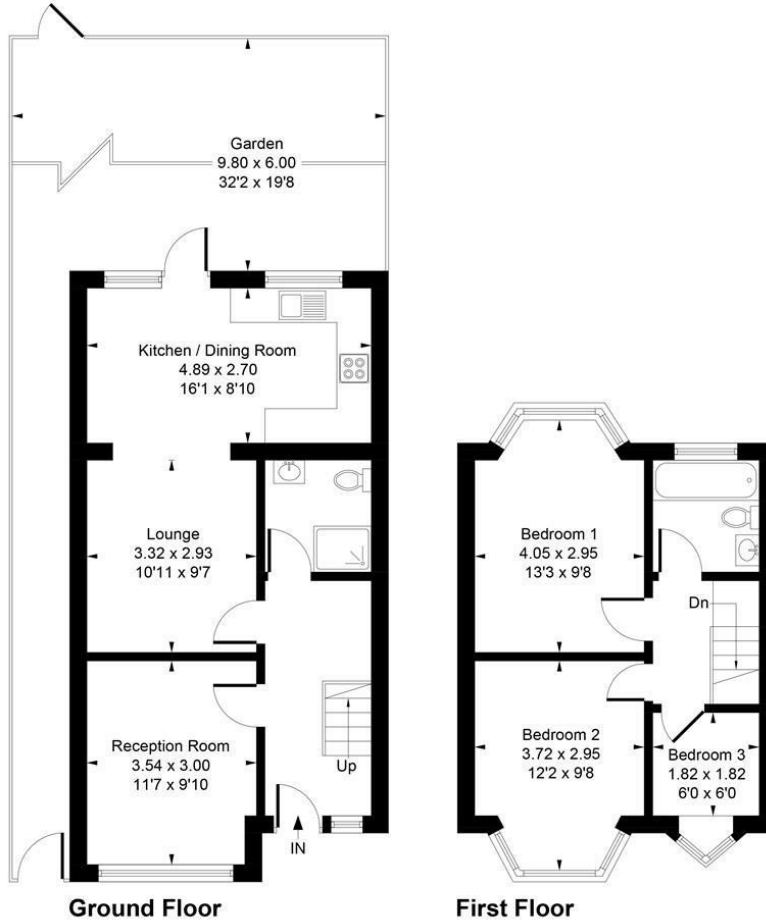


19 Greenford Avenue, Hanwell, London, W7 1LD
020 8567 3219



137A Empire Road, UB6 7EZ

Approximate Gross Internal Area
82.29 sq m / 886 sq ft

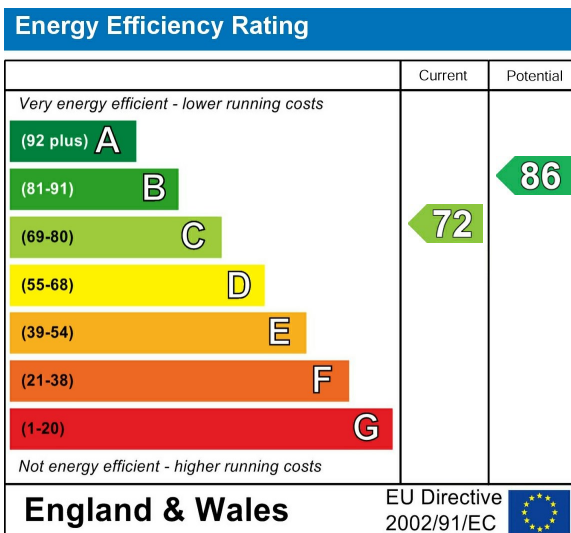


Whilst every attempt has been made to ensure the accuracy of the floor plan contained here, measurements of doors, windows, rooms and any other items are approximate and no responsibility is taken for any error, omission, or mis-statement.
This plan is for illustrative purposes only and should be used as such by any prospective purchaser.
Produced by jcphotographystudio.com

Council Tax Band

D

Energy Performance Graph



Call us on

020 8567 3219

hanwellsales@sintonandrews.co.uk

www.sintonandrews.co.uk

Agents Note: Whilst every care has been taken to prepare these particulars, they are for guidance purposes only. All measurements are approximate and are for general guidance purposes only and whilst every care has been taken to ensure their accuracy, they should not be relied upon and potential buyers are advised to recheck the measurements.