

19 Greenford Avenue, Hanwell, London, W7 1LD
020 8567 3219



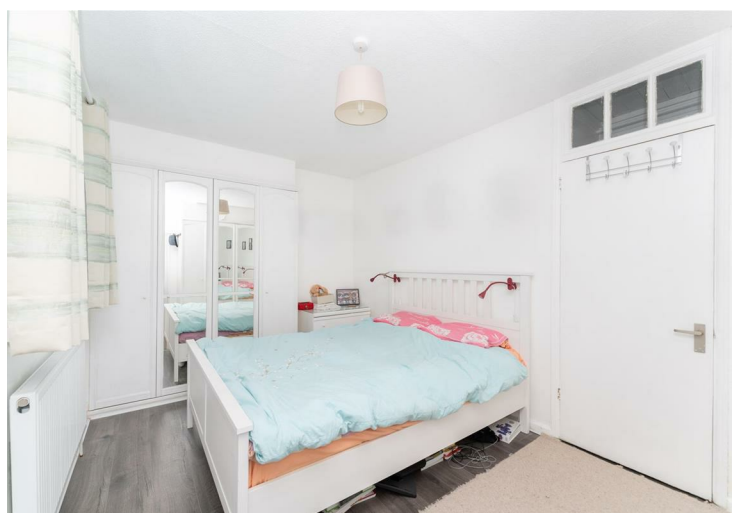
Freehold / House - Terraced

Templeman Road

£525,000

An exceptionally well presented two double bedroom 1930's terrace house in this ever popular location, within easy reach of Hanwell and West Ealing Elizabeth Line stations, with a good size garden and potential to extend.

- Off Street Parking
- Two Double Bedrooms
- New Roof
- Excellent Condition
- Recently Fitted Kitchen
- New Boiler
- New Flooring Throughout
- New Bathroom
- Good Size Rear Garden



Freehold / House - Terraced

Templeman Road, W7 1AS

£525,000

This two bedroom house has been fully upgraded by the current owners and benefits from a new roof. The light and airy accommodation includes an entrance hall, a large living area and a separate, newly fitted kitchen with a new combination boiler, on the first floor there are two double bedrooms and large, newly fitted bathroom. The property is exceptionally well presented in smart modern décor, with new flooring throughout, gas central heating and double glazing.

Outside is good size and well maintained rear garden plus valuable off street parking to the front. With potential to extend, this ready to move in property would, in our opinion make an ideal first time home.

Conveniently located on the popular 'Cuckoo Estate' within easy walking distance of Greenford Avenue which offers an array of local shops, eateries and regular bus services. Both Hanwell and West Ealing Elizabeth Line stations are close at hand along with Castlebar Park and Drayton Green rail station.

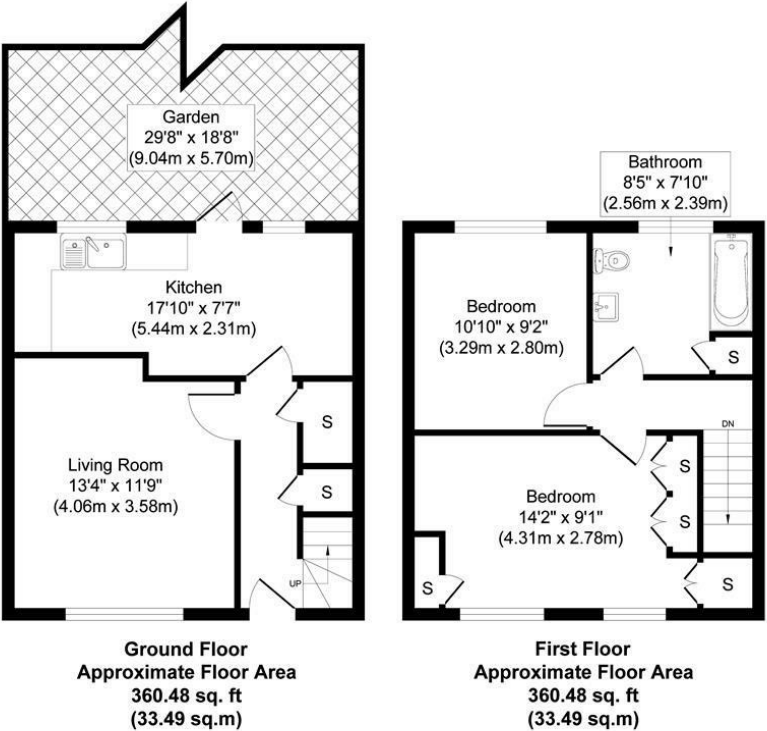
Falling within catchment for popular local schools, the green open spaces of Brent Lodge {Bunny} Park plus the golf course are also close at hand.



19 Greenford Avenue, Hanwell, London, W7 1LD
020 8567 3219



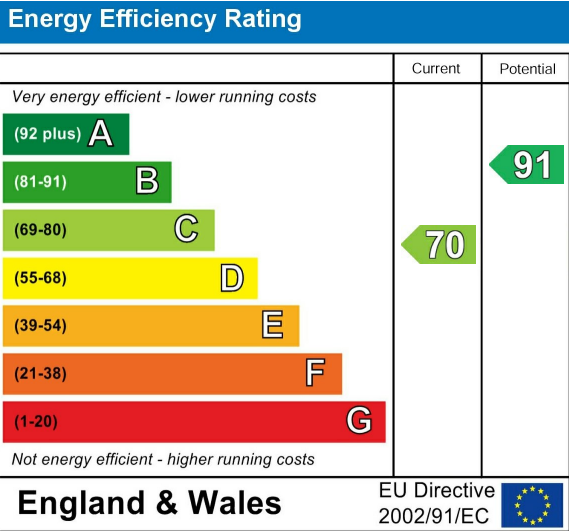
Templeman Rd W7 1AS



Council Tax Band

D

Energy Performance Graph



Call us on

020 8567 3219

hanwellsales@sintonandrews.co.uk
www.sintonandrews.co.uk

Agents Note: Whilst every care has been taken to prepare these particulars, they are for guidance purposes only. All measurements are approximate and are for general guidance purposes only and whilst every care has been taken to ensure their accuracy, they should not be relied upon and potential buyers are advised to recheck the measurements.