

19 Greenford Avenue, Hanwell, London, W7 1LD
020 8567 3219



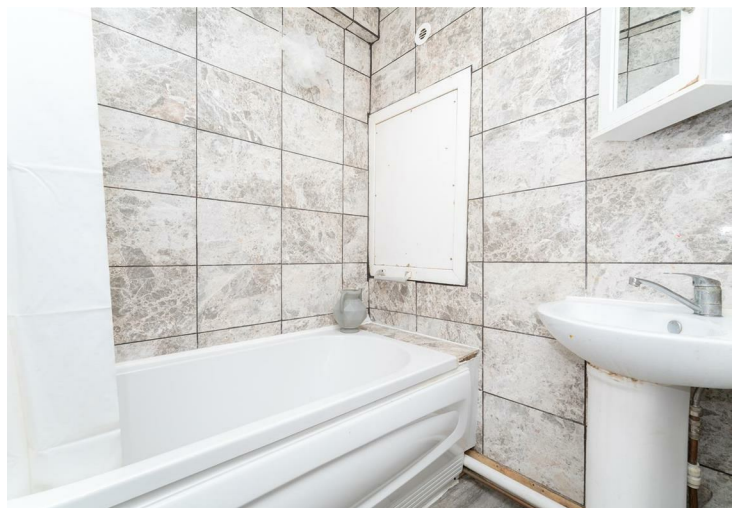
Leasehold / Apartment

176 Gloucester Court, Copley Close

£349,950

A keenly priced first floor apartment featuring two double bedrooms and within walking distance of Hanwell Elizabeth Line Station. Chain Free.

- Large First Floor Apartment
- Two Double Bedrooms
- Eat In Kitchen
- Gas Central Heating
- Double Glazing
- Communal Grounds
- Close To The Elizabeth Line
- Chain Free



Leasehold / Apartment

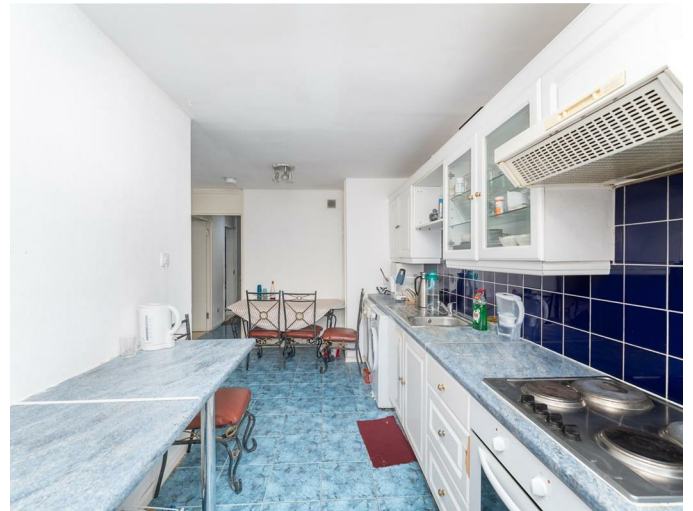
Copley Close, W7 1QA

£349,950

A two double bedroom flat situated on the first floor of this well established block. It features a light and airy living room, a large fitted eat in kitchen, two large bedrooms, bathroom and a separate WC.

With recently installed double glazing, gas fired central heating (heating and hot water are included in the service charge) plus a long lease, this well priced apartment would make an ideal first time buy.

Situated moments from Castlebar Station for easy access to Ealing Broadway plus with easy walking distance to Hanwell Elizabeth Line Station and regular bus services. Greenford Avenue has a good range of local day to day shops and eateries.

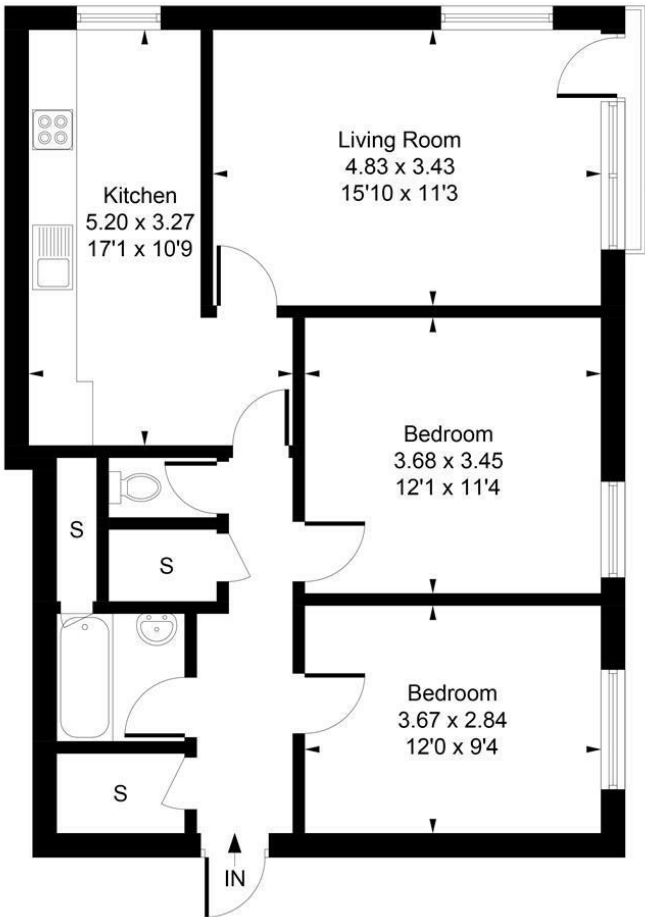


19 Greenford Avenue, Hanwell, London, W7 1LD
020 8567 3219



176 Gloucester Court, Copley Close, W7 1QA

Approximate Gross Internal Area
70.50 sq m / 759 sq ft

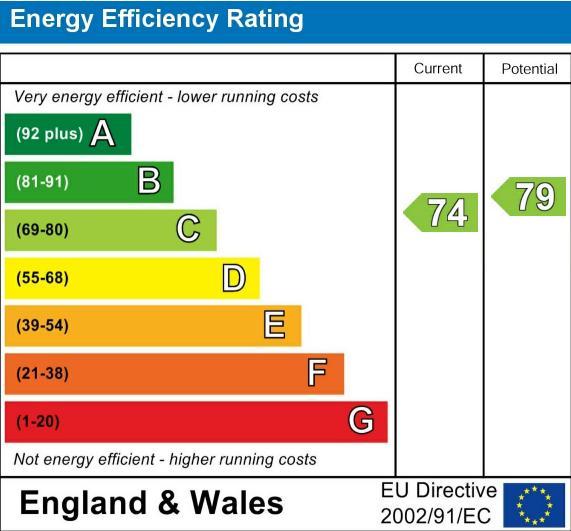


Whilst every attempt has been made to ensure the accuracy of the floor plan contained here, measurements of doors, windows, rooms and any other items are approximate and no responsibility is taken for any error, omission, or mis-statement.
This plan is for illustrative purposes only and should be used as such by any prospective purchaser.
Produced by jcphotographystudio.com

Council Tax Band

C

Energy Performance Graph



Call us on

020 8567 3219

hanwellsales@sintonandrews.co.uk

www.sintonandrews.co.uk

Agents Note: Whilst every care has been taken to prepare these particulars, they are for guidance purposes only. All measurements are approximate and are for general guidance purposes only and whilst every care has been taken to ensure their accuracy, they should not be relied upon and potential buyers are advised to recheck the measurements.