

19 Greenford Avenue, Hanwell, London, W7 1LD
020 8567 3219

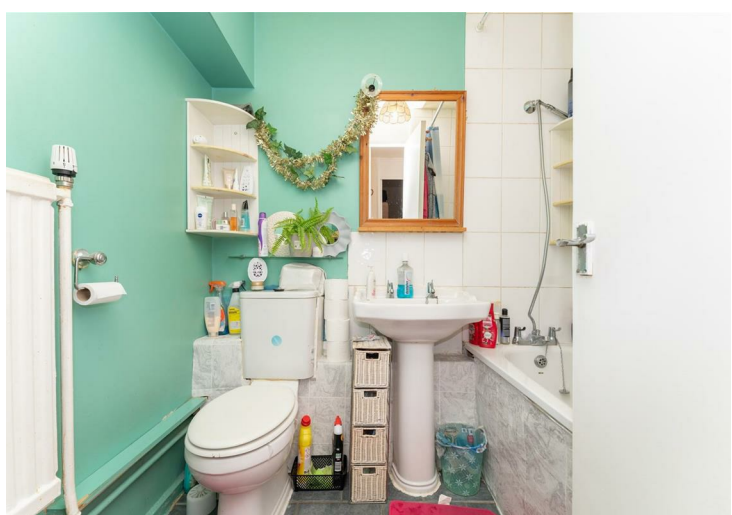


Leasehold / Apartment

177 Gloucester Court, Copley Close £240,000

A keenly priced first floor, purpose built apartment which is conveniently located for Castlebar Park and Hanwell Elizabeth Line Stations.

- Well Presented
- Gas Central Heating
- Double Glazing
- Seperate Kitchen
- Convenient Location
- Close To The Elizabeth Line
- Chain Free



Leasehold / Apartment

Copley Close, W7 1QA

£240,000

An exceptionally well presented first floor flat, with a bright double aspect living room, a separate well fitted kitchen, double bedroom and modern bathroom suite. The apartment is well presented throughout with neutral décor, laminate flooring, gas central heating and double glazing.

To the rear of this block are well tended communal grounds and parking to the front.

Situated moments from Castlebar Park Mainline station giving quick access to Ealing Broadway for both underground and Elizabeth Line connections. Nearby Greenford Avenue has many local bus connections and an array of day to day shops and eateries. Offered Chain Free this apartment offers an opportunity for a first time buyer or an investment.

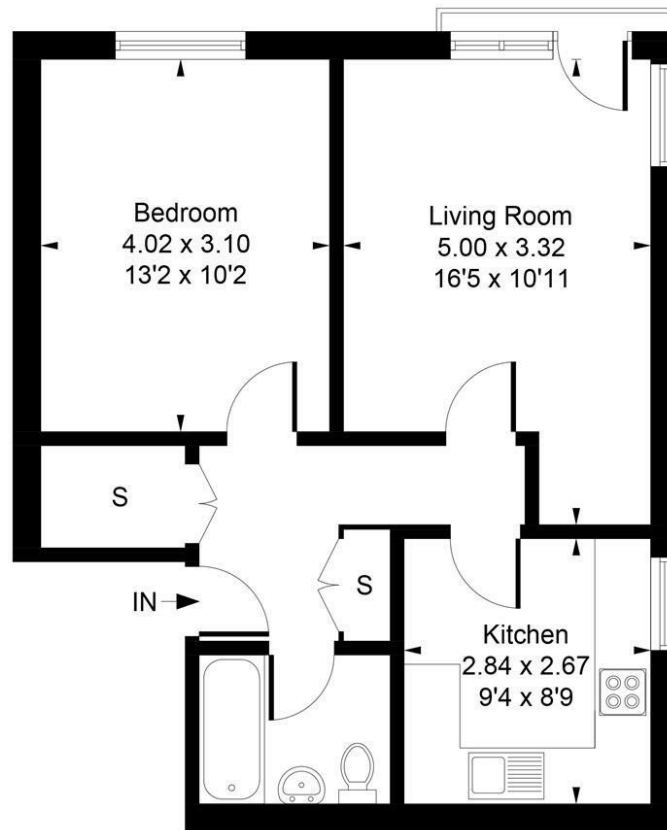


19 Greenford Avenue, Hanwell, London, W7 1LD
020 8567 3219



177 Gloucester Court, W7 1QA

Approximate Gross Internal Area
47.89 sq m / 515 sq ft

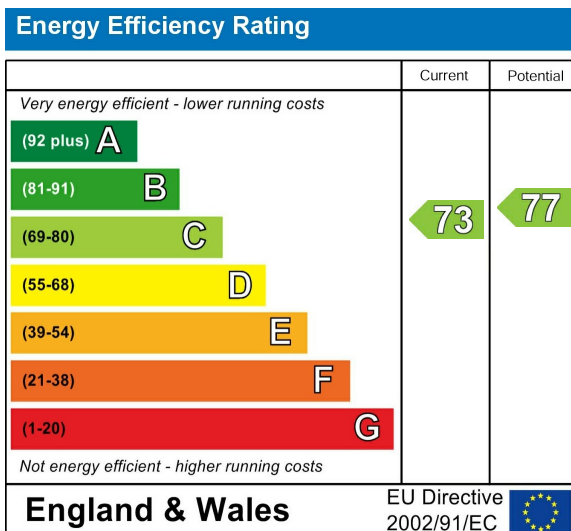


Whilst every attempt has been made to ensure the accuracy of the floor plan contained here, measurements of doors, windows, rooms and any other items are approximate and no responsibility is taken for any error, omission, or mis-statement. This plan is for illustrative purposes only and should be used as such by any prospective purchase.

Produced by jcphotographystudio.com

Council Tax Band

Energy Performance Graph



Call us on

020 8567 3219

hanwellsales@sintonandrews.co.uk

www.sintonandrews.co.uk

Agents Note: Whilst every care has been taken to prepare these particulars, they are for guidance purposes only. All measurements are approximate and are for general guidance purposes only and whilst every care has been taken to ensure their accuracy, they should not be relied upon and potential buyers are advised to recheck the measurements.