

19 Greenford Avenue, Hanwell, London, W7 1LD
020 8567 3219



Freehold / House - Terraced

39, Lee Road
£549,950

An extended two bedroom, two shower room terraced house which is well located close to the plentiful local amenities,

- Two Bedrooms
- Two Shower Rooms
- Open Plan Kitchen/Family Room
- Separate Reception Room
- Gas Central Heating
- Double Glazing
- Easy Access To Perivale Central Line
- Off Street Parking
- Chain Free



Freehold / House - Terraced

Lee Road, UB6 7BS

£549,950

This property has been renovated and extended in recent years, now offering a spacious, open plan family room, with a well fitted kitchen, plus a large reception/dining zone. There is a separate reception room, plus a ground floor shower room and a separate cloakroom with WC.

On the first floor are two double bedrooms, a well fitted shower room, with access from the landing to the loft.

Outside the property is approached via the block paved driveway with a valuable parking space, to the rear is a private garden mainly laid to lawn, with a raised patio area and two sheds.

Situated on this popular residential road in the heart of Perivale, offering an array of day to day shops and eateries plus many local bus routes. Also within easy access for Tesco's supermarket and Perivale Central Line station which offers easy access into Central London.

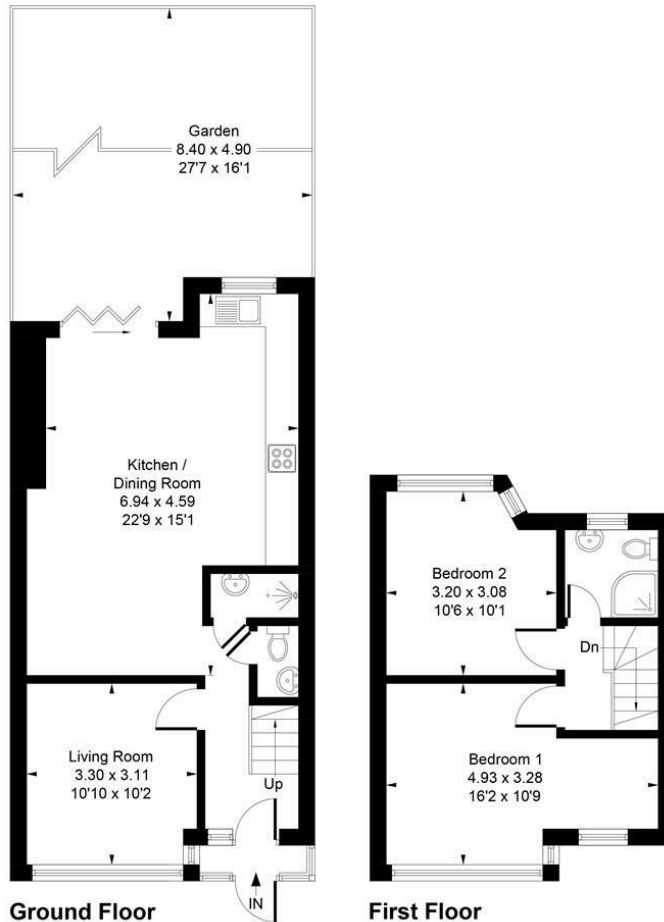


19 Greenford Avenue, Hanwell, London, W7 1LD
020 8567 3219



39 Lee Road, UB6 7BS

Approximate Gross Internal Area
79.07 sq m / 851 sq ft

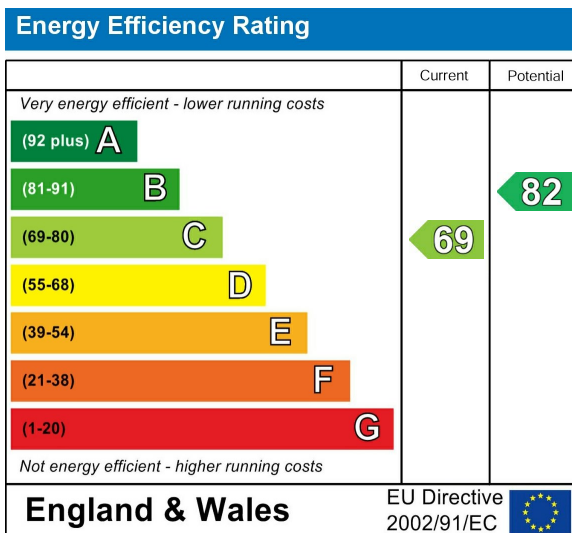


Whilst every attempt has been made to ensure the accuracy of the floor plan contained here, measurements of doors, windows, rooms and any other items are approximate and no responsibility is taken for any error, omission, or mis-statement. This plan is for illustrative purposes only and should be used as such by any prospective purchaser.
Produced by jcphotographystudio.com

Council Tax Band

D

Energy Performance Graph



Call us on

020 8567 3219

hanwellsales@sintonandrews.co.uk

www.sintonandrews.co.uk

Agents Note: Whilst every care has been taken to prepare these particulars, they are for guidance purposes only. All measurements are approximate and are for general guidance purposes only and whilst every care has been taken to ensure their accuracy, they should not be relied upon and potential buyers are advised to recheck the measurements.