



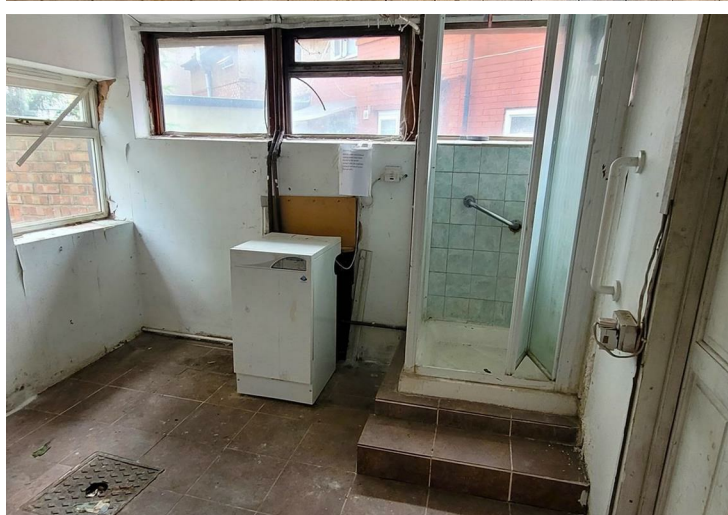
**Freehold / House - End Terrace**

**73, Argyll Avenue**

**£550,000**

An opportunity to acquire this end terraced 1930's period family house, with valuable side garage and off street parking, requiring modernisation and offered chain free

- End terraced 1930s house
- 2 reception rooms
- 3 bedrooms
- Ground floor wc and shower
- Utility/shower room
- Bathroom/seperate wc
- Valuable side garage
- Off street parking
- D/G & GCH (untested)
- Potential for extension



**Freehold / House - End Terrace**

**Argyll Avenue, UB1 3AT**

**£550,000**

A rare opportunity to acquire this 1930's built end terraced family home with valuable side garage and off street parking, now in need of a thorough programme of modernisation and offering much scope for extension. Attractively offered chain free.

Situated in this quiet residential road, within easy access of the Uxbridge Rd with speedy bus services to Hanwell and Ealing, the green open spaces of Southall park and town centre, with a variety of shops and restaurants and Elizabeth Line station.



19 Greenford Avenue, Hanwell, London, W7 1LD  
020 8567 3219



**Argyll Avenue, Southall, UB1 3AT**



**Ground Floor**  
Approximate Floor Area  
739.00 sq.ft  
(68.69 sq.m)

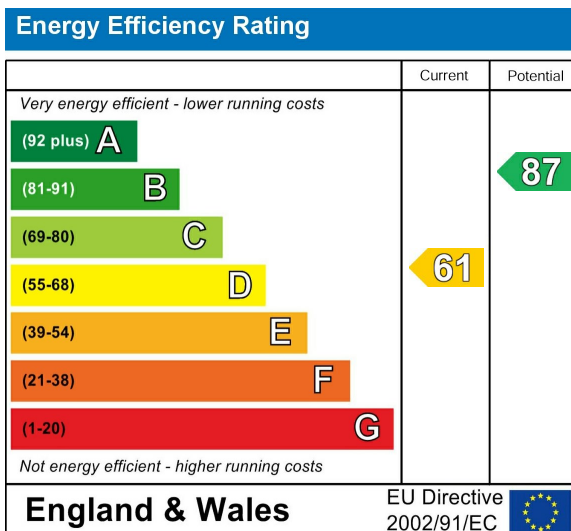
**First Floor**  
Approximate Floor Area  
464.00 sq.ft  
(43.06 sq.m)

**Approximate Gross Internal Floor Area 1203 sq. ft / 111.75 sq. m**  
 Illustration for identification purposes only, measurements are approximate, not to scale.  
 produced by jcphtographystudio.com

Council Tax Band

**E**

Energy Performance Graph



**Call us on**

**020 8567 3219**

**hanwellsales@sintonandrews.co.uk**

**www.sintonandrews.co.uk**

Agents Note: Whilst every care has been taken to prepare these particulars, they are for guidance purposes only. All measurements are approximate and are for general guidance purposes only and whilst every care has been taken to ensure their accuracy, they should not be relied upon and potential buyers are advised to recheck the measurements.