



Leasehold / Apartment

5 High Trees Court, Manor Court Road

A bright, spacious first floor, two bedroom apartment benefiting from gated off street parking plus the valuable bonus of a garage, in an exceptional location close to The Bunny Park and Hanwell Elizabeth Line Station. Chain Free.

- Two Bedrooms
- Gated Off Street Parking
- Garage
- Newly Fitted Kitchen
- New Shower Room
- Well Tended Grounds
- Fabulous Location
- Close to Elizabeth Line
- Chain Free
- Long Lease



Leasehold / Apartment

Manor Court Road, W7 3HD

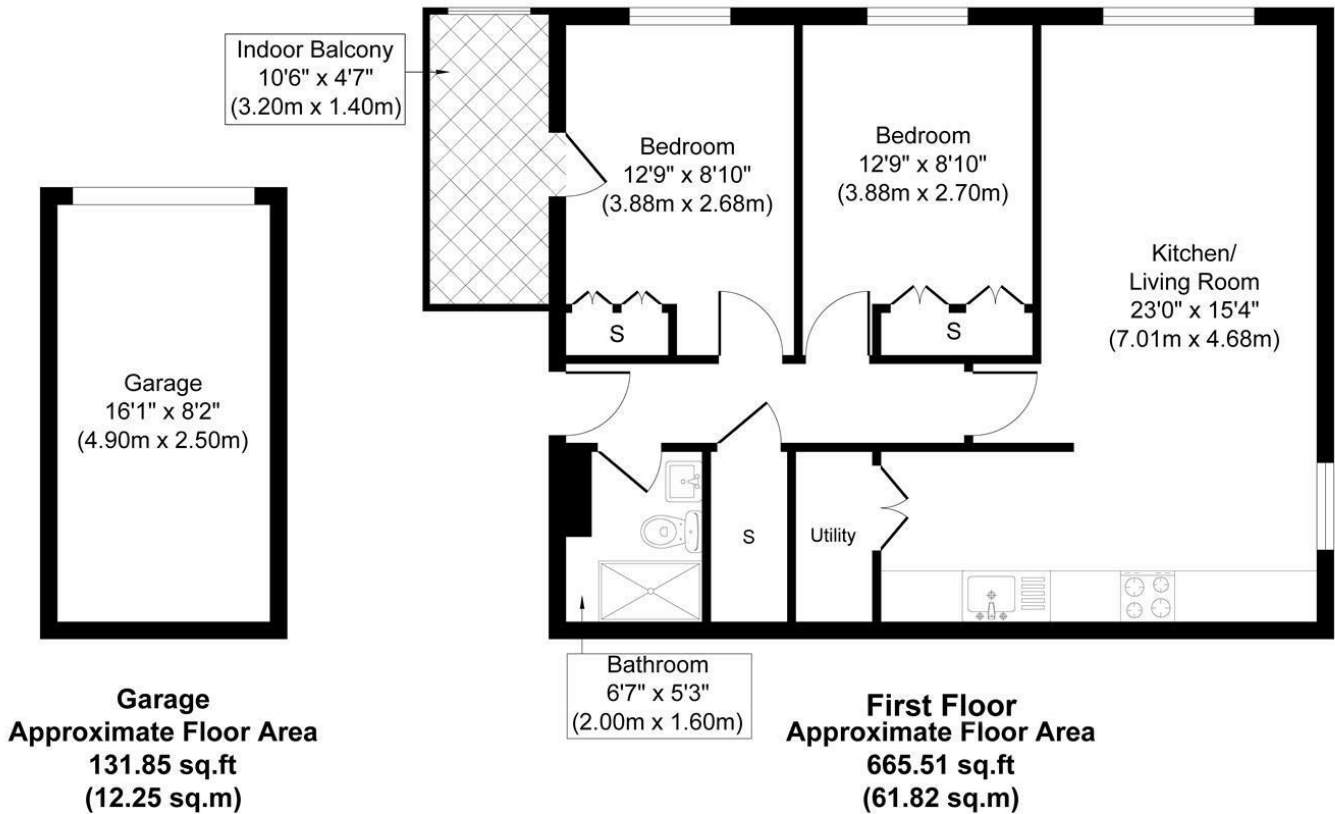
£440,000

Situated on the first floor, this spacious purpose built apartment is enviably located in sought after Golden Manor and enjoys the benefits of a large, well tended grounds, gated off street parking plus the added bonus of a garage. Featuring a spacious open plan reception room with a newly fitted kitchen zone and a separate utility cupboard, a newly fitted walk in shower room, two good size bedrooms plus a sun room which could be used as an office or walk in wardrobe. Well presented throughout, it has full double glazing and gas central heating. With the security of a long lease and attractively offered chain free.

Peacefully situated in quiet, leafy position on Manor Court Road in sought after Hanwell Village moments from the open spaces of Churchfields and Brent Lodge (Bunny) Park. Within a short walk of Hanwell Elizabeth Line station, offering swift access to Central London and Heathrow, with shops and amenities close at hand on Greenford Avenue.



5 High Trees Court W7



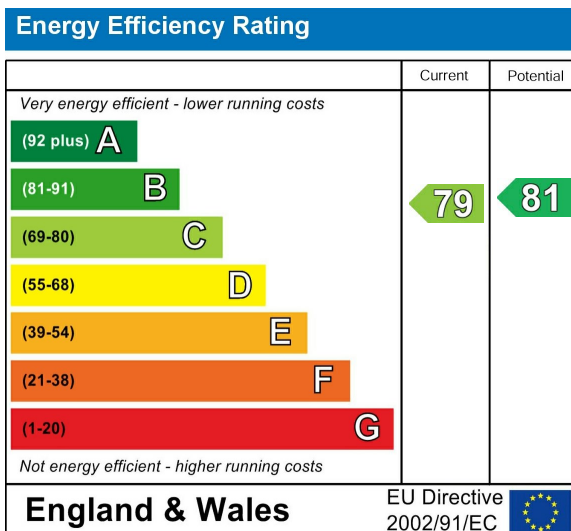
Approximate Gross Internal Floor Area 797 sq. ft / 74.0 sq. m

Illustration for identification purposes only, measurements are approximate, not to scale.
produced by jcphotographystudio.com

Council Tax Band

D

Energy Performance Graph



Call us on

020 8567 3219

hanwellsales@sintonandrews.co.uk

www.sintonandrews.co.uk

Agents Note: Whilst every care has been taken to prepare these particulars, they are for guidance purposes only. All measurements are approximate and are for general guidance purposes only and whilst every care has been taken to ensure their accuracy, they should not be relied upon and potential buyers are advised to recheck the measurements.