

19 Greenford Avenue, Hanwell, London, W7 1LD
020 8567 3219



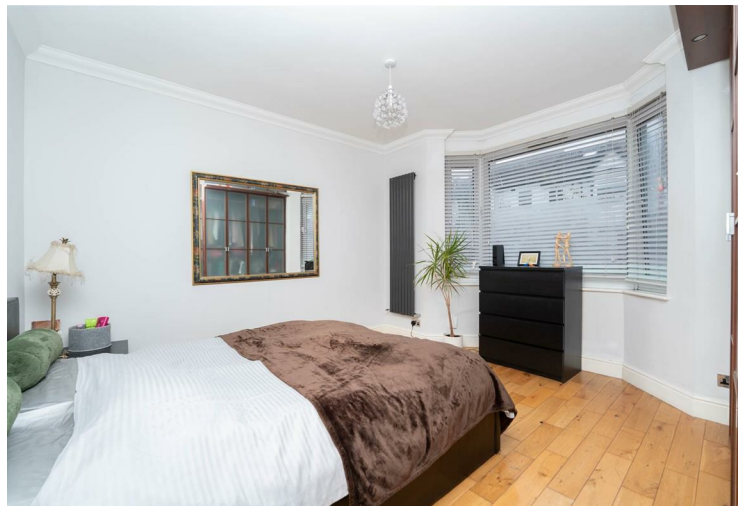
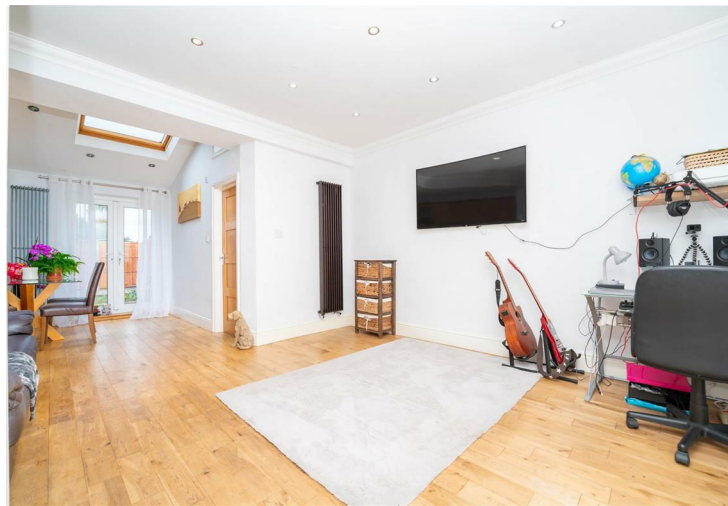
Freehold / House - End Terrace

75, Drayton Bridge Road

£725,000

A good size, four bedroom, three bathroom end of terrace house, currently arranged as two flats offering an excellent investment opportunity, alternatively it could easily be reinstated to provide a spacious family home.

- Fully Extended
- End of Terrace
- Four Bedrooms
- Two Reception Rooms
- Three Bathrooms
- Gas Central Heating
- Backing Framfield Allotments
- Over 1501 Sq. ft



Freehold / House - End Terrace

Drayton Bridge Road, W7 1ER

£725,000

This exceptionally spacious property has been extended to the rear and into the loft. Currently arranged as two flats, on the ground floor is a large kitchen dining room, a reception room and modern bathroom suite with a bedroom at the front. On the first floor are four bedrooms (one with a kitchen) a shower room and stairs up to the loft conversion with a full bathroom suite and open green views over Framfield allotments. Outside is a good size rear garden with side access.

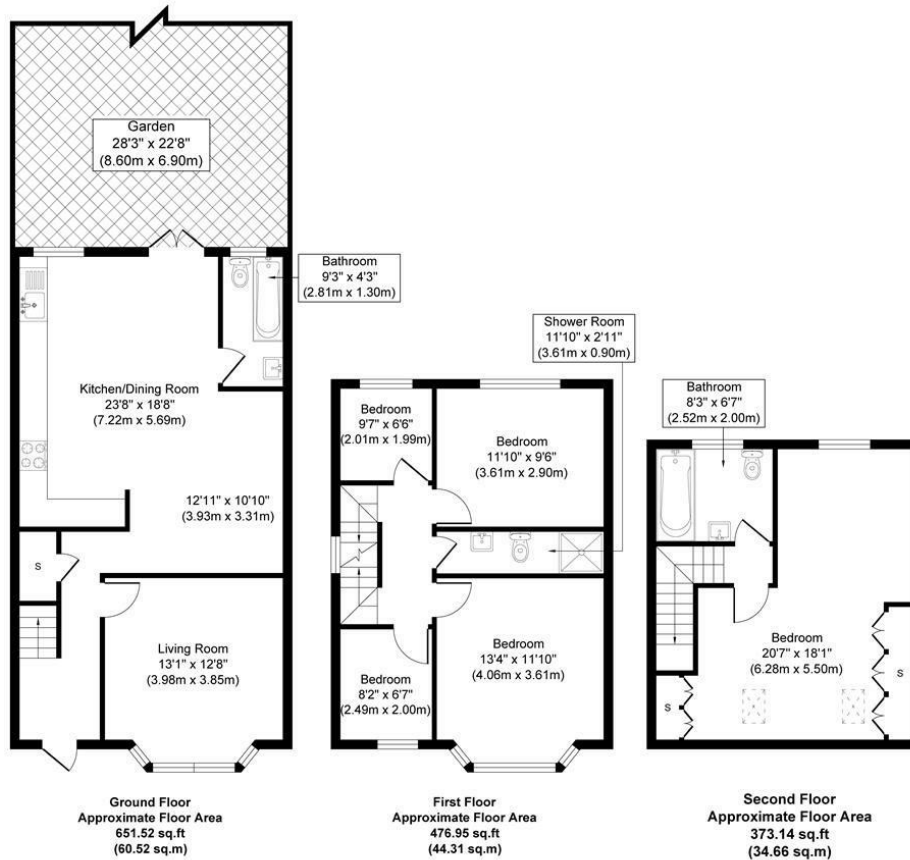
Conveniently situated on this wide tree lined road, on the fringes of 'Poets Corner'. Well placed for regular bus services and within a few minutes walk of Hanwell Elizabeth Line Station. The area is served by well regarded schools, a good range of local shops and eateries and the green open spaces of Brent Valley (Bunny) Park and golf course.



19 Greenford Avenue, Hanwell, London, W7 1LD
020 8567 3219



75 Drayton Bridge Road W7 1ER

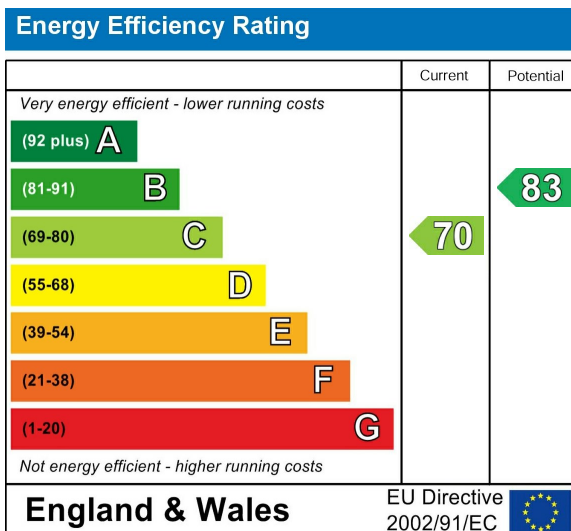


Approximate Gross Internal Floor Area 1501.61 sq. ft / 139.50 sq. m
Illustration for identification purposes only, measurements are approximate, not to scale.
produced by jcphotographystudio.com

Council Tax Band

D

Energy Performance Graph



Call us on

020 8567 3219

hanwellsales@sintonandrews.co.uk

www.sintonandrews.co.uk

Agents Note: Whilst every care has been taken to prepare these particulars, they are for guidance purposes only. All measurements are approximate and are for general guidance purposes only and whilst every care has been taken to ensure their accuracy, they should not be relied upon and potential buyers are advised to recheck the measurements.