

84 Northfield Avenue, London, W13 9RR

020 8840 5151



**Leasehold / Apartment**

**Elers Road**

**£525,000**

Situated in a highly desirable location - this first floor, two bedroom flat is offered to the market with valuable off road parking, no onward chain and a long lease.

- Long lease
- Off-street parking
- No onward chain
- Close to excellent local schools, shops and transport links





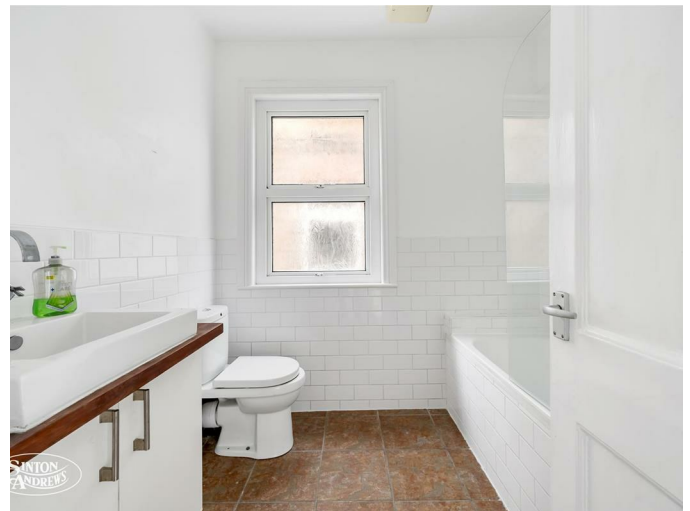
**Leasehold / Apartment**

**Elers Road, W13 9QB**

**£525,000**

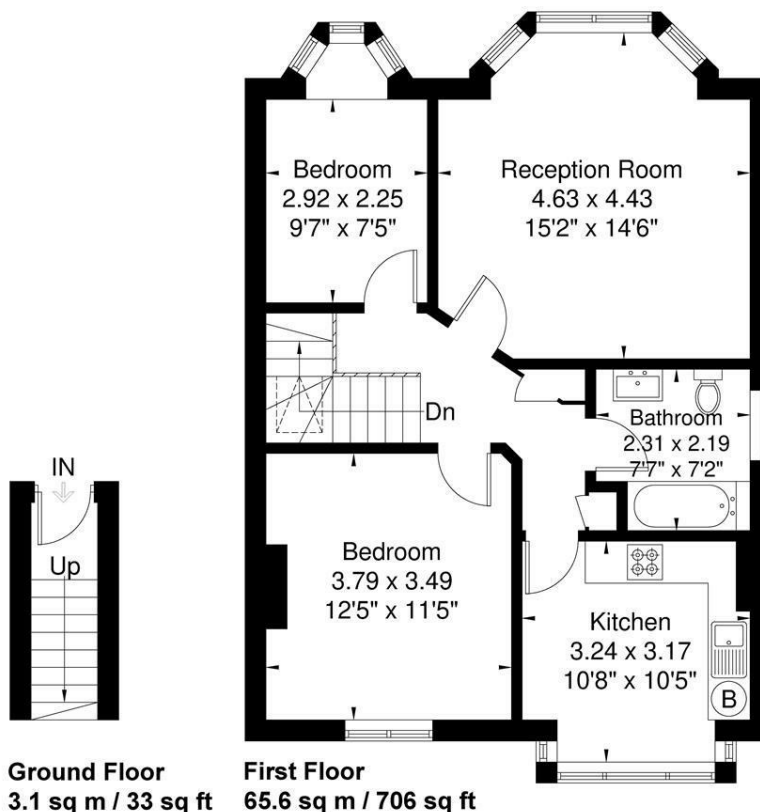
This bright and spacious apartment benefits from two generous bedrooms, large reception room, separate fitted kitchen and family bathroom. The property is attractively offered to the market with off street parking, no onward chain and long lease.

As well as being close to both Lammas and Walpole Parks, the shops, restaurants and Piccadilly Line station on Northfield Avenue are close by along with West Ealing Elizabeth Line station which is a short stroll away. Outstanding local schools include Fielding, Little Ealing and Mount Carmel Primary and Ealing Fields High Schools. Ealing Broadway with it's array of shops and excellent transport links is also within easy reach.



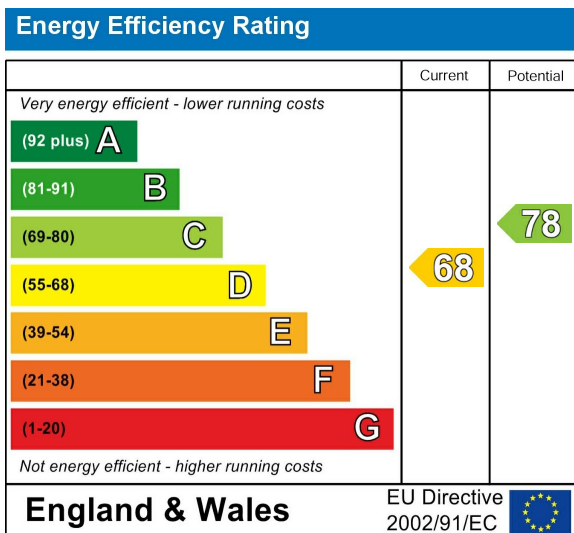
**Elers Road**

Approximate Gross Internal Area = 68.7 sq m / 739 sq ft



Although every attempt has been made to ensure accuracy, all measurements are approximate. The floorplan is for illustrative purposes only and not to scale.  
© www.perspective.co.uk

**Energy Performance Graph**



**Call us on**

**020 8840 5151**

**northfieldsales@sintonandrews.co.uk**  
**www.sintonandrews.co.uk**

Agents Note: Whilst every care has been taken to prepare these particulars, they are for guidance purposes only. All measurements are approximate and are for general guidance purposes only and whilst every care has been taken to ensure their accuracy, they should not be relied upon and potential buyers are advised to recheck the measurements.