

84 Northfield Avenue, London, W13 9RR

020 8840 5151



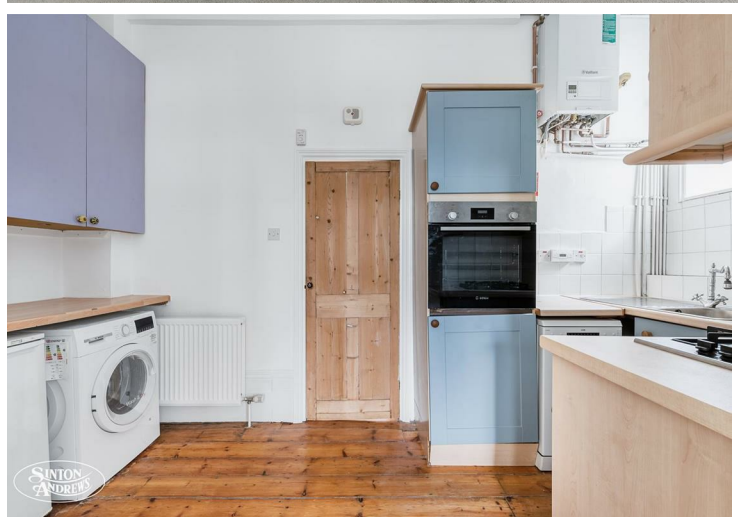
Share of Freehold / Apartment

Churchfield Road

£350,000

A unique one bedroom raised ground floor apartment set in this imposing Victorian conversion offered with a Share of Freehold and no onward chain.

- Share of freehold
- No onward chain
- Period features
- Close to Elizabeth and Piccadilly Line stations
- Moments from Lammas + Walpole parks
- Communal gardens



Share of Freehold / Apartment

Churchfield Road, W13 9NG

£350,000

With its high ceilings, original features and a beautiful fireplace, this impressive apartment is awash with character and period charm.

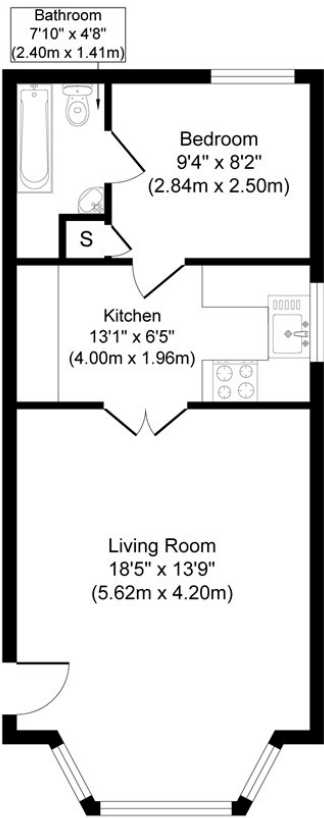
The property boasts a massive reception room to the front, with large sash windows flooding the room with light. The feature arch with stain glass doors leads into the kitchen with the bedrooms and bathroom located at the rear of the property. Outside there's a very well kept and pretty communal garden.

The apartment will be sold with a share of the freehold and no onward chain.

Churchfield Road is a popular and wide tree-lined residential street, well placed between Lammas and Walpole parks and an abundance of local shops and restaurants. Positioned conveniently within a mile of the main Town Centre of Ealing Broadway with its underground and mainline stations, West Ealing Elizabeth Line, Northfields and South Ealing Piccadilly Line make it an ideal location for commuters and families alike.

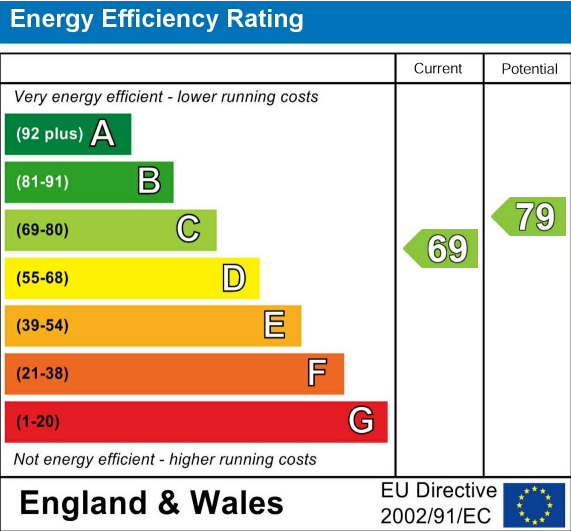


2C Churchfield Road, W13 9NG



Approximate Gross Internal Floor Area 446.89 sq. ft / 41.51 sq. m
Illustration for identification purposes only, measurements are approximate, not to scale.
produced by jcphotographystudio.com

Energy Performance Graph



Call us on

020 8840 5151

northfieldsales@sintonandrews.co.uk

www.sintonandrews.co.uk

Agents Note: Whilst every care has been taken to prepare these particulars, they are for guidance purposes only. All measurements are approximate and are for general guidance purposes only and whilst every care has been taken to ensure their accuracy, they should not be relied upon and potential buyers are advised to recheck the measurements.