

84 Northfield Avenue, London, W13 9RR

020 8840 5151



Freehold / House - End Terrace

Coningsby Cottages

£675,000

A charming two bedroom end of terrace Victorian cottage tucked away in a highly desirable location, moments from Lammas and Walpole parks.

- Two bedrooms
- Secluded South-West facing garden
- No onward chain
- Requiring some updating
- Close to Piccadilly Line station
- Moments from Lammas Park + local schools



Freehold / House - End Terrace

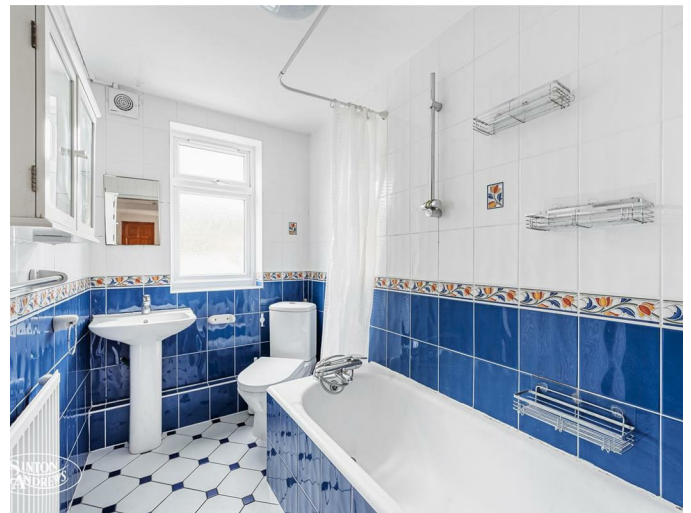
Coningsby Cottages, W5 4HW

£675,000

This two bedroom Victorian end of terrace cottage is tucked away just off Coningsby Road in a peaceful and tranquil cul-de-sac, yet moments from South Ealing Piccadilly Line station.

This end of terrace period cottage is arranged over two floors. The ground floor features a well-proportioned living room, a separate kitchen and family bathroom. Upstairs, there are two double bedrooms and access to the loft space. Although the property has been well maintained, it would now benefit from some updating.

Coningsby Cottages is located in an extremely convenient location, moments from South Ealing Piccadilly Line station and within easy access to the Elizabeth, Central and District Lines at Ealing Broadway, the property is ideally placed for commuting.



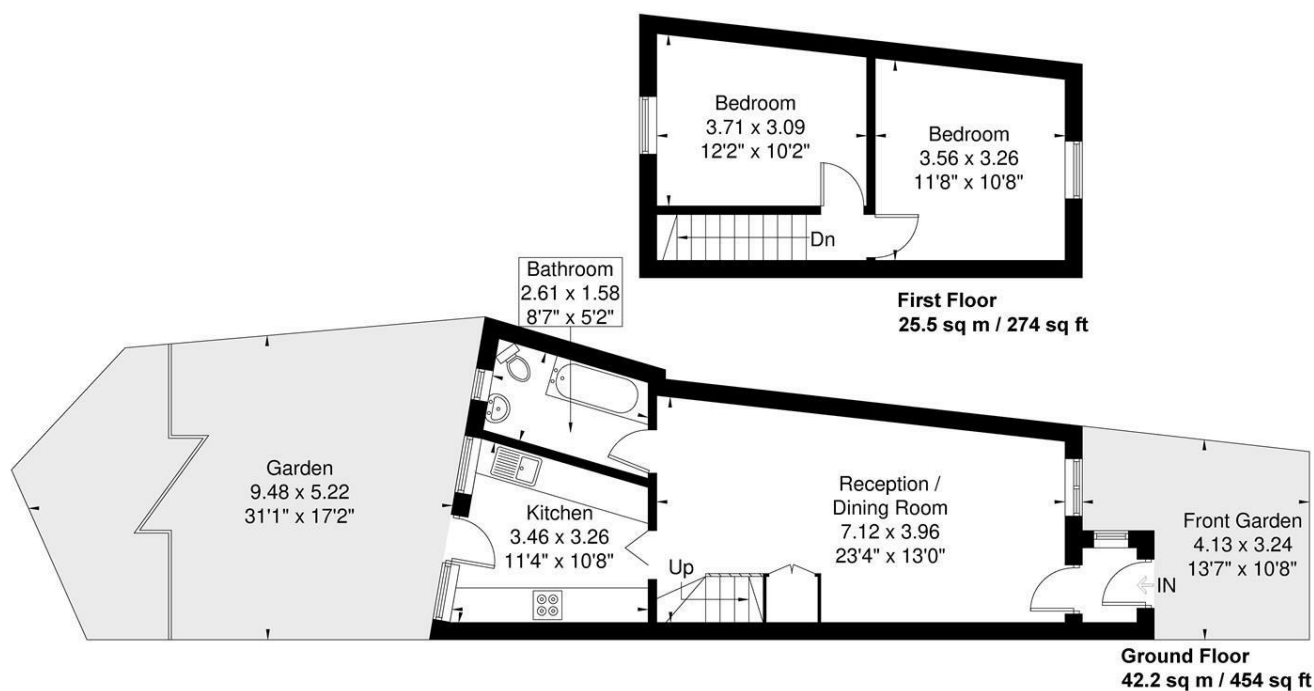
84 Northfield Avenue, London, W13 9RR

020 8840 5151



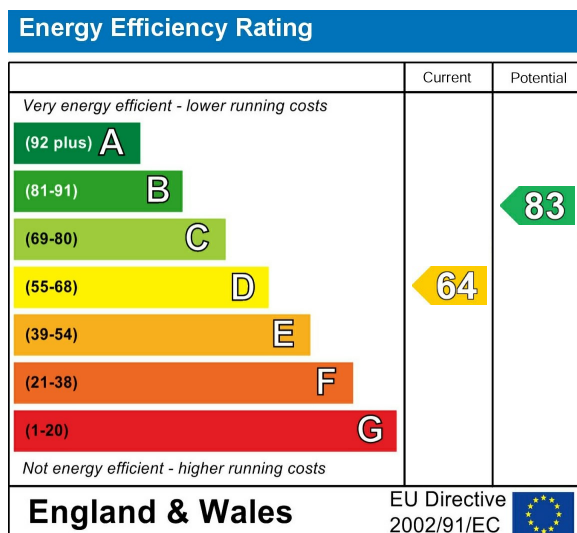
Coningsham Cottages

Approximate Gross Internal Area = 67.7 sq m / 728 sq ft



Although every attempt has been made to ensure accuracy, all measurements are approximate. The floorplan is for illustrative purposes only and not to scale.
© www.perspective.co.uk

Energy Performance Graph



Call us on

020 8840 5151

northfieldsales@sintonandrews.co.uk
www.sintonandrews.co.uk

Agents Note: Whilst every care has been taken to prepare these particulars, they are for guidance purposes only. All measurements are approximate and are for general guidance purposes only and whilst every care has been taken to ensure their accuracy, they should not be relied upon and potential buyers are advised to recheck the measurements.