

84 Northfield Avenue, London, W13 9RR

020 8840 5151



Leasehold / Apartment

Seaford Road

£485,000

A super two bedroom period conversion presented in excellent condition throughout with direct access to a private garden and offered with no onward chain.

- Two bedrooms
- Private garden
- Excellent condition throughout
- No onward chain
- Close to Elizabeth and Piccadilly Line stations



Leasehold / Apartment

Seaford Road, W13 9HS

£485,000

This well proportioned 2 bedroom period conversion is offered in excellent condition throughout. It comprises a bright and airy, good size front reception room, two bedrooms, a modern fitted kitchen, a modern bathroom and a very useful utility area which leads directly to the rear garden.

Seaford Road is perfectly placed between Northfield Avenue and West Ealing Broadway with their busy shops, cafe bars and eateries. Close by are West Ealing Elizabeth Line and Northfields Piccadilly Line stations as well as Ealing Broadway Shopping Centre. Lovely local parks include Walpole and Lammas parks.

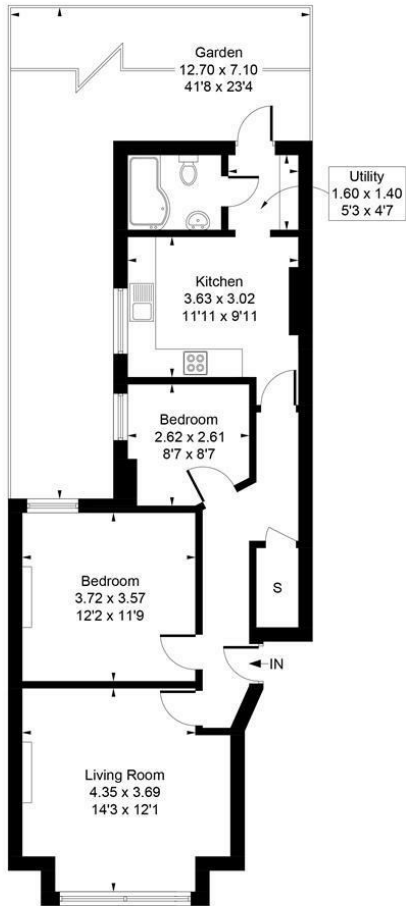


84 Northfield Avenue, London, W13 9RR
020 8840 5151



89 Seaford Road, London, W13 9HU

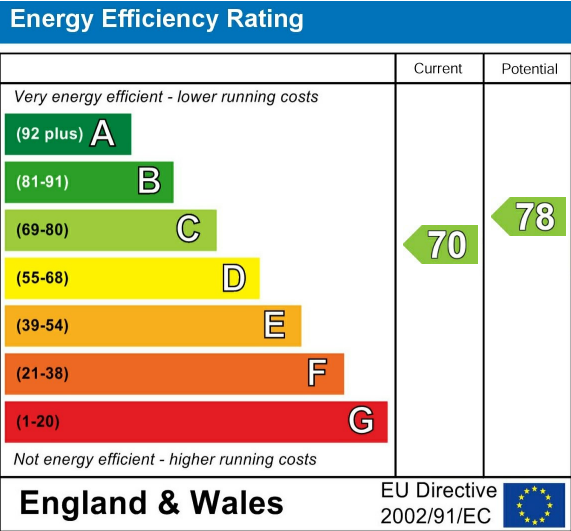
Approximate Gross Internal Area
67.45 sq m / 726 sq ft



Ground Floor

Whilst every attempt has been made to ensure the accuracy of the floor plan contained here, measurements of doors, windows, rooms and any other items are approximate and no responsibility is taken for any error, omission, or mis-statement.
This plan is for illustrative purposes only and should be used as such by any prospective purchaser.
Produced by jcphotographystudio.com

Energy Performance Graph



Call us on

020 8840 5151

northfieldsales@sintonandrews.co.uk

www.sintonandrews.co.uk

Agents Note: Whilst every care has been taken to prepare these particulars, they are for guidance purposes only. All measurements are approximate and are for general guidance purposes only and whilst every care has been taken to ensure their accuracy, they should not be relied upon and potential buyers are advised to recheck the measurements.