

84 Northfield Avenue, London, W13 9RR

020 8840 5151



Share of Freehold / Apartment

Burnham Way

£475,000

A fabulous larger than average two double bedroom, two bathroom maisonette offered with valuable off road parking and no onward chain

- Two double bedrooms, two bathrooms
- Own private entrance
- Off street parking
- No onward chain
- Close to transport links



Share of Freehold / Apartment

Burnham Way, W13 9YB

£475,000

Offering in excess 850 sq.ft this bright and spacious apartment is arranged over two floors and consists of an open plan lounge/kitchen/dining area, two double bedrooms one with an en-suite and a family bathroom. Benefitting from it's own entrance, valuable off road parking and no onward chain this property is an ideal choice for a first time buyer or investment opportunity.

Burnham Way is a tree lined residential road, well placed for the shopping parades, café bars and restaurants on Northfield Avenue and Boston Manor. Also within easy reach of both Northfield and Boston Manor Piccadilly Line stations and outstanding local Primary and Secondary schools.



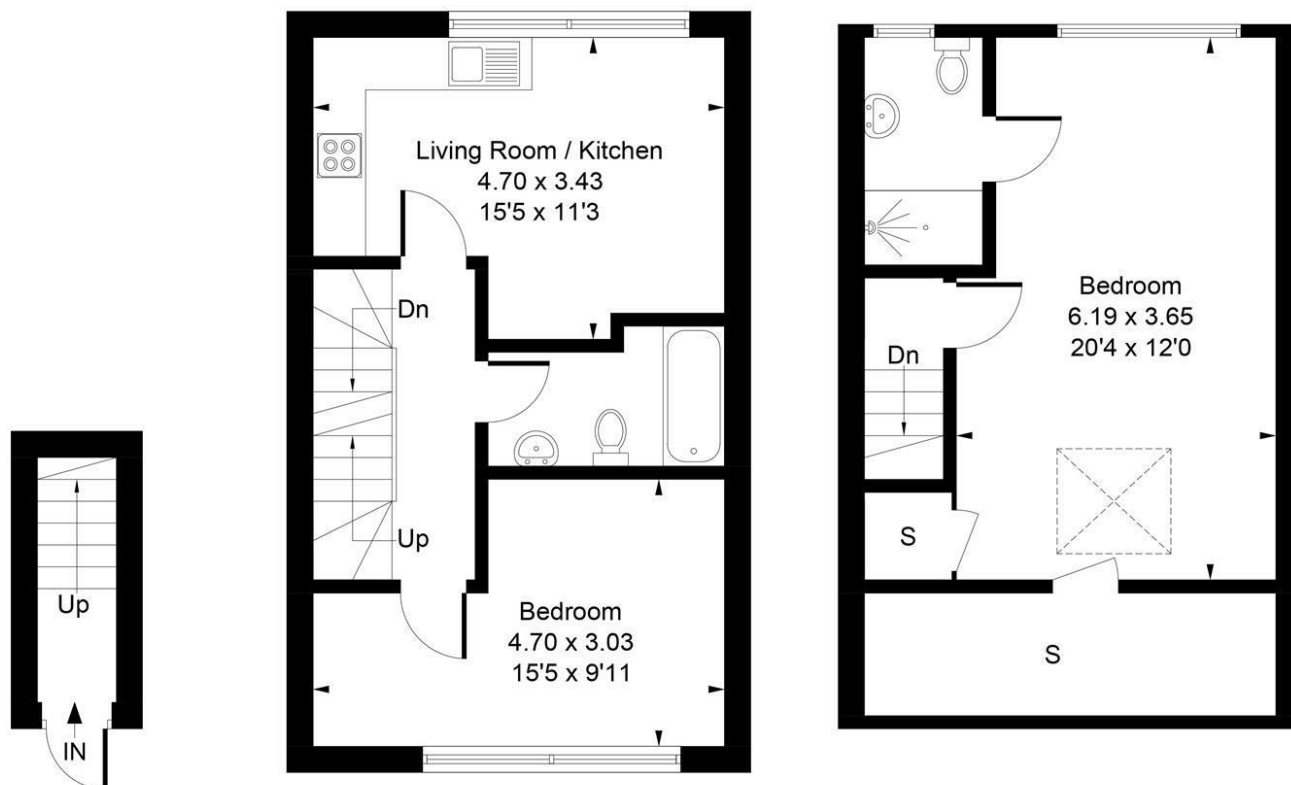
84 Northfield Avenue, London, W13 9RR

020 8840 5151



Flat B, 93 Burnham Way, W13 9YB

Approximate Gross Internal Area
77.17 sq m / 831 sq ft



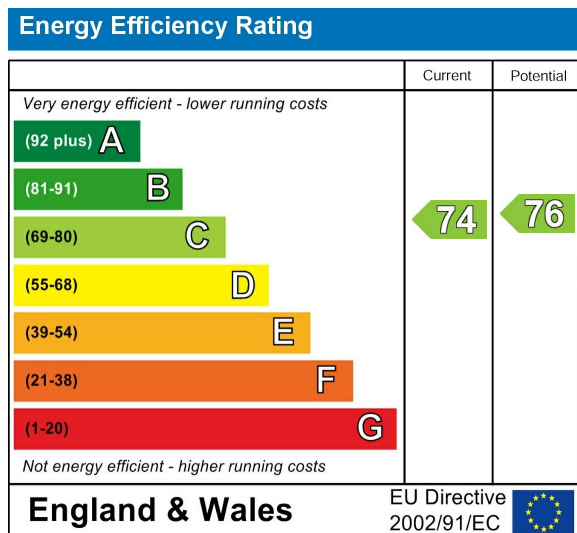
Ground Floor First Floor

Second Floor

Whilst every attempt has been made to ensure the accuracy of the floor plan contained here, measurements of doors, windows, rooms and any other items are approximate and no responsibility is taken for any error, omission, or mis-statement. This plan is for illustrative purposes only and should be used as such by any prospective purchase.

Produced by jcphotographystudio.com

Energy Performance Graph



Call us on

020 8840 5151

northfieldsales@sintonandrews.co.uk

www.sintonandrews.co.uk

Agents Note: Whilst every care has been taken to prepare these particulars, they are for guidance purposes only. All measurements are approximate and are for general guidance purposes only and whilst every care has been taken to ensure their accuracy, they should not be relied upon and potential buyers are advised to recheck the measurements.