

84 Northfield Avenue, London, W13 9RR

020 8840 5151



Freehold / House - Semi-Detached

Mayfield Avenue

£830,000

Moments from Fielding Primary School, this Edwardian semi-detached house offers good room sizes, a South facing garden and no onward chain.

- Three bedrooms
- South-facing garden
- Potential to extend and remodel (STP)
- In need of updating
- No onward chain
- Fielding catchment



Freehold / House - Semi-Detached

Mayfield Avenue, W13 9UT

£830,000

This period semi-detached house is in need of complete modernisation/updating and offers fantastic potential to enhance and extend (STP) . Benefitting from generous room sizes, an excellent size South facing garden and no onward chain.

Having been in the same family ownership for many years this family house would now benefit from further modernisation and updating. On the ground floor there are two reception rooms, one with French doors opening onto the really good size South facing garden and a fitted kitchen with a door also opening onto the garden. The first floor features two double bedrooms, a single bedroom and family bathroom.

Well located with just a short walk to the the highly regarded Fielding Primary School and the local shops, café bars and eateries on Northfield Avenue along with Northfields Piccadilly Line Tube station. The green open spaces of Walpole and Lammas parks are also close by.



84 Northfield Avenue, London, W13 9RR

020 8840 5151

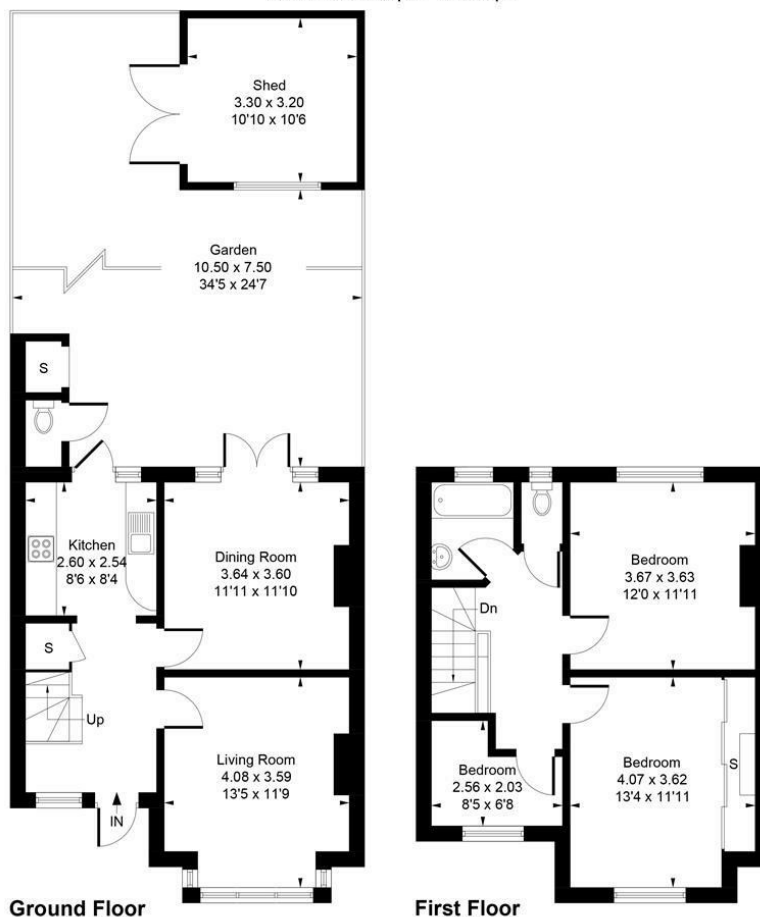


63 Mayfield Avenue, W13

Approximate Gross Internal Area = 92.48 sq m / 995 sq ft

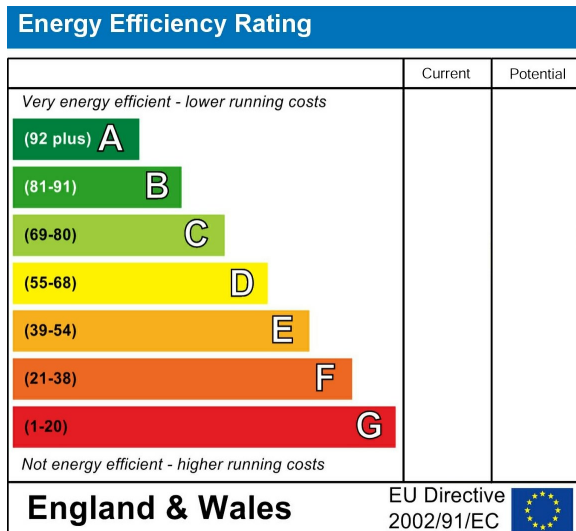
Shed = 10.56 sq m / 114 sq ft

Total = 103.04 sq m / 1109 sq ft



Whilst every attempt has been made to ensure the accuracy of the floor plan contained here, measurements of doors, windows, rooms and any other items are approximate and no responsibility is taken for any error, omission, or mis-statement.
This plan is for illustrative purposes only and should be used as such by any prospective purchaser.
Produced by jcphotographystudio.com

Energy Performance Graph



Call us on

020 8840 5151

northfieldsales@sintonandrews.co.uk

www.sintonandrews.co.uk

Agents Note: Whilst every care has been taken to prepare these particulars, they are for guidance purposes only. All measurements are approximate and are for general guidance purposes only and whilst every care has been taken to ensure their accuracy, they should not be relied upon and potential buyers are advised to recheck the measurements.