

84 Northfield Avenue, London, W13 9RR

020 8840 5151



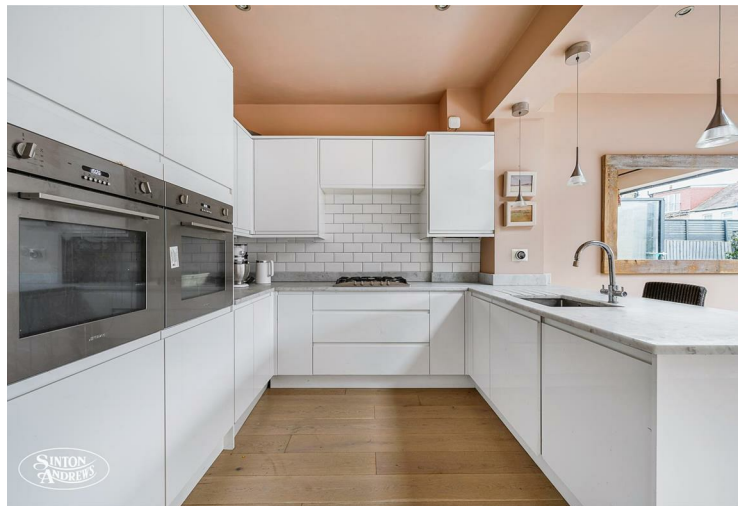
Freehold / House - Terraced

Green Avenue

£975,000

A beautifully appointed fully-extended late Victorian home with a pretty South-facing garden and in-catchment for excellent local schools.

- Catchment for Fielding & Elthorne High schools
- Open-plan kitchen
- South-facing garden
- Close to Lammas & Walpole parks
- Three bedrooms
- Downstairs cloakroom/utility room



Freehold / House - Terraced

Green Avenue, W13 9RW

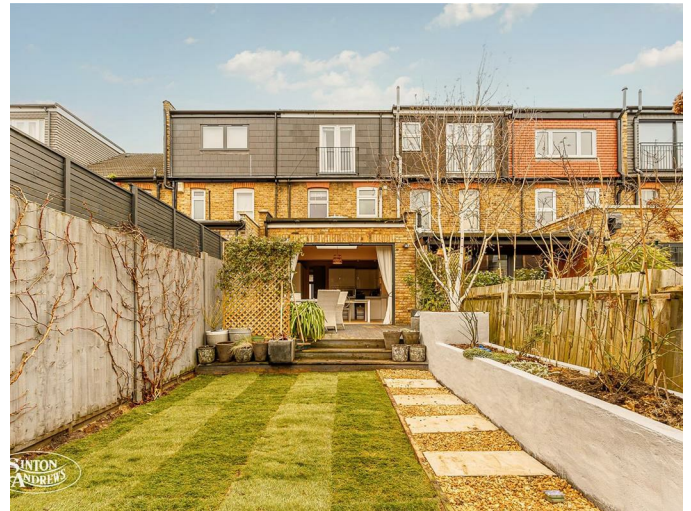
£975,000

Offering a perfect blend of period charm and modern living, this fully extended Victorian home ticks all the boxes.

The ground floor features a lounge with period features and plantation shutters, a very useful downstairs WC/utility room and a wonderful open-plan kitchen opening onto a pretty South-facing landscaped garden.

Up on the first floor there are two bedrooms and a newly fitted family bathroom. The loft has been converted creating the principal bedroom, en-suite shower room and additional storage space.

Green Avenue is perfectly positioned just off Northfield Avenue which offers a vast array of local shops and amenities. There are parks and open green spaces plus the excellent transport links including Northfields Piccadilly Line tube station which provides a great service to London Heathrow and Central London. The highly regarded local schools including Fielding Primary School, Ealing Fields and Elthorne High School, all make this an extremely desirable area for families and professionals alike.

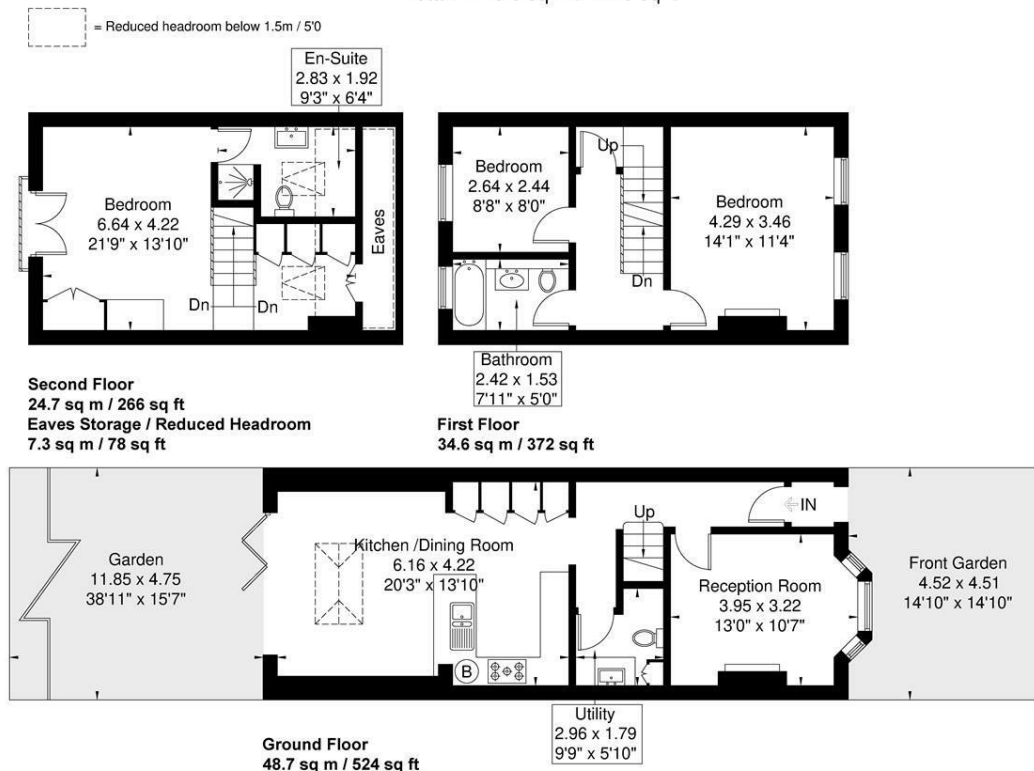


Green Avenue

Approximate Gross Internal Area = 108.0 sq m / 1162 sq ft

Eaves Storage / Reduced Headroom = 7.3 sq m / 78 sq ft

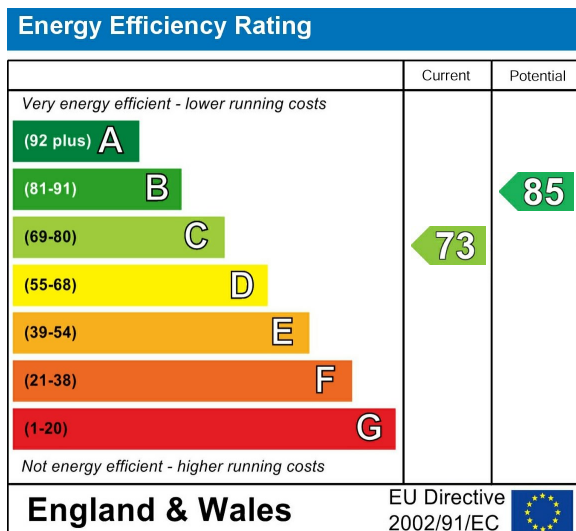
Total = 115.3 sq m / 1240 sq ft



Although every attempt has been made to ensure accuracy, all measurements are approximate. The floorplan is for illustrative purposes only and not to scale.

© www.perspective.co.uk

Energy Performance Graph



Call us on

020 8840 5151

northfieldsales@sintonandrews.co.uk

www.sintonandrews.co.uk

Agents Note: Whilst every care has been taken to prepare these particulars, they are for guidance purposes only. All measurements are approximate and are for general guidance purposes only and whilst every care has been taken to ensure their accuracy, they should not be relied upon and potential buyers are advised to recheck the measurements.