

84 Northfield Avenue, London, W13 9RR

020 8840 5151



Freehold / House - Terraced

Thurlow Road

£775,000

A three bedroom Edwardian house with a good size West facing garden, close to Fielding Primary & Elthorne High Schools. Offered with no onward chain and potential to extend.

- Peaceful cul-de-sac
- Three bedrooms
- Good size West facing garden
- Chain free
- Close to excellent local schools & parks
- Piccadilly & Elizabeth Line closeby



Freehold / House - Terraced

Thurlow Road, W7 2JG

£775,000

Having been in the same family ownership for many years this attractive Edwardian house would now benefit from further modernisation and offers fantastic scope to extend.

The ground floor comprises two reception rooms and kitchen with a door leading to a good size West facing garden with secured rear access and on the first floor there are three bedrooms and a shower room. With double glazing, gas central heating and no onward chain.

Thurlow Road is a leafy cul de sac on the borders of Hanwell and Northfields and perfectly placed for excellent local schools notably Elthorne Park High and Fielding Primary, both are just a short walk away. Boston Manor and Northfields Piccadilly Line stations along with West Ealing Elizabeth Line station are also close by and Elthorne Park is literally at the end of the road.



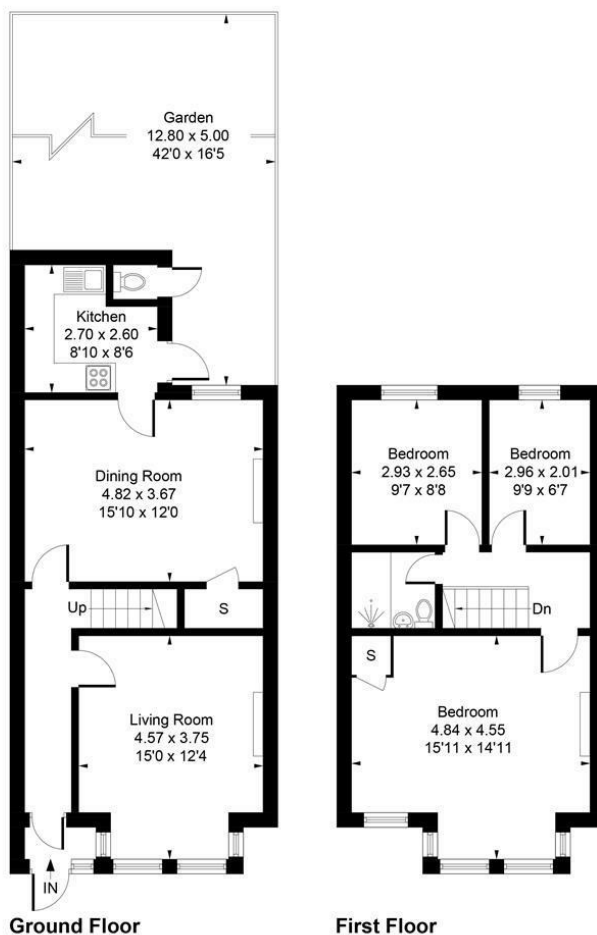
84 Northfield Avenue, London, W13 9RR

020 8840 5151



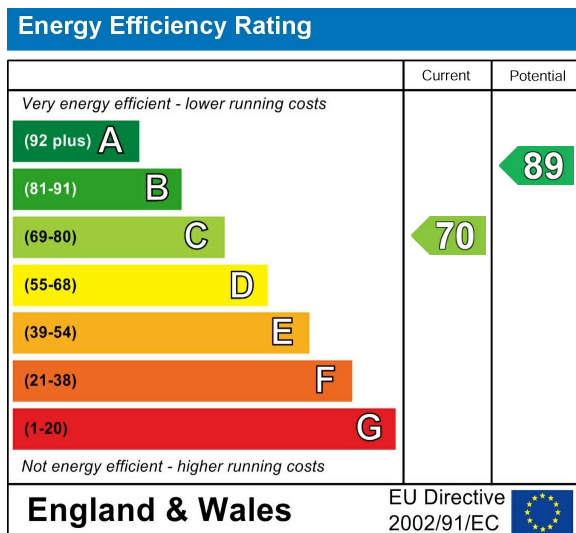
13 Thurlow Road, W7

Approximate Gross Internal Area
95.46 sq m / 1028 sq ft



Whilst every attempt has been made to ensure the accuracy of the floor plan contained here, measurements of doors, windows, rooms and any other items are approximate and no responsibility is taken for any error, omission, or mis-statement.
This plan is for illustrative purposes only and should be used as such by any prospective purchaser.
Produced by jcphotographystudio.com

Energy Performance Graph



Call us on

020 8840 5151

northfieldsales@sintonandrews.co.uk

www.sintonandrews.co.uk

Agents Note: Whilst every care has been taken to prepare these particulars, they are for guidance purposes only. All measurements are approximate and are for general guidance purposes only and whilst every care has been taken to ensure their accuracy, they should not be relied upon and potential buyers are advised to recheck the measurements.