



**Freehold / House - Terraced**

**Junction Road**

**£830,000**

A well appointed three double bedroom period house offered to the market with no onward chain.

- Three double bedrooms
- No onward chain
- Double glazed throughout
- Secluded West facing garden
- Excellent local schools
- Close to Northfields + South Ealing tube



**Freehold / House - Terraced**

# Junction Road, W5 4XP

£830,000

This Victorian mid-terrace house is arranged over three floors, boasts a secluded West facing garden and offers potential to extend on the ground floor (STP).

The ground floor features a front reception room with beautiful fireplace and high ceilings. Flooded with natural light, the second reception room benefits from understairs storage cupboards and opens onto a neutral and fully fitted kitchen. The pretty and secluded West facing garden has been well maintained, a great space for entertaining. It also has valuable rear access via gate to shared pathway.

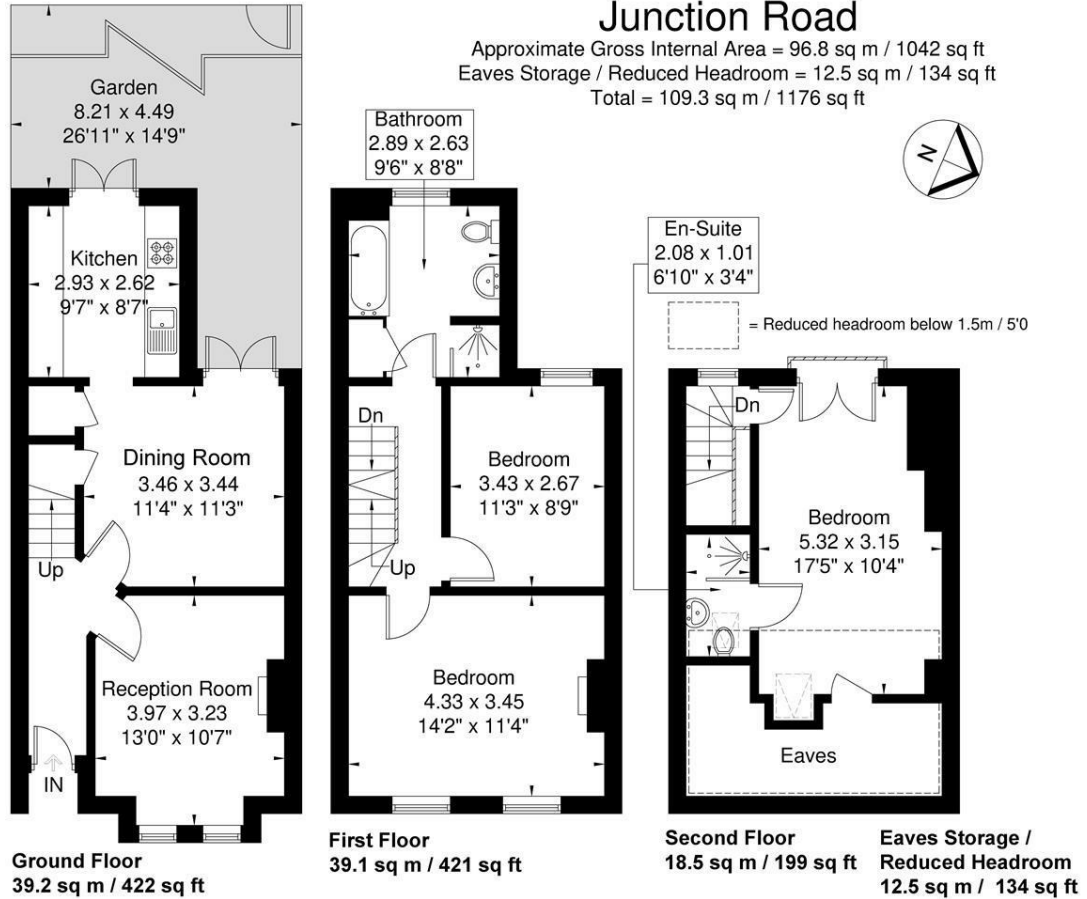
Up onto the first floor there are two double bedrooms and a good size family bathroom. The loft has been converted creating the principal bedroom with an en suite shower room and plenty of additional storage space.

On this residential enclave known as 'Little Ealing' just a moments' walk from Little Ealing, Mount Carmel and Ealing Fields schools and well placed for the local shops, café bars, restaurants and Piccadilly Line stations of South Ealing and Northfields.



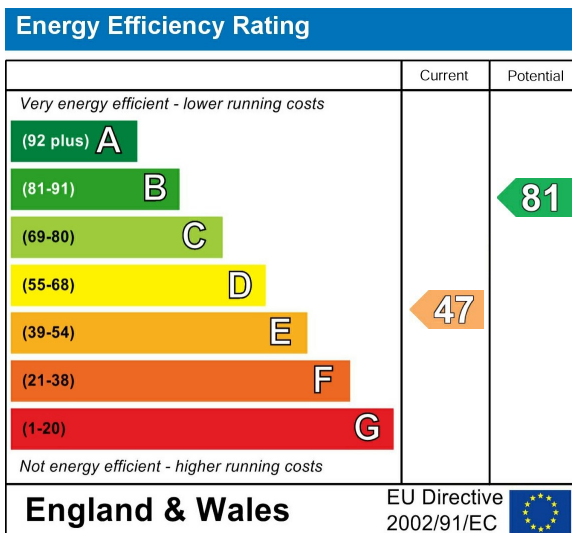
## Junction Road

Approximate Gross Internal Area = 96.8 sq m / 1042 sq ft  
 Eaves Storage / Reduced Headroom = 12.5 sq m / 134 sq ft  
 Total = 109.3 sq m / 1176 sq ft



Although every attempt has been made to ensure accuracy, all measurements are approximate. The floorplan is for illustrative purposes only and not to scale.  
 © www.perspective.co.uk

### Energy Performance Graph



Call us on

020 8840 5151

northfieldsales@sintonandrews.co.uk

www.sintonandrews.co.uk

Agents Note: Whilst every care has been taken to prepare these particulars, they are for guidance purposes only. All measurements are approximate and are for general guidance purposes only and whilst every care has been taken to ensure their accuracy, they should not be relied upon and potential buyers are advised to recheck the measurements.