

84 Northfield Avenue, London, W13 9RR

020 8840 5151



**Share of Freehold / Apartment**

**Kingsdown Avenue**

**£565,000**

A super two bedroom ground floor flat with a private South facing garden and offered with a Share of Freehold.

- Two bedrooms
- Private South facing garden
- Share of Freehold
- Excellent transport links
- Close to local shops and eateries



**Share of Freehold / Apartment**

# Kingsdown Avenue, W13 9PT

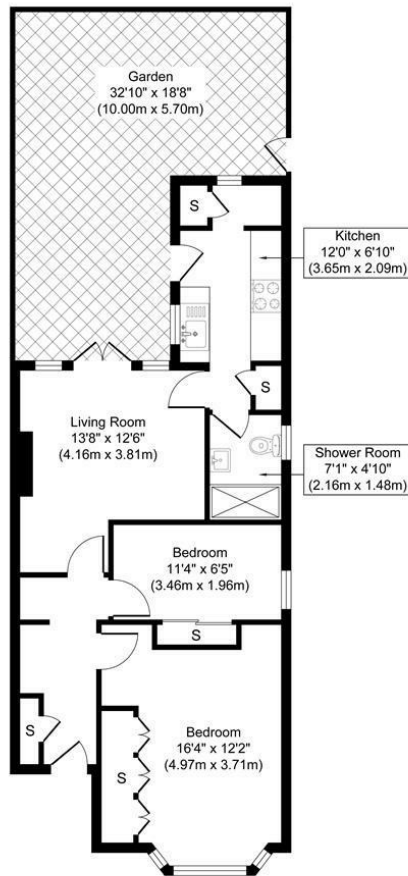
## £565,000

The property comprises two bedrooms both with fitted wardrobes, lounge with a lovely period fireplace and French doors opening onto a pretty sun-trap South facing garden with very useful side access, a smart fitted kitchen and shower room.

Kingsdown Avenue is a highly regarded street moments from the independent shops and eateries on Northfield Avenue. Also, close to Northfields Piccadilly Line and Elizabeth Line stations, well regarded local schools and both Lammas and Walpole Parks.

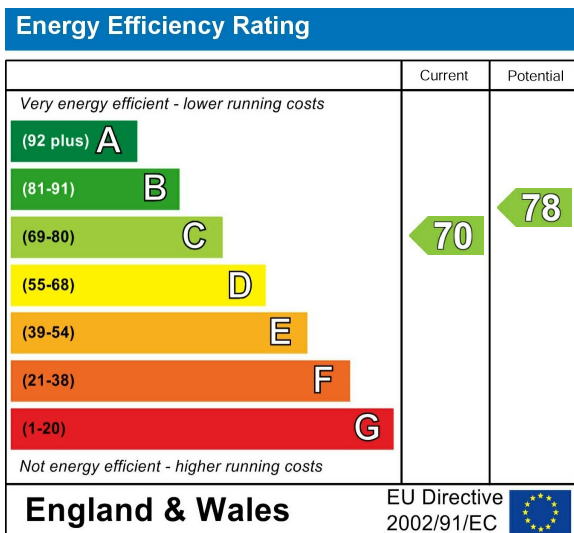


**56, Kingsdown Avenue,  
London, W13**



Approximate Gross Internal Floor Area 631.83 sq. ft / 58.69 sq. m  
Illustration for identification purposes only, measurements are approximate, not to scale.  
 produced by pghotographystudio.com

Energy Performance Graph



Call us on

**020 8840 5151**

[northfieldsales@sintonandrews.co.uk](mailto:northfieldsales@sintonandrews.co.uk)

[www.sintonandrews.co.uk](http://www.sintonandrews.co.uk)

Agents Note: Whilst every care has been taken to prepare these particulars, they are for guidance purposes only. All measurements are approximate and are for general guidance purposes only and whilst every care has been taken to ensure their accuracy, they should not be relied upon and potential buyers are advised to recheck the measurements.