



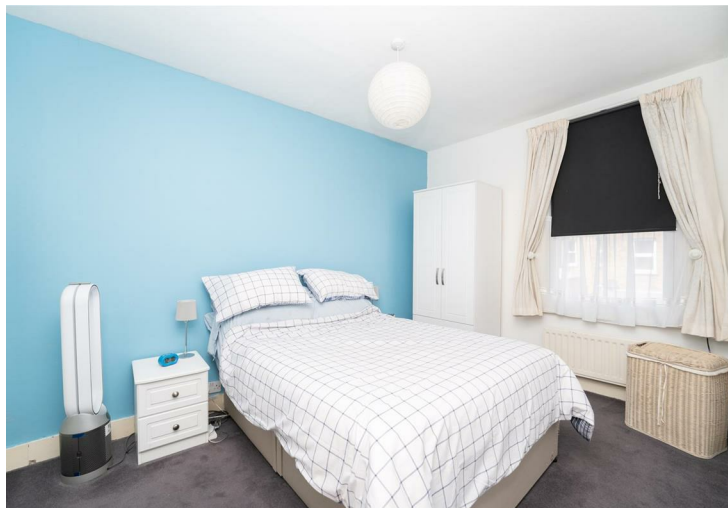
Freehold / House - End Terrace

Salisbury Road

£880,000

An extended three double bedroom two bathroom Victorian house located in the heart of Northfields and falling within Fielding Primary & Elthorne High School catchments.

- Three bedrooms, 2 bathrooms
- Downstairs cloakroom
- Rear garden with side access
- Sash style double glazing
- Catchment for Fielding & Elthorne High Schools
- Close to local shops & transport links



Freehold / House - End Terrace

Salisbury Road, W13 9TX

£880,000

On the ground floor, the property features two separate reception rooms an extended fitted kitchen and a very useful downstairs cloakroom. French doors from the kitchen lead to a low maintenance private rear garden which has side access.

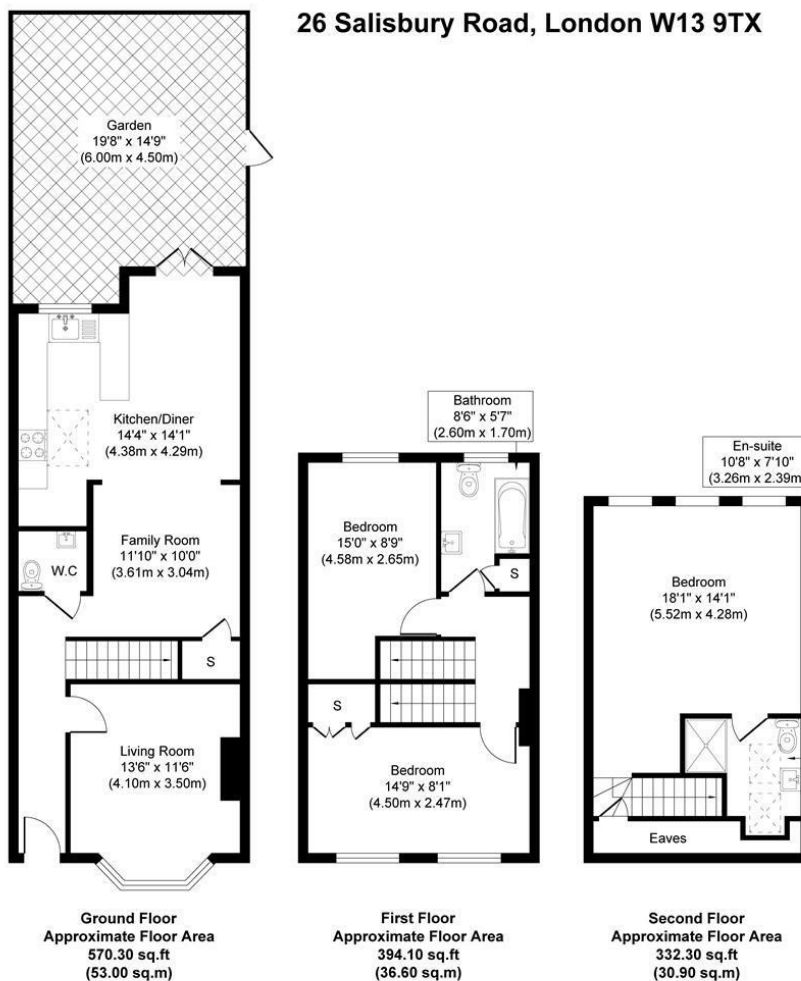
Up on the first floor there are two double bedrooms both with fitted wardrobes and a smart family bathroom.

The top floor has been converted creating a further double bedroom with an en-suite shower room and plenty of additional storage space.

Salisbury Road is perfectly positioned off Northfield Avenue, which offers a vast array of local shops and amenities. The parks and open green spaces, plus the excellent transport links including Northfields Piccadilly Line tube station and West Ealing Elizabeth Line plus the highly regarded local schools including Fielding Primary School and Elthorne High School, all make this an extremely desirable area for families and professionals alike.



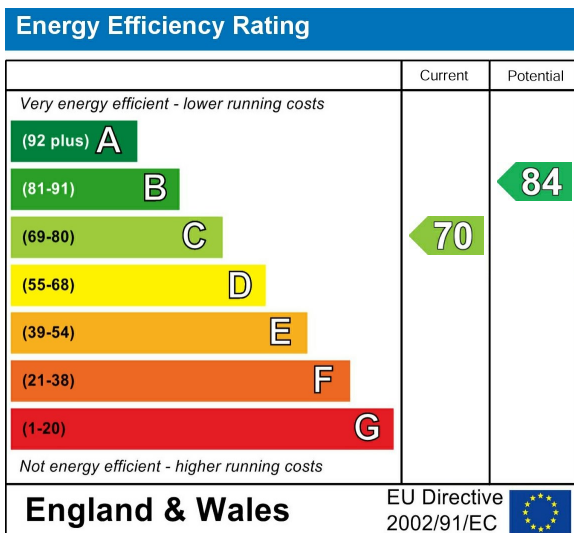
26 Salisbury Road, London W13 9TX



Approximate Gross Internal Floor Area 1297 sq. ft / 120.5 sq. m

Illustration for identification purposes only, measurements are approximate, not to scale.
produced by jcphtographystudio.com

Energy Performance Graph



Call us on

020 8840 5151

northfieldsales@sintonandrews.co.uk

www.sintonandrews.co.uk

Agents Note: Whilst every care has been taken to prepare these particulars, they are for guidance purposes only. All measurements are approximate and are for general guidance purposes only and whilst every care has been taken to ensure their accuracy, they should not be relied upon and potential buyers are advised to recheck the measurements.