

84 Northfield Avenue, London, W13 9RR

020 8840 5151



**Share of Freehold / Apartment**

**Camborne Avenue**

**£465,000**

A super one bedroom flat with bi-folding doors onto a private garden, offered chain free and with a share of freehold in this highly sought after location.

- Share of Freehold
- Chain free
- Bi folding doors
- Private garden
- Excellent transport links
- Close to local shops and eateries



**Share of Freehold / Apartment**

# Camborne Avenue, W13 9QZ

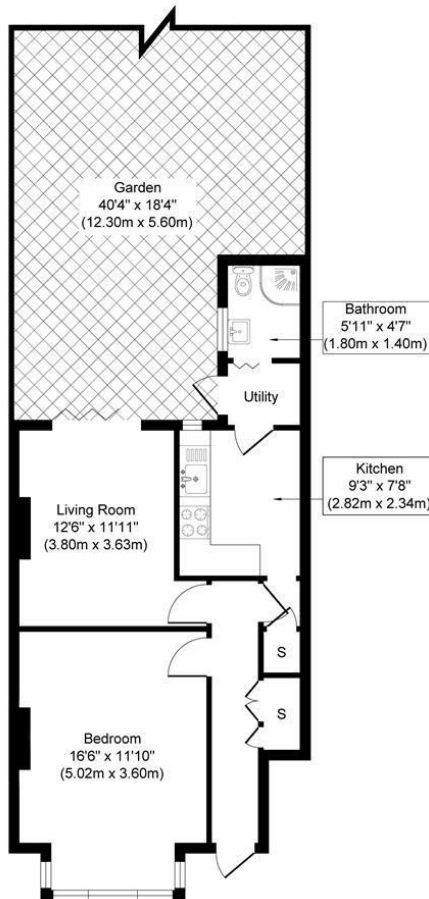
## £465,000

This fabulous garden flat comprises a double bedroom, good size lounge with a feature fireplace and bi-folding doors onto a private garden, an eat-in kitchen and shower room. Offered with a Share of Freehold, no onward chain and the potential to extend.

Camborne Avenue is a highly desirable location, moments from Lammas and Walpole Parks, the local shopping parades, cafes and Piccadilly Line station on Northfield Avenue and close to excellent local schools including Fielding, Little Ealing and Mount Carmel Primary and Ealing Fields Secondary schools.

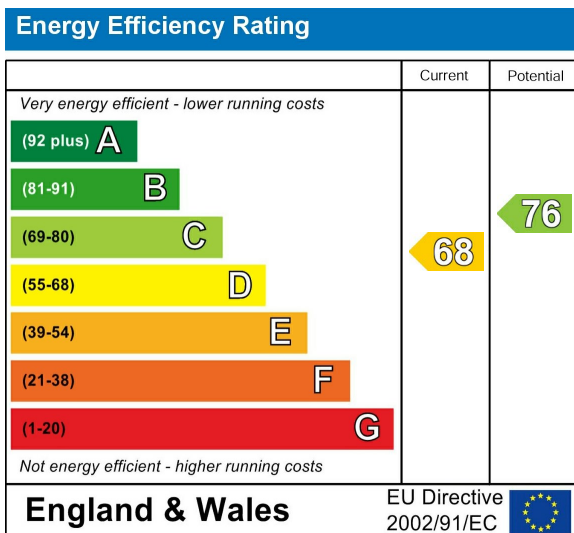


43 Camborne Ave W13



Approximate Gross Internal Floor Area 524.74 sq. ft / 48.75 sq. m  
 Illustration for identification purposes only, measurements are approximate, not to scale.  
 produced by jcphotographystudio.com

Energy Performance Graph



Call us on

020 8840 5151

northfieldsales@sintonandrews.co.uk

www.sintonandrews.co.uk

Agents Note: Whilst every care has been taken to prepare these particulars, they are for guidance purposes only. All measurements are approximate and are for general guidance purposes only and whilst every care has been taken to ensure their accuracy, they should not be relied upon and potential buyers are advised to recheck the measurements.