



Freehold / House - Terraced

Hessel Road

£850,000

Tucked away just off Northfield Avenue, this beautifully appointed and deceptively spacious three bedroom Edwardian house is brimming with character and offered to the market in excellent condition throughout.

- Three bedrooms
- Period features
- No onward chain
- Downstairs cloakroom
- Catchment for Fielding Primary & Elthorne High schools
- Potential to extend (STP)



Freehold / House - Terraced

Hessel Road, W13 9ER

£850,000

With high ceilings, fireplaces and double glazed sash windows, this period home has been tastefully updated by the current owner with an exacting eye for detail.

The property features a light filled through lounge with a beautiful fireplace, stripped back original flooring and high ceiling. The rear of the property boasts a 'Shaker-style' kitchen/breakfast room and a very useful downstairs cloakroom. The door from the kitchen opens onto a pretty and secluded rear garden.

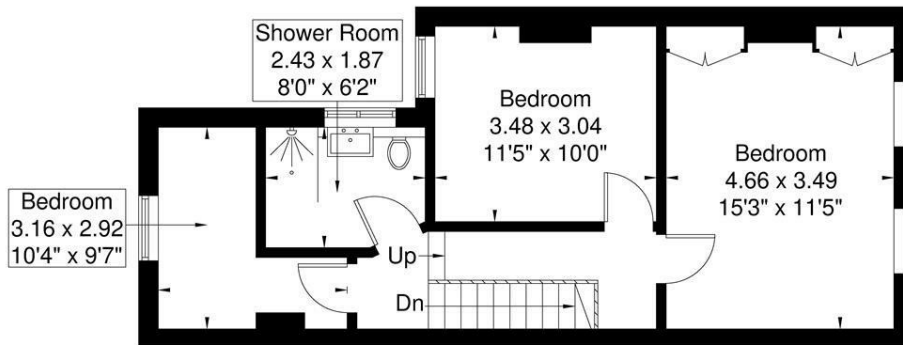
Up onto the first floor there are two double bedrooms, a single bedroom and a smart family bathroom. There is potential to extend into loft space creating a further double bedroom and bathroom, subject the usual consents.

Hessel Road is located In the heart of Northfields close to Fielding Primary school and well placed for Elthorne High school. The shops, café bars and eateries on Northfield Avenue are just a short stroll away along with the Piccadilly Line tube station, West Ealing station (Crossrail) and several local parks.

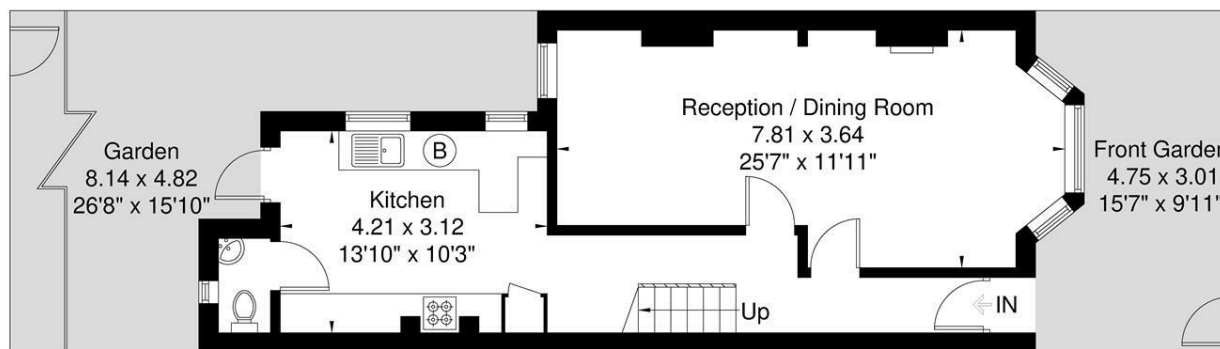


Hessel Road

Approximate Gross Internal Area = 94.1 sq m / 1012 sq ft



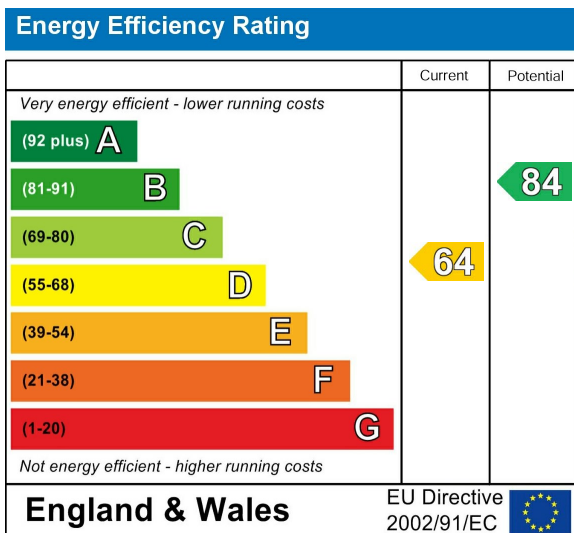
First Floor
45.9 sq m / 494 sq ft



Ground Floor
48.2 sq m / 518 sq ft

Although every attempt has been made to ensure accuracy, all measurements are approximate. The floorplan is for illustrative purposes only and not to scale.
© www.prspective.co.uk

Energy Performance Graph



Call us on

020 8840 5151

northfieldsales@sintonandrews.co.uk

www.sintonandrews.co.uk

Agents Note: Whilst every care has been taken to prepare these particulars, they are for guidance purposes only. All measurements are approximate and are for general guidance purposes only and whilst every care has been taken to ensure their accuracy, they should not be relied upon and potential buyers are advised to recheck the measurements.