

84 Northfield Avenue, London, W13 9RR

020 8840 5151



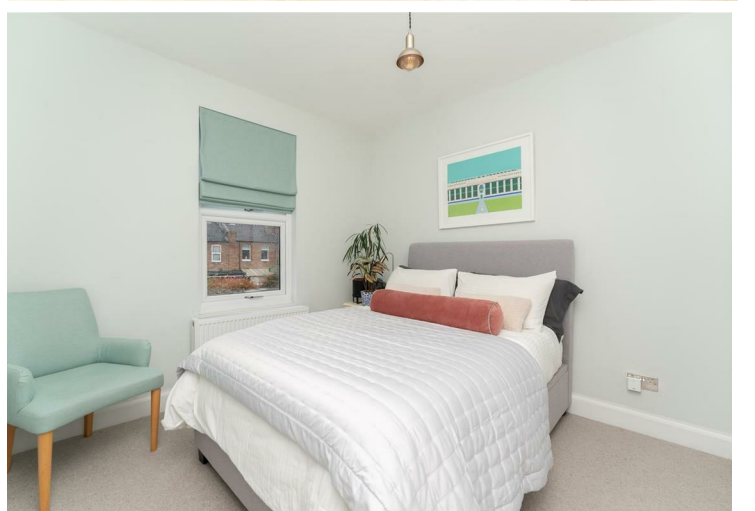
Freehold / House - Terraced

Salisbury Road

£885,000

*****viewings commence Monday 22nd July*** A beautifully appointed period home tucked away off Northfield Avenue.**

- Wonderful open-plan kitchen
- Catchment for Fielding Primary & Elthorne High schools
- Close to Lammas and Walpole parks
- South-facing garden
- Downstairs WC
- Excellent condition throughout



Freehold / House - Terraced

Salisbury Road, W13 9TU

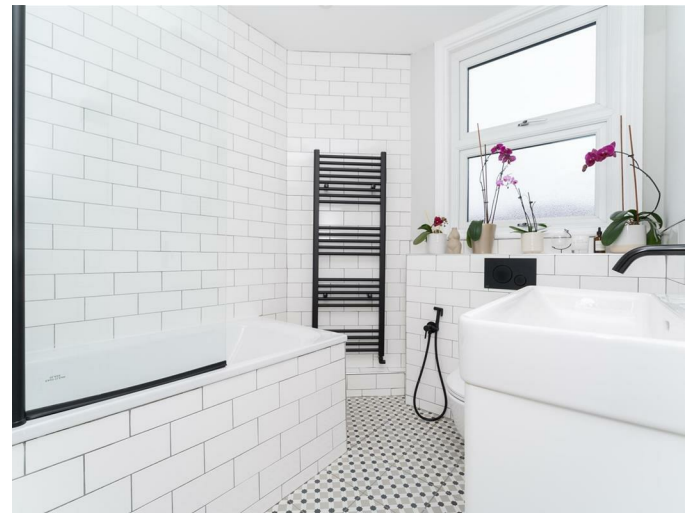
£885,000

This late Victorian family home has been updated and extended by the current owners to an exemplary standard. With an exacting eye for detail, the property boasts a perfect blend of period charm and modern family living.

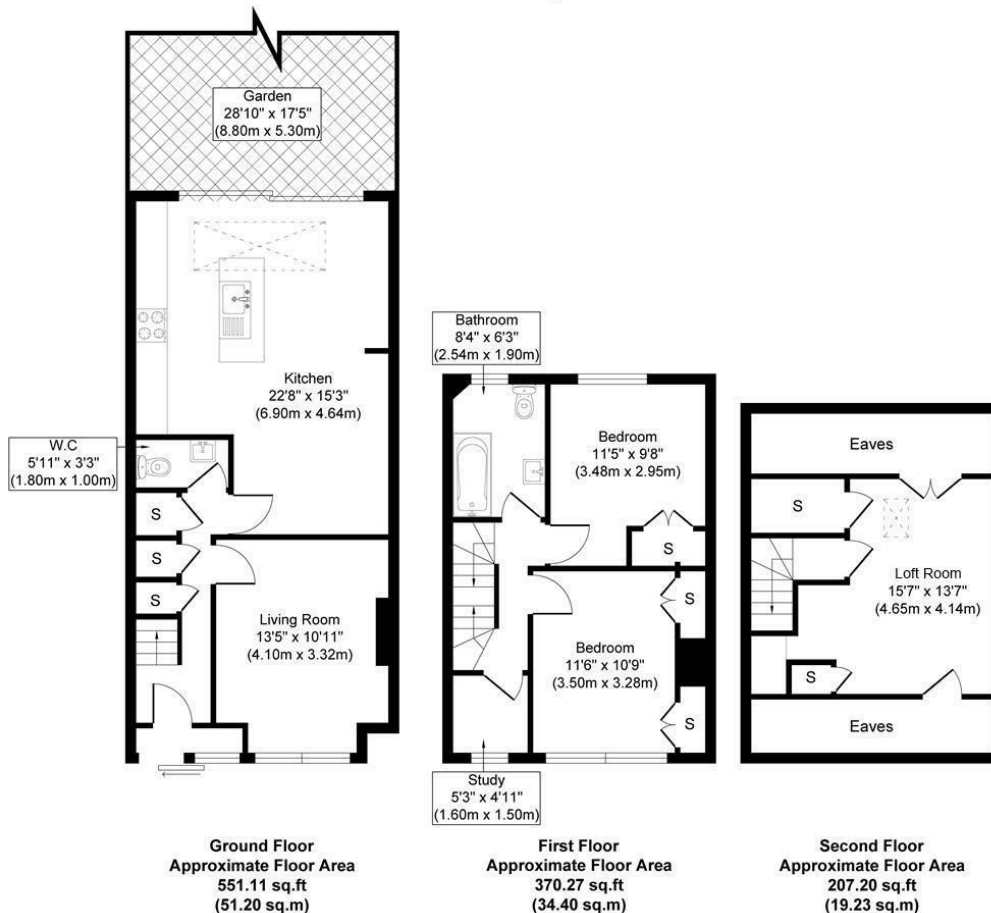
The ground floor features a beautifully appointed front reception room, a wonderful open-plan kitchen/diner/living area with sliding doors opening onto a pretty South-facing garden. A very useful downstairs WC completes the ground floor.

Up onto the first floor there are two double bedrooms, a study and family bathroom. The top floor comprises a very useful loft conversion.

Salisbury Road is located in the heart of Northfields close to Fielding Primary school and well placed for Elthorne High school. The shops, café bars and eateries on Northfield Avenue are just a short stroll away along with the Piccadilly Line tube station, West Ealing station (Crossrail) and several local parks.



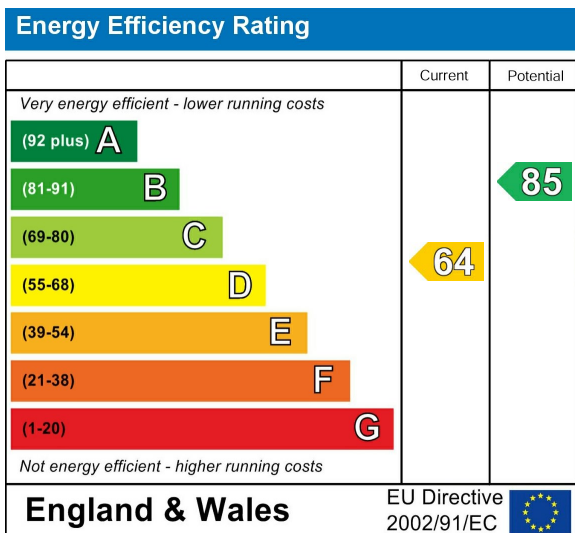
3 Salisbury Road W13



Approximate Gross Internal Floor Area 1128.58 sq. ft / 104.85 sq. m

Illustration for identification purposes only, measurements are approximate, not to scale.
produced by jcphotographystudio.com

Energy Performance Graph



Call us on

020 8840 5151

northfieldsales@sintonandrews.co.uk

www.sintonandrews.co.uk

Agents Note: Whilst every care has been taken to prepare these particulars, they are for guidance purposes only. All measurements are approximate and are for general guidance purposes only and whilst every care has been taken to ensure their accuracy, they should not be relied upon and potential buyers are advised to recheck the measurements.