

84 Northfield Avenue, London, W13 9RR

020 8840 5151



**Freehold / House - End Terrace**

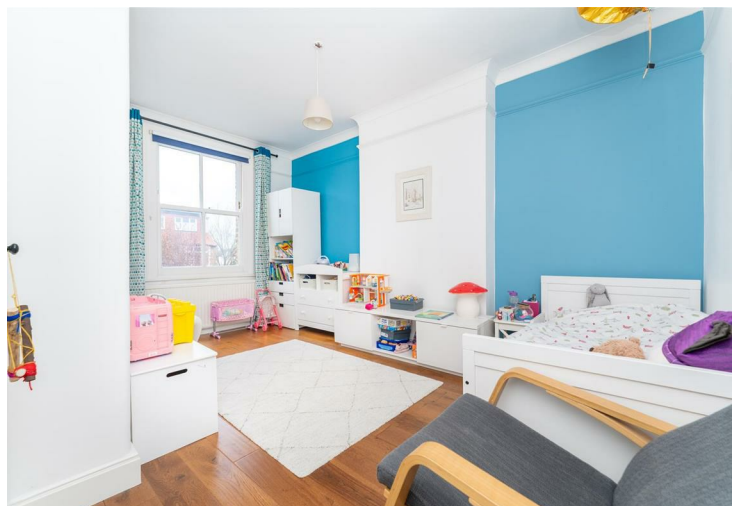
**Kingsdown Avenue**

**£1,350,000**

Occupying a generous South-Westerly corner plot and boasting the perfect blend of Edwardian features and contemporary interior design, this flawless five bedroom house is located on one of Northfield's premier roads.

- Five bedrooms
- Wide South-West plot
- Served by several outstanding schools
- Excellent transport links (Northfields tube and Crossrail)
- Open-plan kitchen
- Close to Lammas & Walpole Parks
- No onward chain







**Freehold / House - End Terrace**

## Kingsdown Avenue, W13 9PT

£1,350,000

This Edwardian family home is arranged over three floors and is immaculately presented throughout.

The ground floor features a front reception room with a beautiful log burner and built in shelving and storage units. The rear of the property has been extended, creating a wonderful open-plan kitchen/diner/living area with large bi-folding doors opening onto a wide South-facing garden with valuable side access. There is also a very useful utility room with an abundance of storage and WC.

Up onto the first floor there are two generous double bedrooms, family bathroom and separate WC and a single bedroom. The loft space has been converted, which now houses two double bedrooms, shower room and plenty of additional storage space.

Kingsdown Avenue is a highly regarded street moments from the independent shops and eateries on Northfield Avenue. Also, close to the Piccadilly Line station, well regarded local schools and both Lammas and Walpole Parks.





20 Kingsdown Avenue, W13 9PT

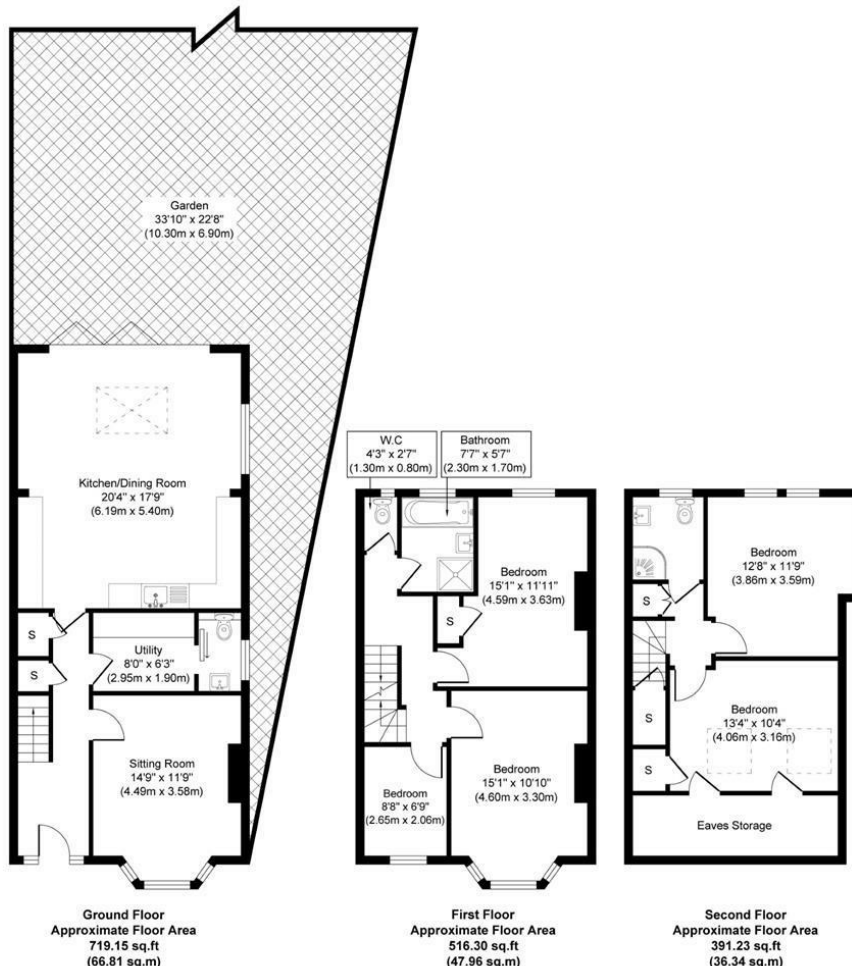
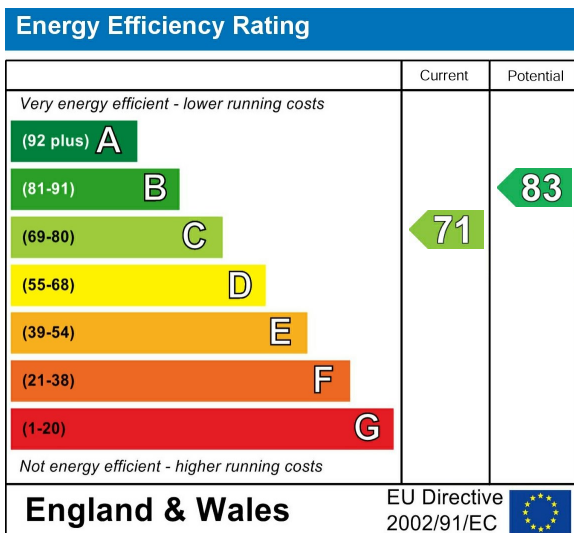


Illustration for identification purposes only, measurements are approximate, not to scale.  
produced by jsphotographystudio.com

Energy Performance Graph



Call us on

020 8840 5151

northfieldsales@sintonandrews.co.uk

www.sintonandrews.co.uk

Agents Note: Whilst every care has been taken to prepare these particulars, they are for guidance purposes only. All measurements are approximate and are for general guidance purposes only and whilst every care has been taken to ensure their accuracy, they should not be relied upon and potential buyers are advised to recheck the measurements.