

84 Northfield Avenue, London, W13 9RR

020 8840 5151



Freehold / House - Terraced

Wellington Road

£870,000

A beautifully appointed three bedroom Edwardian family home with a South facing garden and offered chain free. Moments from highly regarded local schools, parks and transport links.

- Edwardian house
- Close to excellent local schools
- Moments from Northfield Piccadilly Line
- South facing garden
- Chain free



Freehold / House - Terraced

Wellington Road, W5 4UH

£870,000

This Edwardian house has been in the same family ownership for over 60 years and whilst it has been lovingly maintained it would now benefit from further modernisation and updating. Offering excellent room sizes throughout the ground floor consists of lounge, dining room with French doors opening onto a South facing garden and fitted kitchen also opening onto the garden. Up on the first floor there are three bedrooms and family bathroom. With GCH, double glazing throughout and offered with no onward chain.

Wellington Road is situated in a sought after location close to both Lammas and Walpole Parks and is perfectly placed for Northfields Piccadilly Line Station. Little Ealing and Mount Carmel primary schools and Ealing Fields High School are close by, all very popular with local families.



40 Wellington Road W5

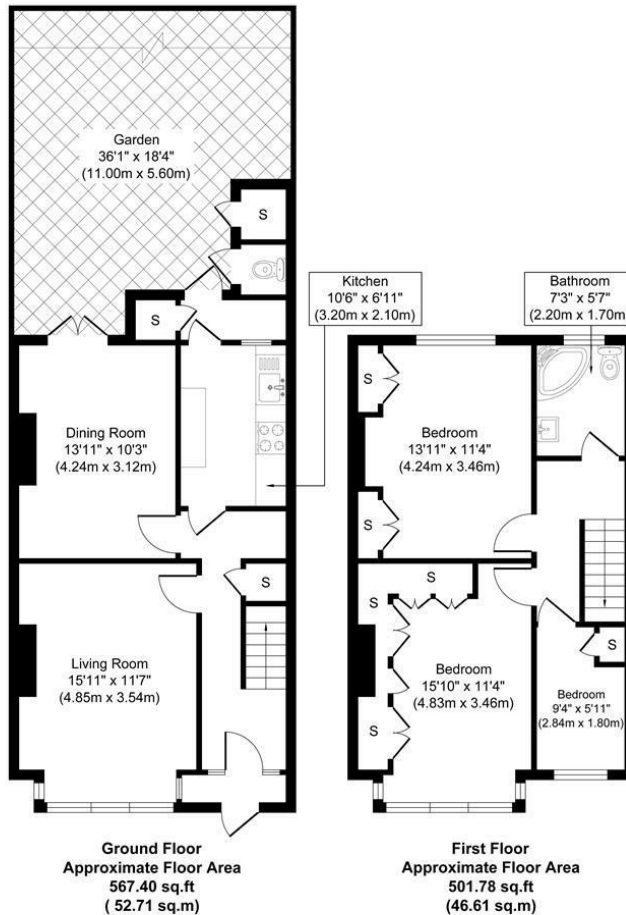


Illustration for identification purposes only, measurements are approximate, not to scale.
 produced by jcpphotographystudio.com

Energy Performance Graph

Energy Efficiency Rating

	Current	Potential
Very energy efficient - lower running costs		
(92 plus) A		
(81-91) B		82
(69-80) C		
(55-68) D	62	
(39-54) E		
(21-38) F		
(1-20) G		
Not energy efficient - higher running costs		
England & Wales	EU Directive 2002/91/EC	

Call us on

020 8840 5151

northfieldsales@sintonandrews.co.uk

www.sintonandrews.co.uk

Agents Note: Whilst every care has been taken to prepare these particulars, they are for guidance purposes only. All measurements are approximate and are for general guidance purposes only and whilst every care has been taken to ensure their accuracy, they should not be relied upon and potential buyers are advised to recheck the measurements.