

84 Northfield Avenue, London, W13 9RR

020 8840 5151



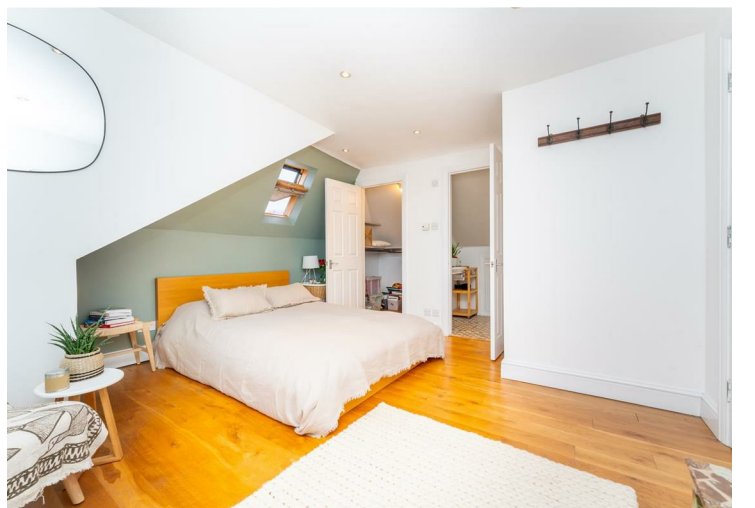
Freehold / House - Semi-Detached

Carew Road

£1,580,000

In this most coveted location on the doorstep of Lammas Park, a superb five bedroom two bathroom family house with off road parking, a pretty suntrap West facing garden and offered with no onward chain.

- Five bedroom, two bathroom
- Pretty suntrap West facing garden
- Off road parking
- Chain free
- Bi folding doors
- Period features



Freehold / House - Semi-Detached

Carew Road, W13 9QL

£1,580,000

On the West side of Carew Road, a semi-detached house in impeccable condition and brimming with character.

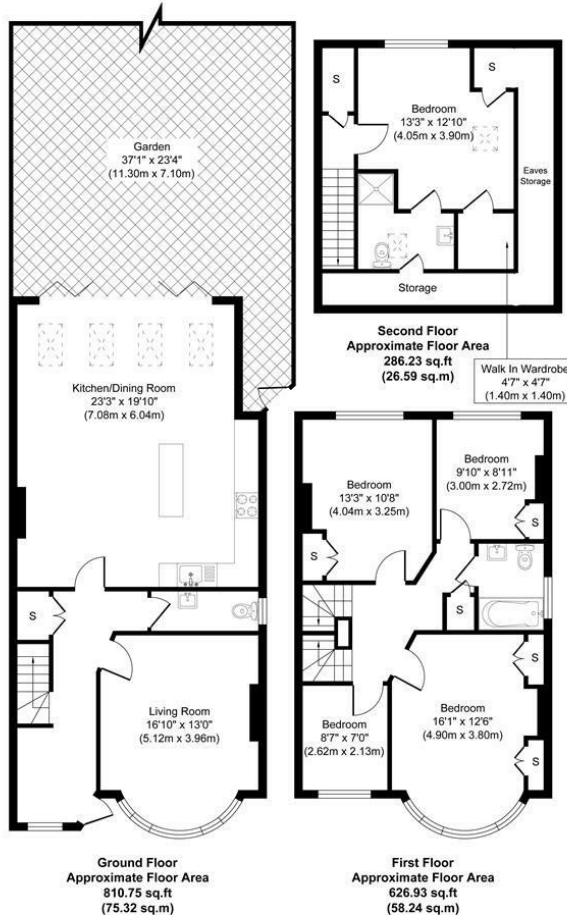
As you enter the property the hall features a tiled floor and panelled walls and leads to a generous reception room, a very useful cloakroom and a wonderfully bright open-plan kitchen/diner/family room with an island/breakfast bar and fold-away doors leading to a wide and pretty suntrap West facing garden which provides a good degree of seclusion.

Up on the first floor there are four bedrooms, three of which have built-in wardrobes and a family bathroom. The loft space has been converted, creating a double bedroom, shower room, walk in dressing/storage area and plenty of additional storage space.

Carew Road is a quiet leafy side road on the doorstep of Lammas Park and the neighbourhood shops, eateries and Piccadilly Line station on Northfield Avenue. A pleasant walk away through Walpole Park is Ealing Broadway Town Centre.

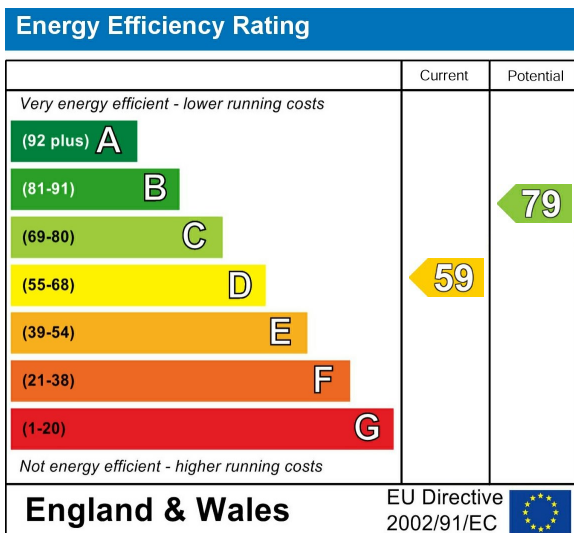


16 Carew Road W13



Approximate Gross Internal Floor Area 1723.92 sq. ft / 160.15 sq. m
 Illustration for identification purposes only, measurements are approximate, not to scale.
 produced by jcpphotographystudio.com

Energy Performance Graph



Call us on

020 8840 5151

northfieldsales@sintonandrews.co.uk

www.sintonandrews.co.uk

Agents Note: Whilst every care has been taken to prepare these particulars, they are for guidance purposes only. All measurements are approximate and are for general guidance purposes only and whilst every care has been taken to ensure their accuracy, they should not be relied upon and potential buyers are advised to recheck the measurements.