

84 Northfield Avenue, London, W13 9RR

020 8840 5151



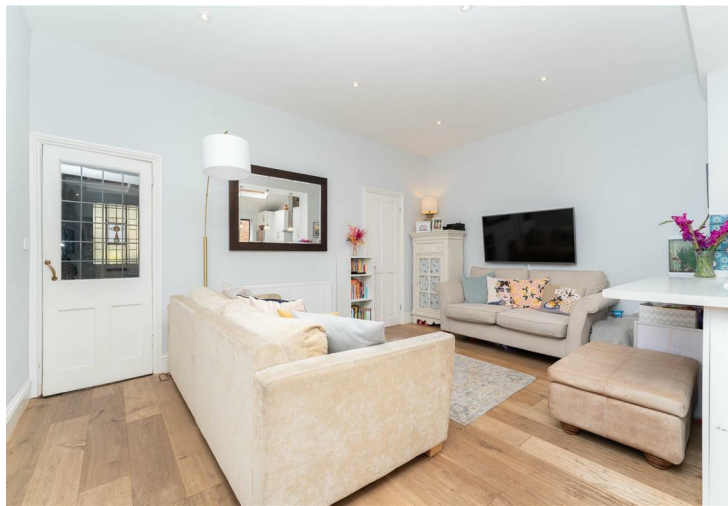
**Freehold / House - Terraced**

**Gumleigh Road**

**£845,000**

A charming three bedroom late Victorian family home tucked away just off Northfield Avenue.

- Three bedrooms
- Close to excellent local schools
- Full-width ground floor extension
- Downstairs cloakroom
- Beautifully landscaped garden
- Period features
- Double glazed
- Engineered wood flooring
- Superb condition throughout
- Piccadilly Line tube station moments away



**Freehold / House - Terraced**

# Gumleigh Road, W5 4UX

£845,000

Arranged over three floors, this characterful house has been updated and extended by the current owners creating a perfect blend of modern family living and period details.

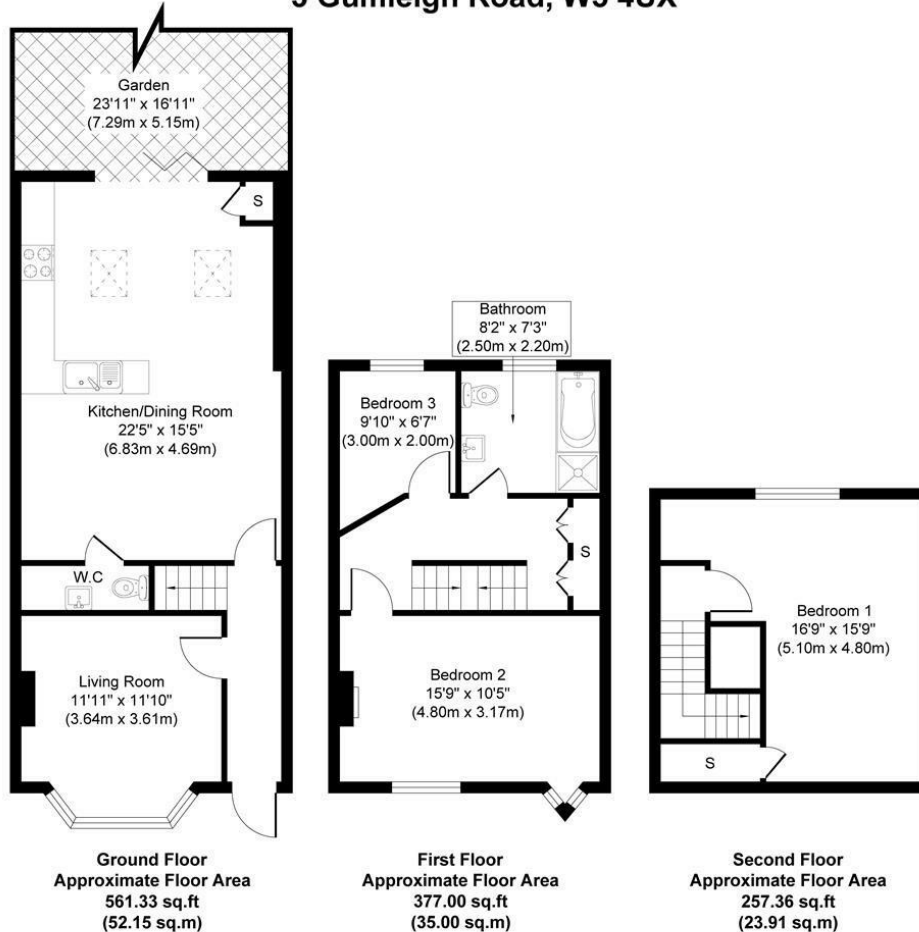
The ground floor features front reception room with a beautiful fireplace and built in storage units with shelving. The rear of the house has been extended and now boasts a wonderful open-plan kitchen/diner and living area. Bi-folding doors opens onto a recently landscaped rear garden. A very useful downstairs cloakroom and utility area completes the ground floor.

Up onto the first floor there's a large double bedroom, a second bedroom, which is currently being used as an office, and a smart family bathroom. The loft has been converted creating a third bedroom and plenty of additional storage space.

Gumleigh Road is tucked away on a quiet street in Little Ealing, just moments from Ealing Fields, Mount Carmel and Little Ealing Schools and well placed for the local shops, café bars, restaurants and Piccadilly Line Station in Northfield Avenue.



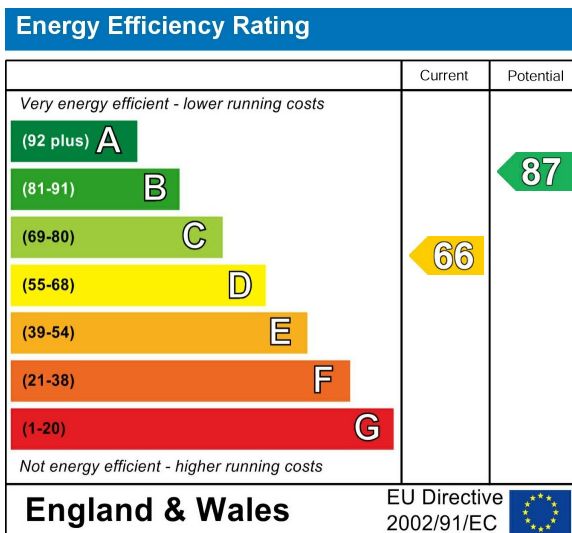
3 Gumleigh Road, W5 4UX



Approximate Gross Internal Floor Area 1195.69 sq. ft / 111.06 sq. m

Illustration for identification purposes only, measurements are approximate, not to scale.  
produced by jcpstudio.com

Energy Performance Graph



Call us on

020 8840 5151

northfieldsales@sintonandrews.co.uk

www.sintonandrews.co.uk

Agents Note: Whilst every care has been taken to prepare these particulars, they are for guidance purposes only. All measurements are approximate and are for general guidance purposes only and whilst every care has been taken to ensure their accuracy, they should not be relied upon and potential buyers are advised to recheck the measurements.