



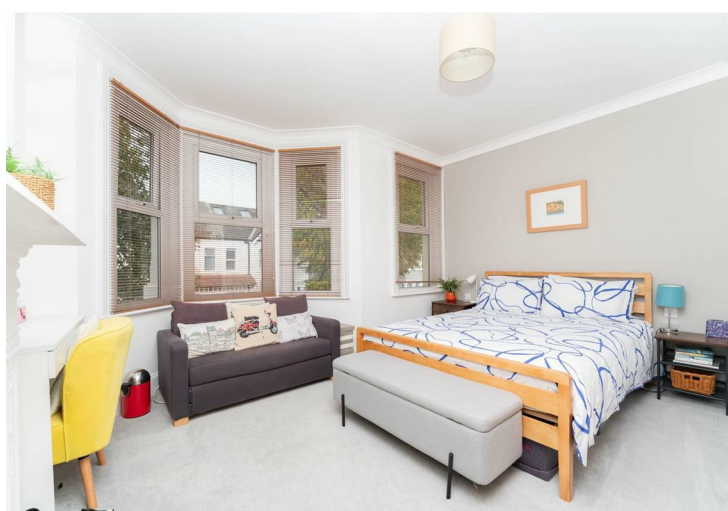
**Freehold / House - End Terrace**

**Elthorne Park Road**

**£865,000**

A fabulous four bedroom, two bathroom house that has been tastefully extended and modernised by the current owners with a beautifully landscaped South facing garden.

- Four bedrooms + two bathrooms
- Landscaped South facing garden
- Fully fitted kitchen
- Excellent local schools
- Good transport links
- Moments from Elthorne Park
- Part underfloor heating
- Beautifully presented throughout



**Freehold / House - End Terrace**

# Elthorne Park Road, W7 2JA

## £865,000

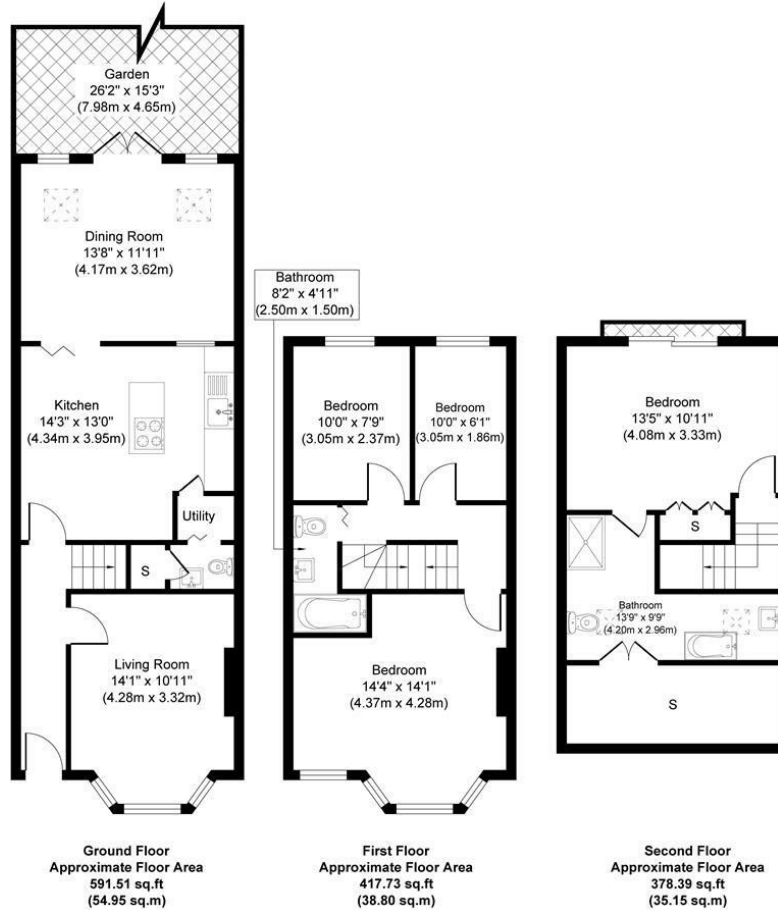
This well presented, fully extended family house has been much improved by the current owners whilst retaining many period details.

The ground floor features a front reception room with a period fireplace, built in storage units with shelving above, a modern fitted kitchen with an abundance of fitted units, a second reception room with doors leading to the very pretty South facing landscaped garden and a very useful cloakroom. On the first floor there are three bedrooms and a smart family bathroom. A super loft conversion houses the master bedroom with a four piece ensuite bathroom along with storage space.

Elthorne Park Road is a tree lined residential street moments from the gates of Elthorne Park. a large expanse of parkland and country walks. The shopping parades at Northfields and West Ealing are within easy reach, along with the Piccadilly Line at Northfields and Boston Manor and the Elizabeth Line at West Ealing. In the catchment area for Fielding Primary and Elthorne Park High schools.



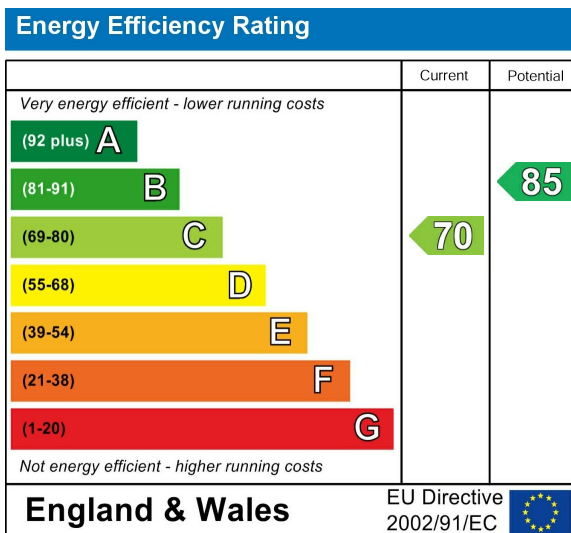
46 Elthorne Park Road, London W7 2JA



Approximate Gross Internal Floor Area 1387.64 sq. ft / 128.91 sq. m

Illustration for identification purposes only, measurements are approximate, not to scale.  
produced by jcphotographystudio.com

Energy Performance Graph



Call us on

020 8840 5151

northfieldsales@sintonandrews.co.uk

www.sintonandrews.co.uk

Agents Note: Whilst every care has been taken to prepare these particulars, they are for guidance purposes only. All measurements are approximate and are for general guidance purposes only and whilst every care has been taken to ensure their accuracy, they should not be relied upon and potential buyers are advised to recheck the measurements.