

# 28 Edenbridge Road

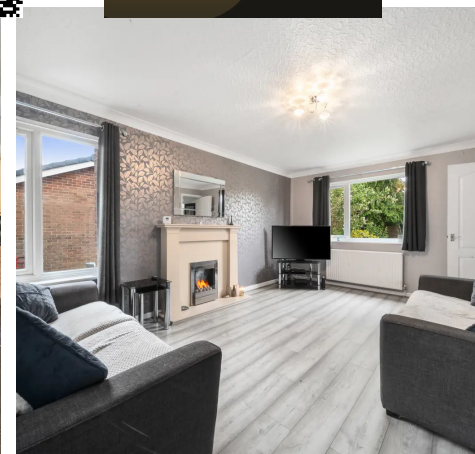
Cheadle Hulme, Cheadle

**£450,000**

Council Tax band: D

Tenure: Freehold

- Four Bedroom Detached Home
- Lovely Sized Plot
- Detached Double Garage
- Living Room & Open Plan Dining Kitchen
- WC & Sun Room
- Four Good Sized Bedrooms
- Bathroom
- Private Rear Garden
- Driveway Parking
- Freehold

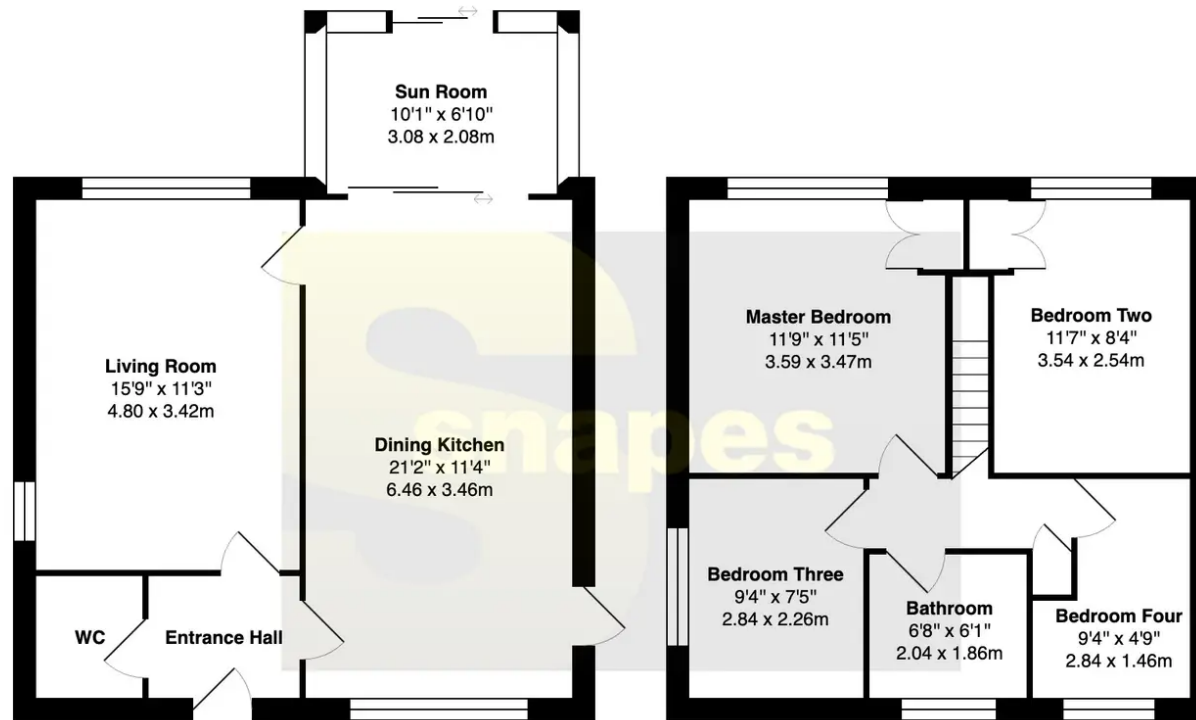












**Total Approximate Area - 1005 SqF / 93.4 SqM**

All measurements are approximate.  
 The floorplan may not include chimney breasts or support ribs and/or very small recess areas.  
 If a total floor area is quoted, this will include ALL areas shown on the plan, inc garages.  
 The area is calculated by the software and is approximate.

## Cheadle Hulme Office

Andrew Snape Estate Agents, 31 Station Road – SK8 5AF

0161 485 2244

[cheadlehulme@snapes.co.uk](mailto:cheadlehulme@snapes.co.uk)

[www.snapes.co.uk/](http://www.snapes.co.uk/)

