

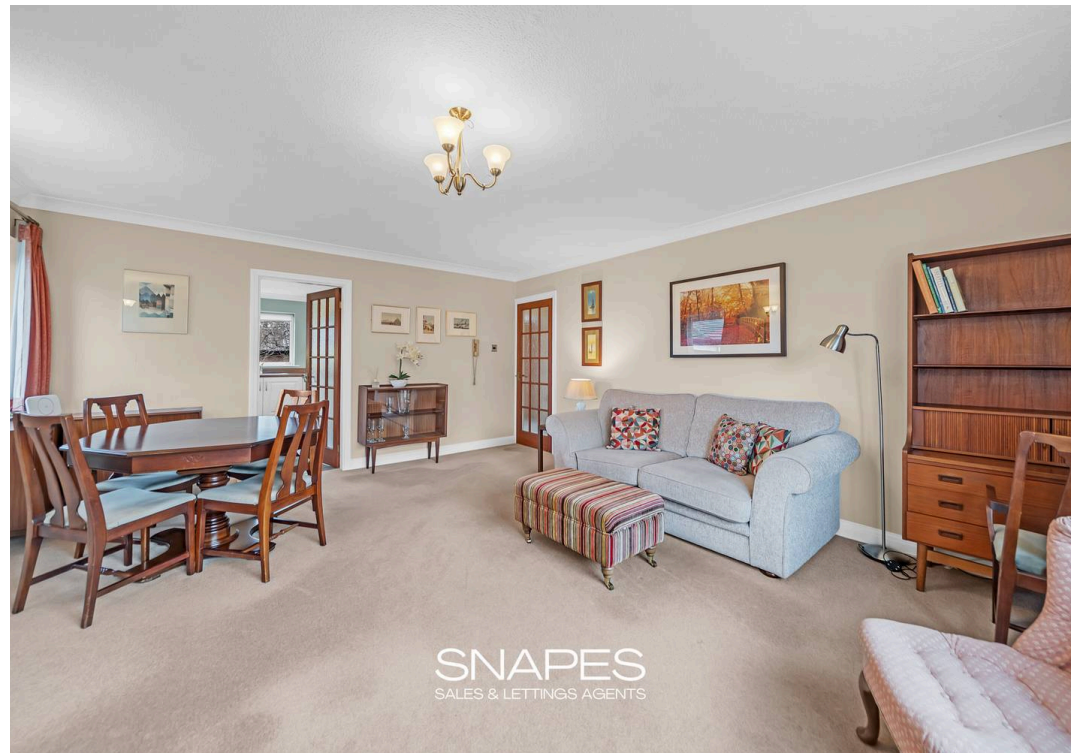


Hilltop Court Swann Lane, Cheadle Hulme, SK8 7HR  
£265,000

SNAPES  
SALES & LETTINGS AGENTS









# 8 Hilltop Court Swann Lane

Cheadle Hulme, Cheadle

Council Tax band: D

Tenure: Leasehold

EPC Energy Efficiency Rating: C

EPC Environmental Impact Rating: C

- No Onward Chain
- First Floor Apartment
- Large Living Room/Dining Room
- Modern Kitchen
- Two Good Sized Double Bedrooms
- Modern Bathroom & Ensuite
- Highly Sought After Location On Swann Lane
- Conservation Area
- Ready To Move Straight Into





**Entrance Hallway**

**Living Room**

14' 10" x 17' 0" (4.53m x 5.18m)

**Kitchen**

9' 11" x 13' 6" (3.02m x 4.12m)

**Master Bedroom**

10' 11" x 18' 4" (3.32m x 5.60m)

**Ensuite**

5' 11" x 5' 11" (1.81m x 1.81m)

**Bathroom**

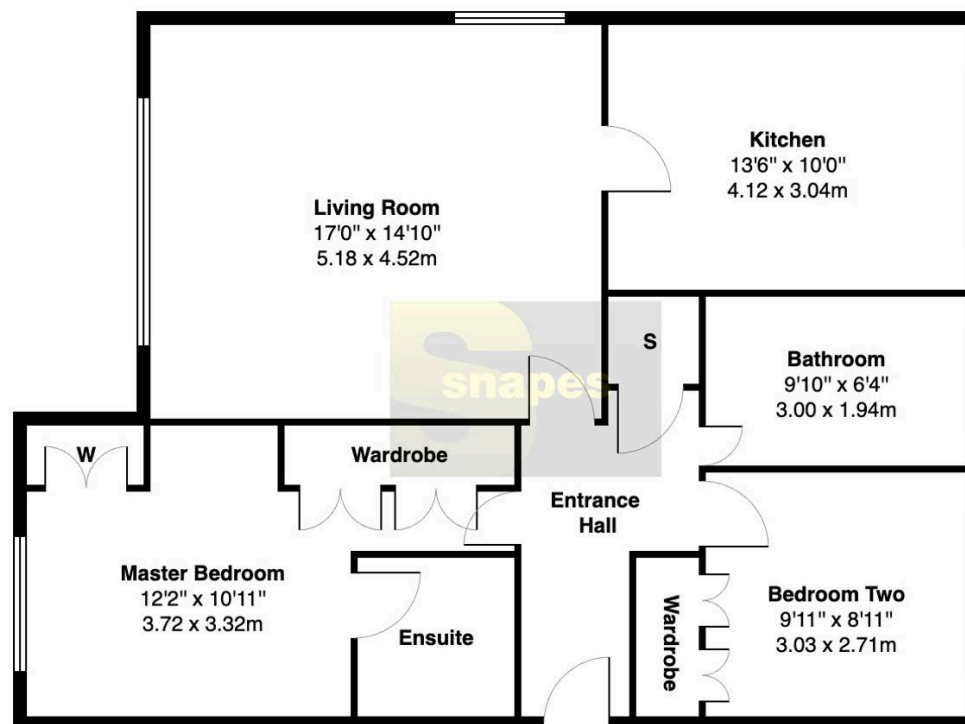
6' 4" x 9' 11" (1.94m x 3.01m)

**Bedroom Two**

8' 11" x 9' 11" (2.71m x 3.03m)







8, Hill Top Court, Cheadle Hulme, Cheadle, SK8 7HR

Approximate Total Area: 853 ft<sup>2</sup> ... 79.2 m<sup>2</sup>

All measurements are approximate.  
The floorplan may not include chimney breasts or support nibs and/or very small recess areas.  
If a total floor area is quoted, this will include ALL areas shown on the plan, inc garages.  
The area is calculated by the software and is approximate.

## Cheadle Hulme Office

Andrew Snape Estate Agents, 31 Station Road – SK8 5AF

0161 485 2244 • [cheadlehulme@snapes.co.uk](mailto:cheadlehulme@snapes.co.uk) • [www.snapes.co.uk/](http://www.snapes.co.uk/)