

Lynton Park Road

Cheadle Hulme, Cheadle

£1,395,000

WATCH THE VIDEO TOUR. An absolutely STUNNING FIVE DOUBLE BEDROOM, FIVE BATHROOM, FOUR RECEPTION ROOM detached residence on 0.4 ACRES with accommodation across THREE levels spanning 3500sqft.

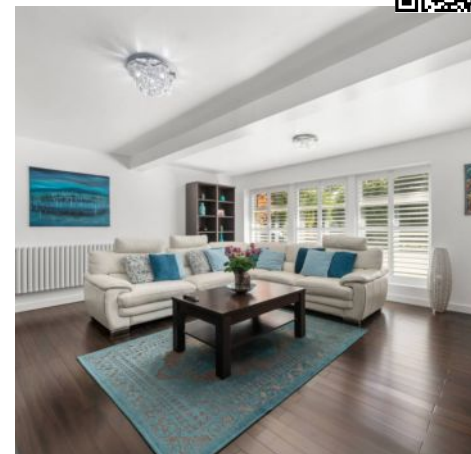
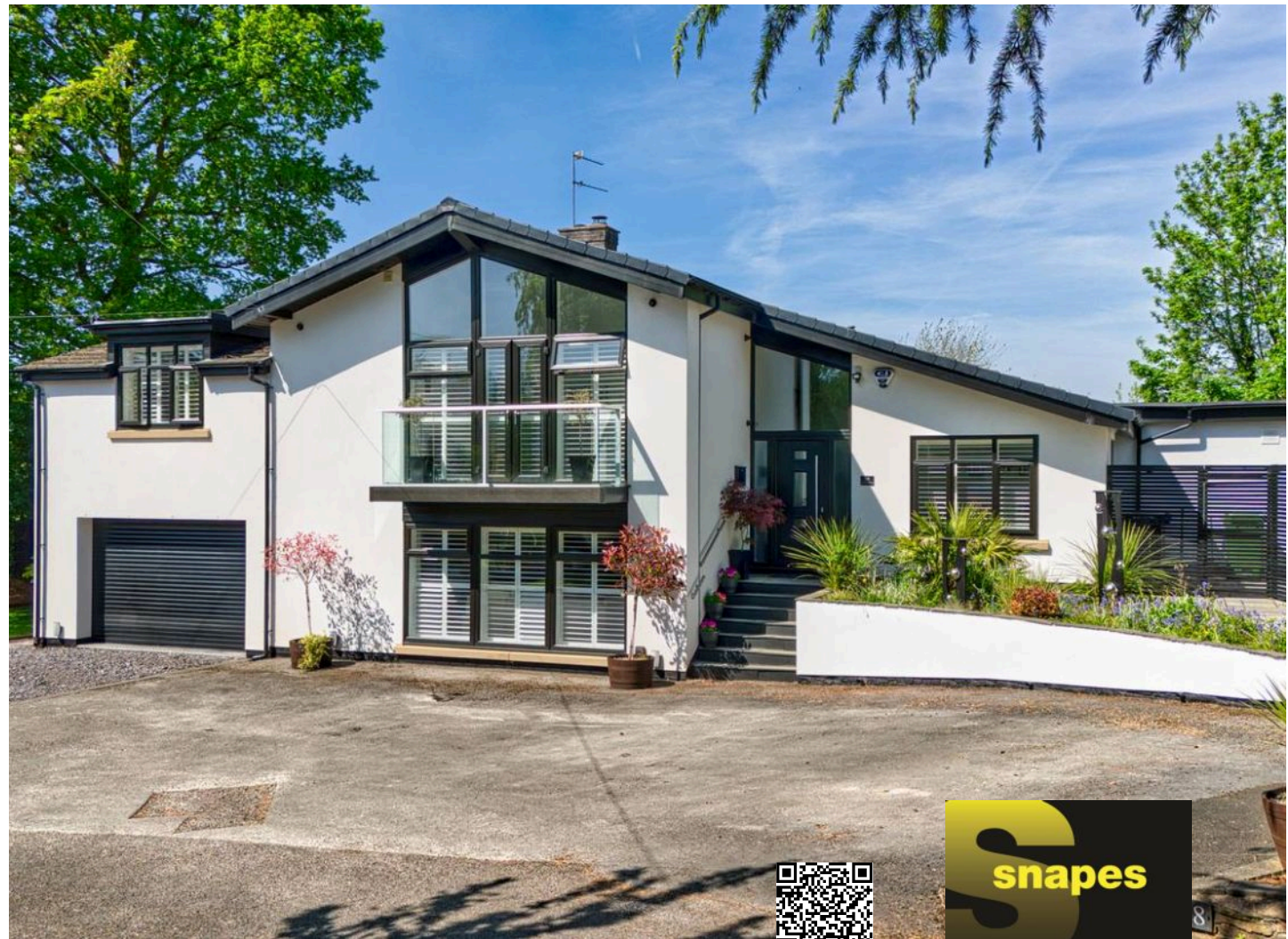
Council Tax band: E

Tenure: Freehold

EPC Energy Efficiency Rating: C

EPC Environmental Impact Rating: D

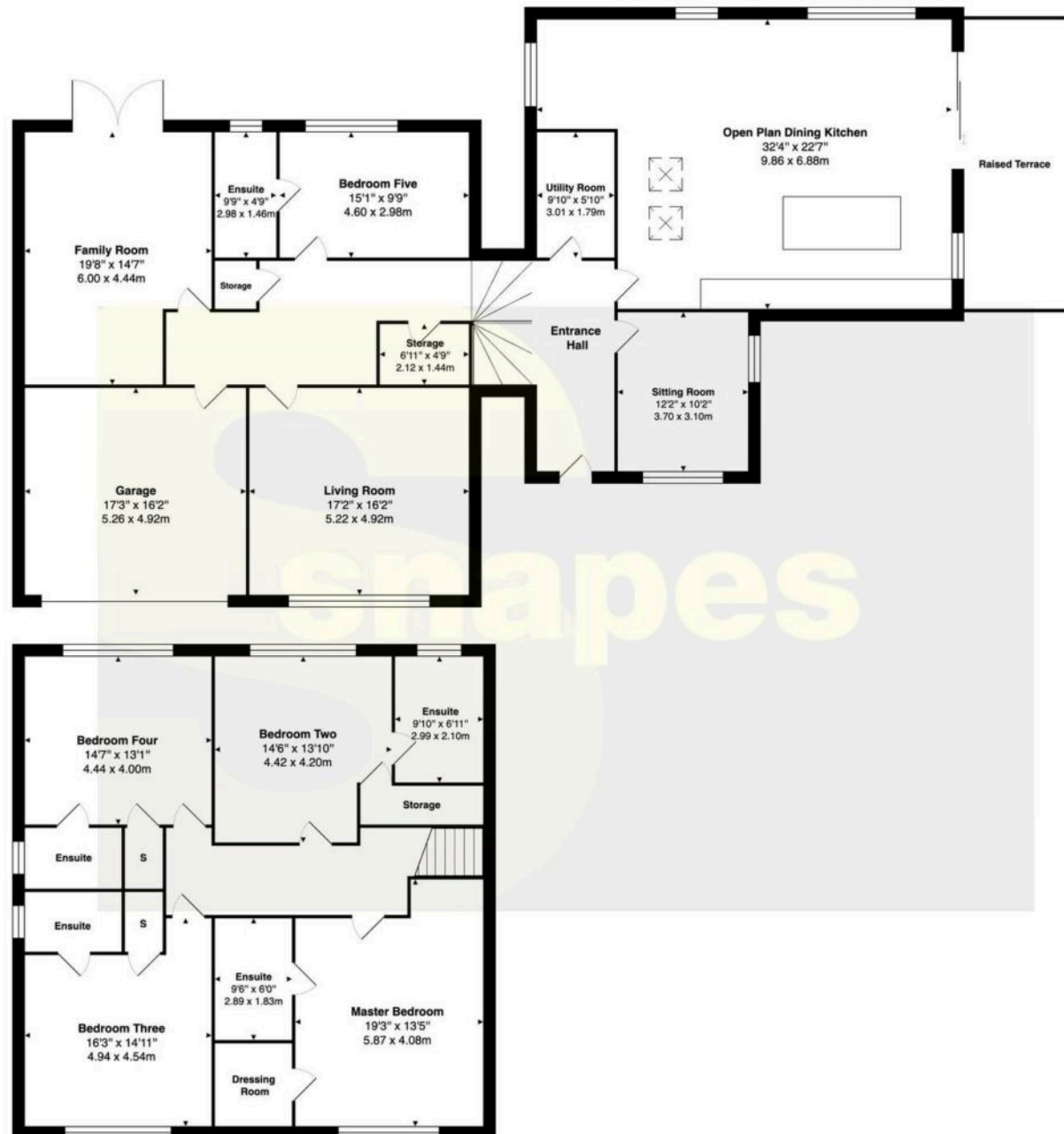
- Absolutely Stunning Five Double Bedroom Detached Family Home Across Three Levels
- Over 3,500sqft Of Living Accommodation Situated on Over 0.4 Acres
- Five Double Bedrooms, Five Bathrooms & Four Reception Rooms
- Fabulous Stylish Open Plan Dining Kitchen Measuring In Excess of 32ft Leading Out To A Raised Terrace Areas
- Utility Room & Integral Garage
- Superb Landscaped & Private Gardens To The Rear Creating An Idyllic Paradise
- Fabulous Frontage Offering Driveway Parking For Multiple Vehicles
- Freehold
- Situated On One Of Cheadle Hulme's Most Sought After Roads
- Catchment For Cheadle Hulme School





Lynton Park Road, Cheadle Hulme, Cheadle, SK8

Total Approximate Area - 3551 SQFT / 329.9 SQM













Cheadle Hulme Office

Andrew Snape Estate Agents, 31 Station Road – SK8 5AF

0161 485 2244

cheadlehulme@snapes.co.uk

www.snapes.co.uk/

