

Newhaven Close

Cheadle Hulme, Cheadle

£689,950

WATCH THE VIDEO TOUR! This is a MODERNISED FOUR bedroom DETACHED home with a living room, FABULOUS open plan dining kitchen, wc, utility room, FOUR bedrooms, TWO bath/shower rooms and a garage.

Council Tax band: G

Tenure: Leasehold

- Well Presented & Modernised Four Bedroom Detached
- Lovely Sized Private Rear Garden
- Highly Sought After Cul-De-Sac Located Off Ramillies Avenue
- Entrance Hallway, WC & Utility Room
- Fabulous Modern Open Plan Dining Kitchen & Bay Fronted Living Room
- Four Good Sized Bedrooms & Two Bath/Shower Rooms Including Ensuite
- Catchment Area For Both Lane End Primary School & Cheadle Hulme High School

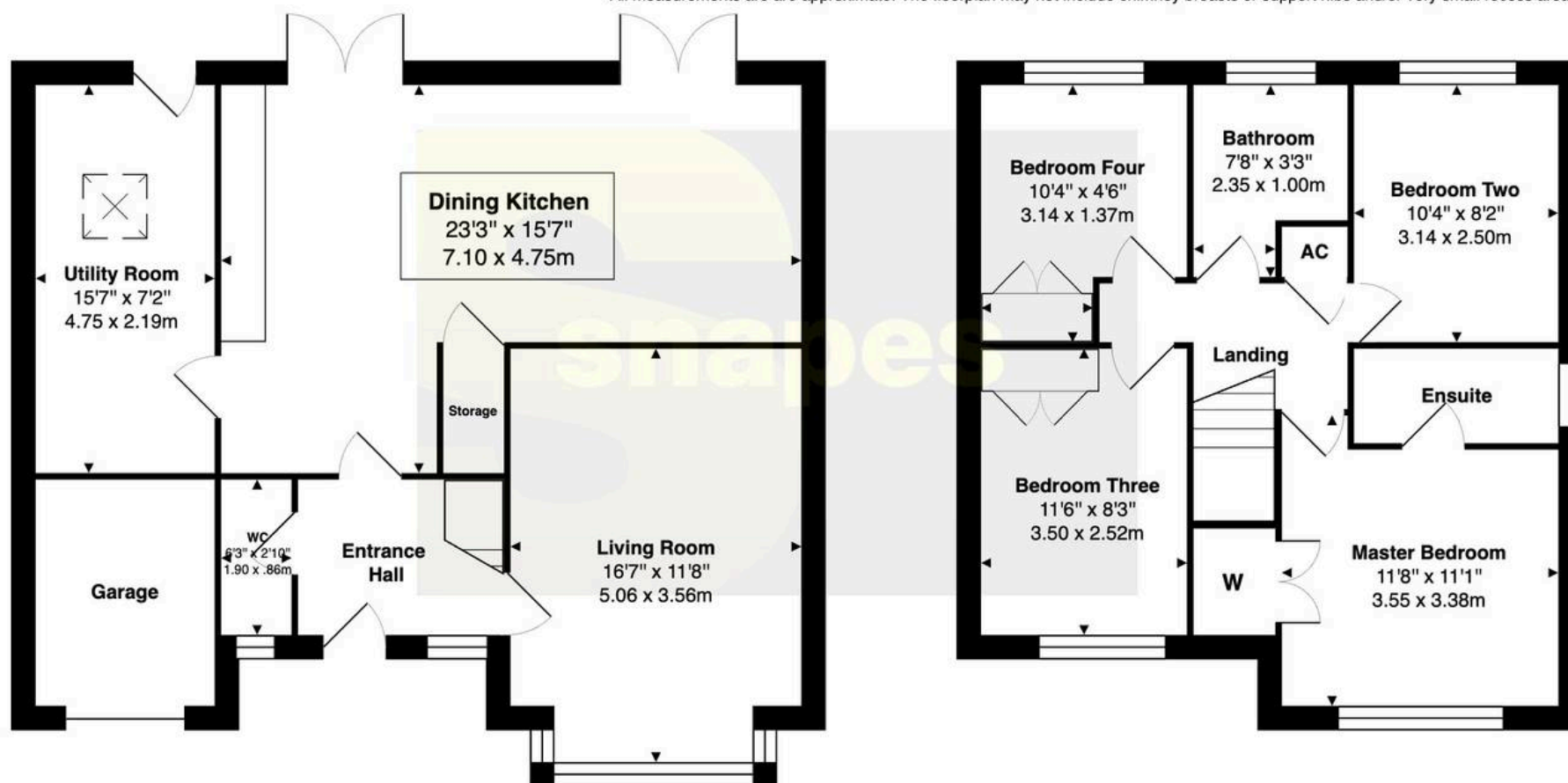




Newhaven Close, Cheadle Hulme, SK8

Total Approximate Area - 1293 SQFT / 120.1 SQM

All measurements are approximate. The floorplan may not include chimney breasts or support nibs and/or very small recess areas.







Cheadle Hulme Office

Andrew Snape Estate Agents, 31 Station Road – SK8 5AF

0161 485 2244

cheadlehulme@snapes.co.uk

www.snapes.co.uk/

