

# Woking Road

Cheadle Hulme, Cheadle

**£485,000**

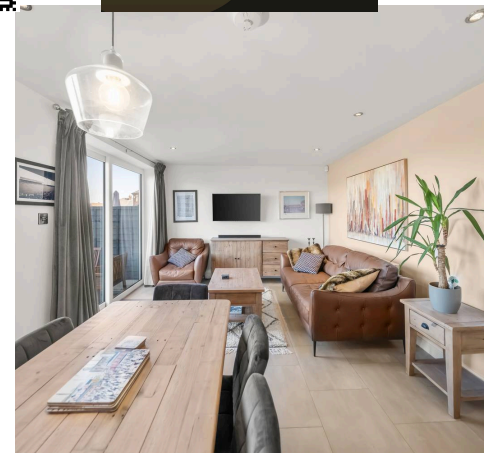
Council Tax band: C

Tenure: Freehold

EPC Energy Efficiency Rating: D

EPC Environmental Impact Rating: D

- Immaculately Presented & Modernised Four Bedroom Semi Detached
- Lovely Views & Open Aspect Over Rear Fields
- Entrance Hallway, WC & Utility Room
- Living Room & Stylish Open Plan Dining Kitchen
- Integral Garage
- Four Bedrooms
- Modern Bathroom & Shower Room
- Private Landscaped Rear Garden
- Catchment For Thorn Grove Primary School & Cheadle Hulme High School
- Freehold

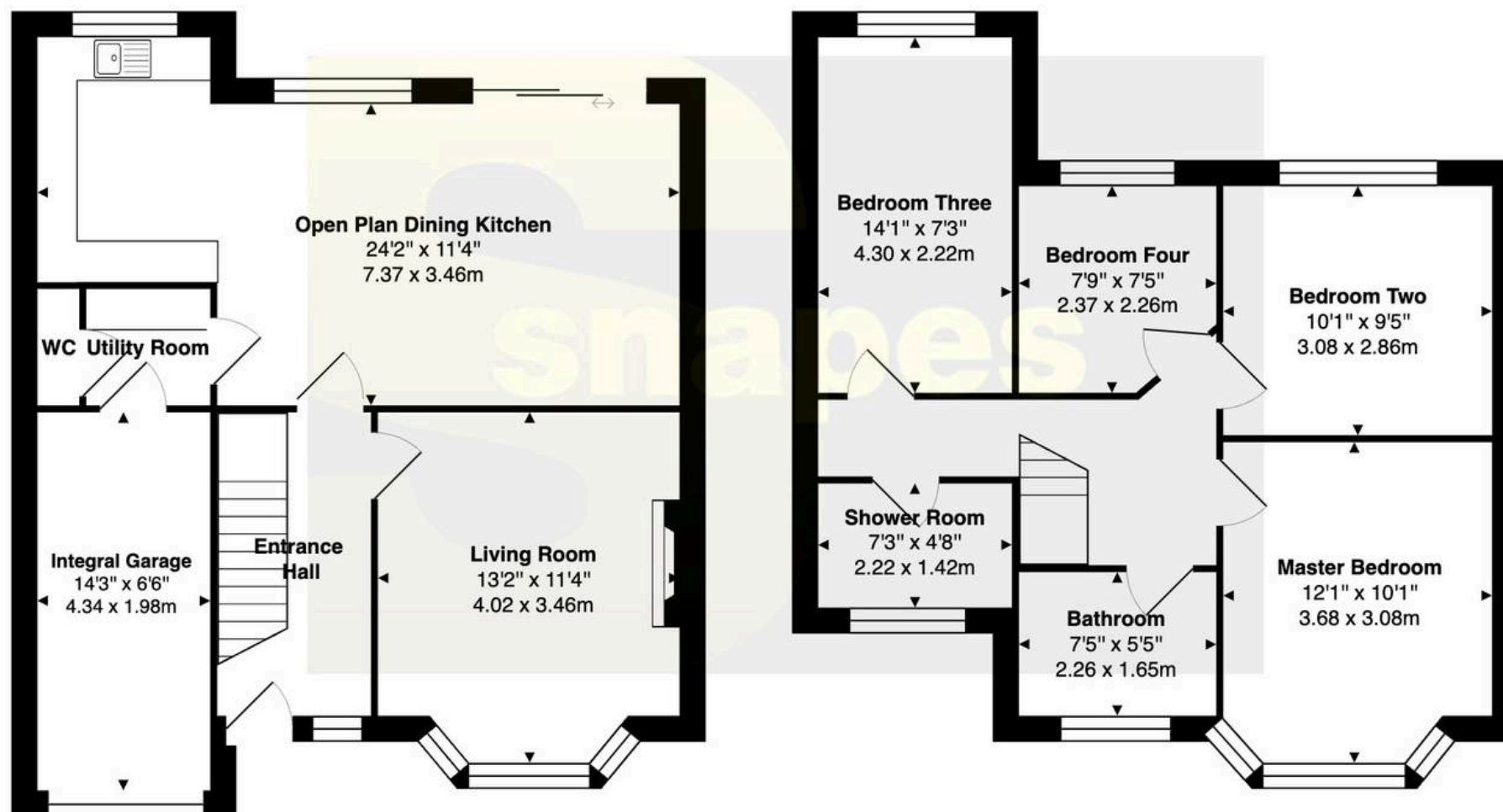




**Woking Road, Cheadle Hulme, SK8**

**Total Approximate Area - 1127 SQFT / 104.7 SQM**

All measurements are approximate. The floorplan may not include chimney breasts or support nibs and/or very small recess areas.











## Cheadle Hulme Office

Andrew Snape Estate Agents, 31 Station Road – SK8 5AF

0161 485 2244

[cheadlehulme@snapes.co.uk](mailto:cheadlehulme@snapes.co.uk)

[www.snapes.co.uk/](http://www.snapes.co.uk/)

